

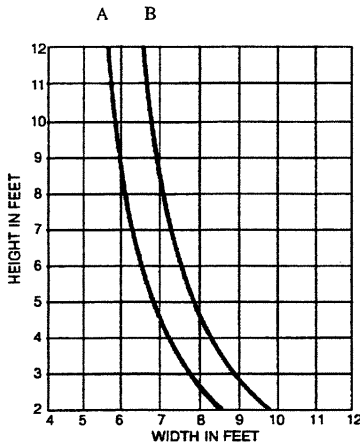
6600 wall

DEADLOAD CHARTS

Horizontal or deadload limitations are based upon the maximum allowable deflection (as listed) at the center of an intermediate horizontal member. Calculations are based on 1" (1.00) insulated glass setting on two setting blocks positioned as listed.

A = .125 Deflection w/Setting
Blocks @ 1/4 Pts.

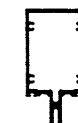
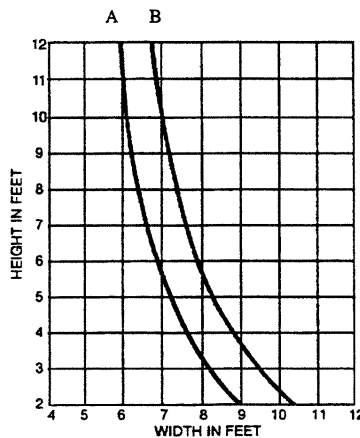
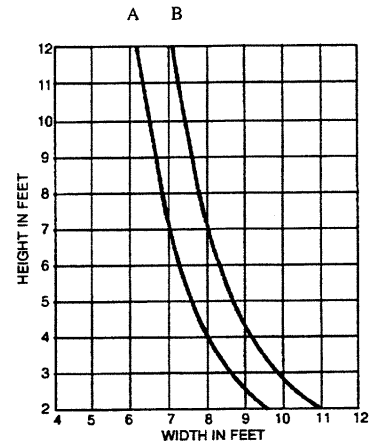
B = .125 Deflection w/Setting
Blocks @ 1/8 Pts.



66-003



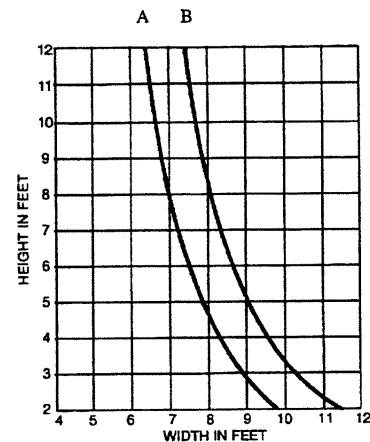
66-007



66-002



66-004



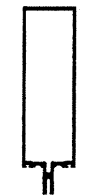
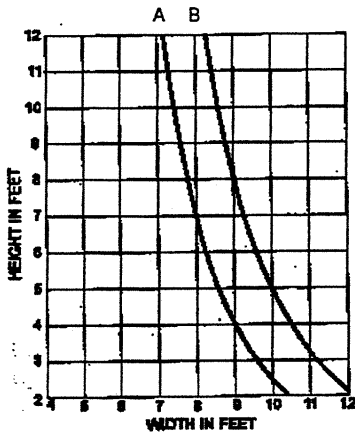
6600 wall

DEADLOAD CHARTS

Horizontal or deadload limitations are based upon the maximum allowable deflection (as listed) at the center of an intermediate horizontal member. Calculations are based on 1" (1.00) insulated glass setting on two setting blocks positioned as listed.

A = .125 Deflection w/Setting
Blocks @ 1/4 Pts.

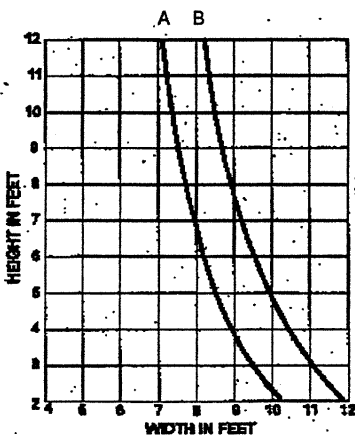
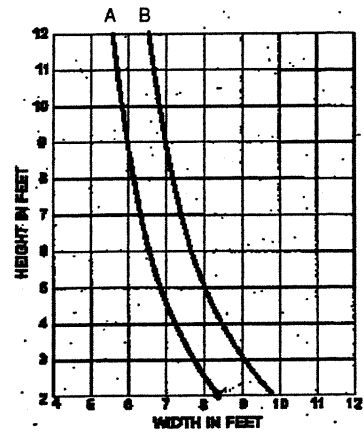
B = .125 Deflection w/Setting
Blocks @ 1/8 Pts.



66-048



66-005



66-049



66-040

