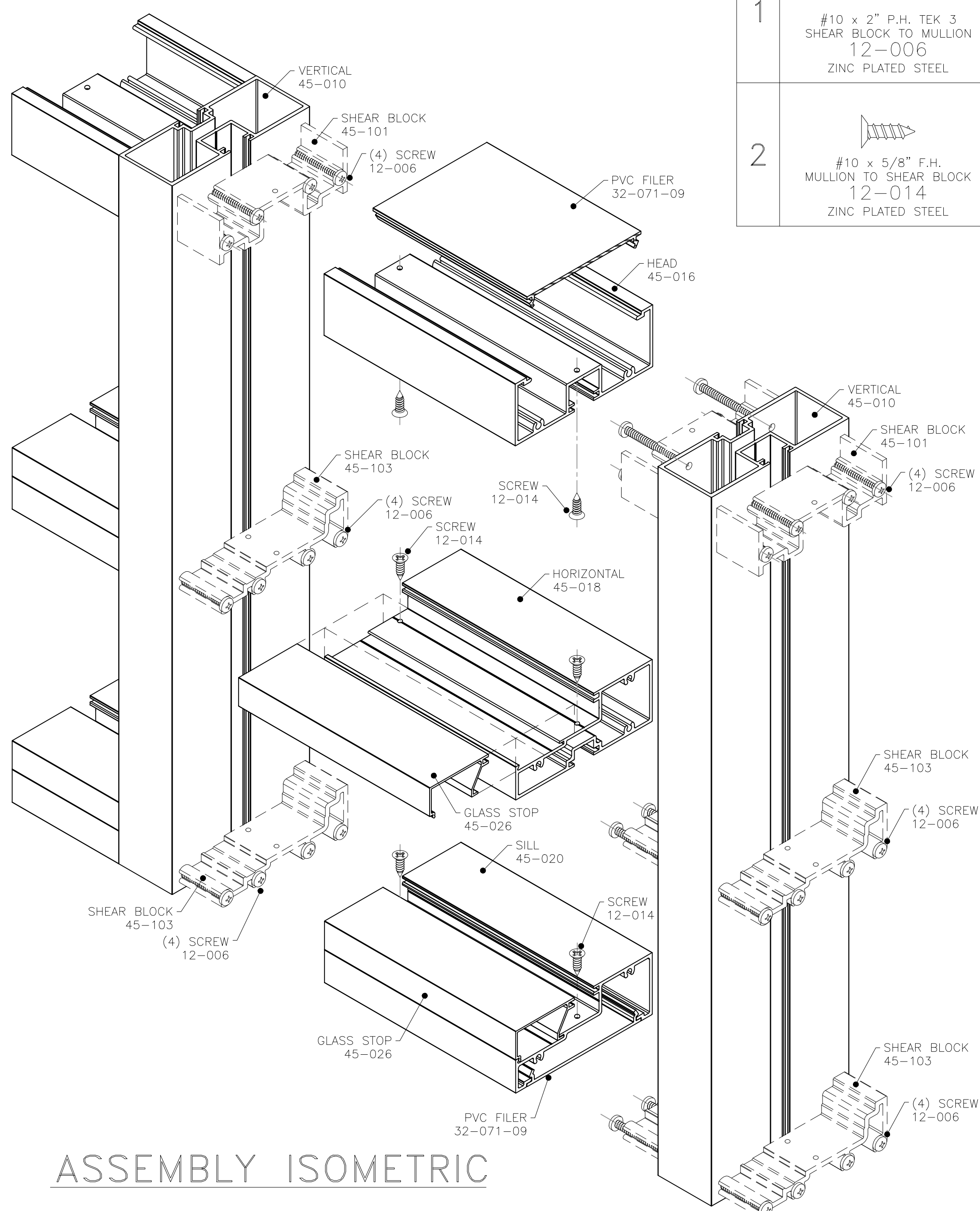
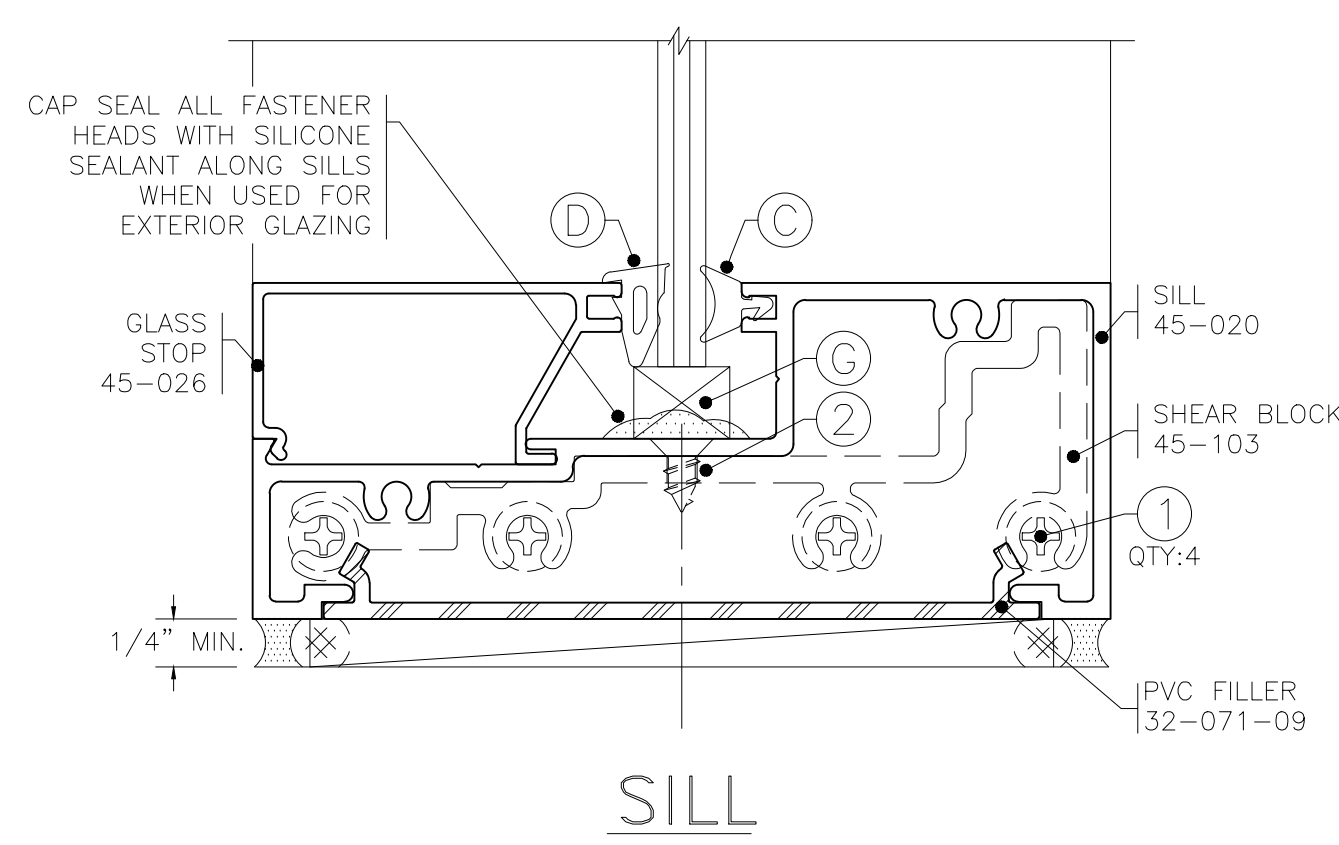
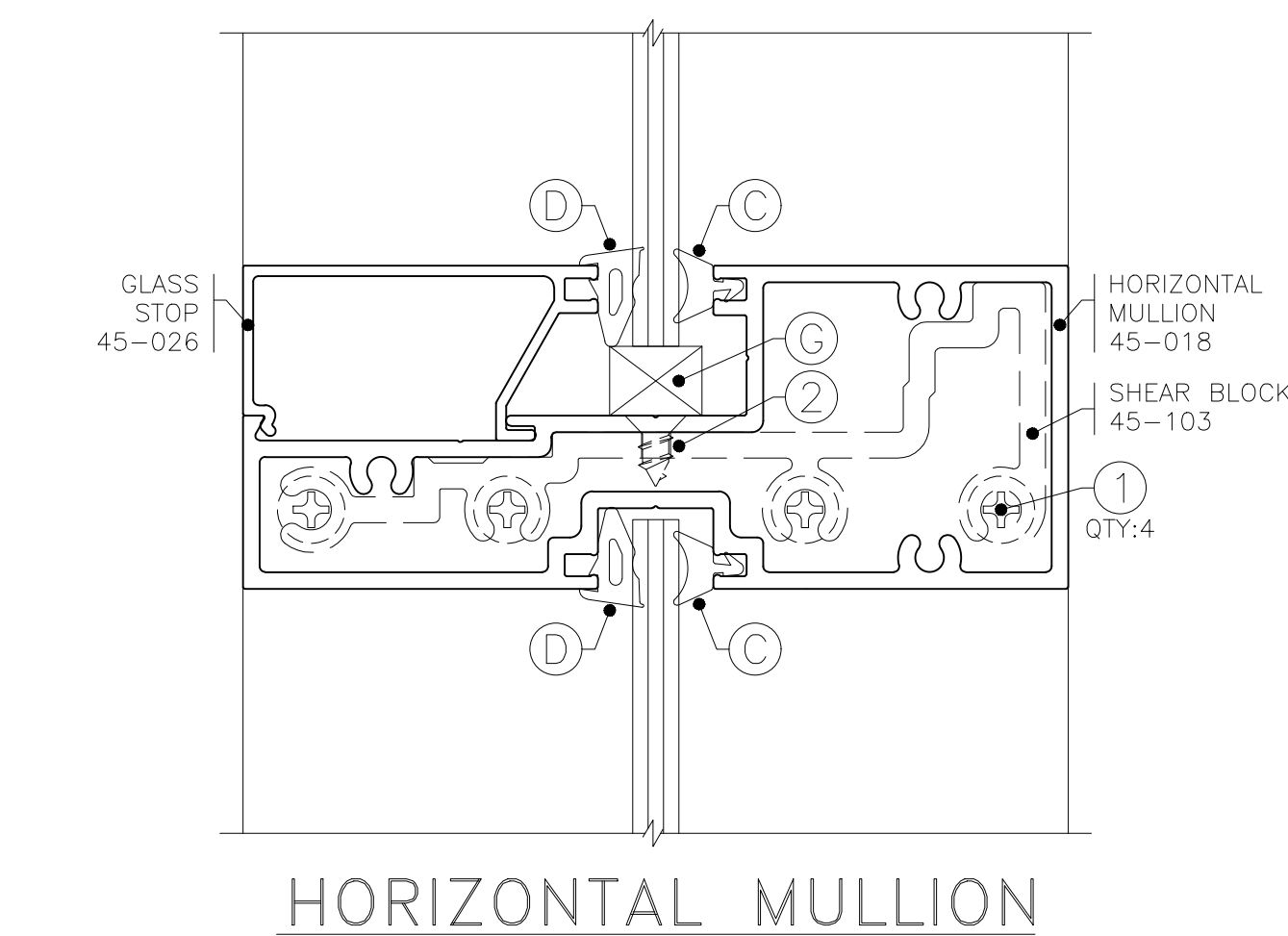
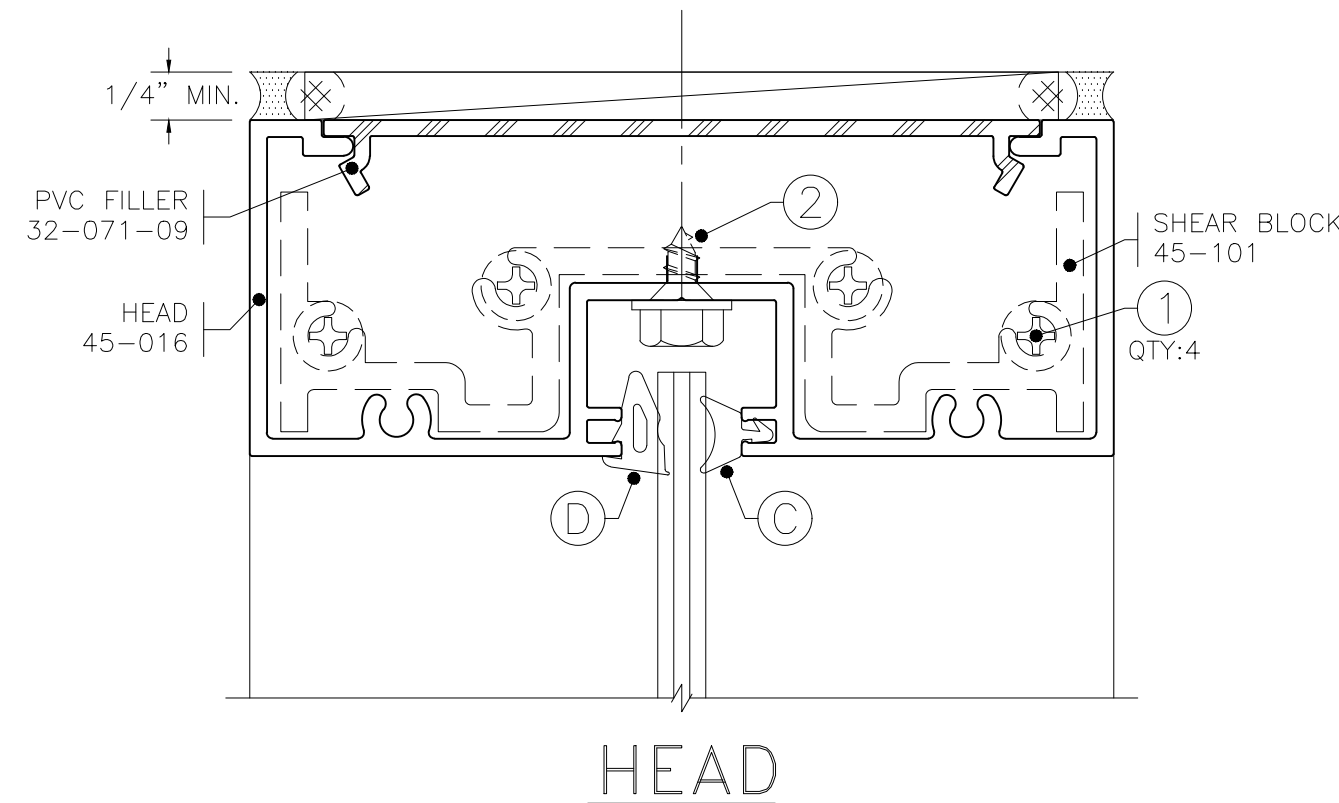
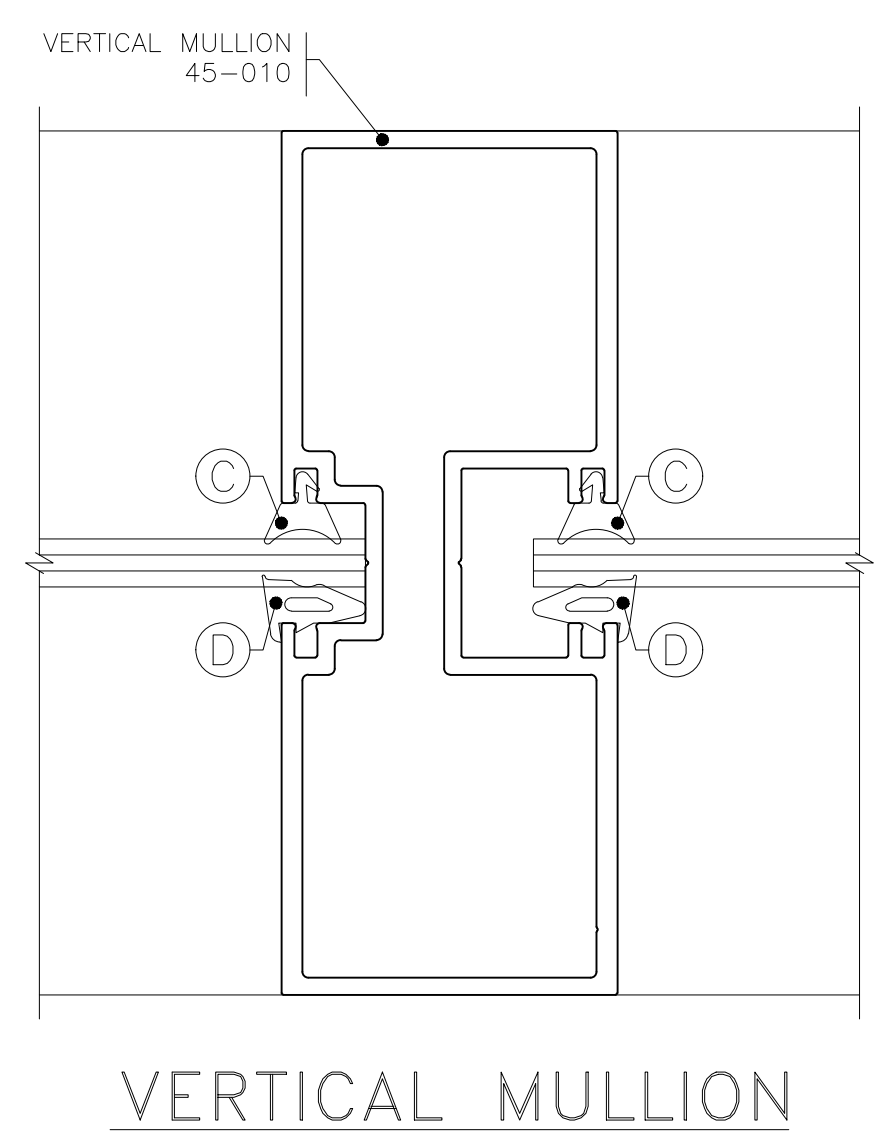
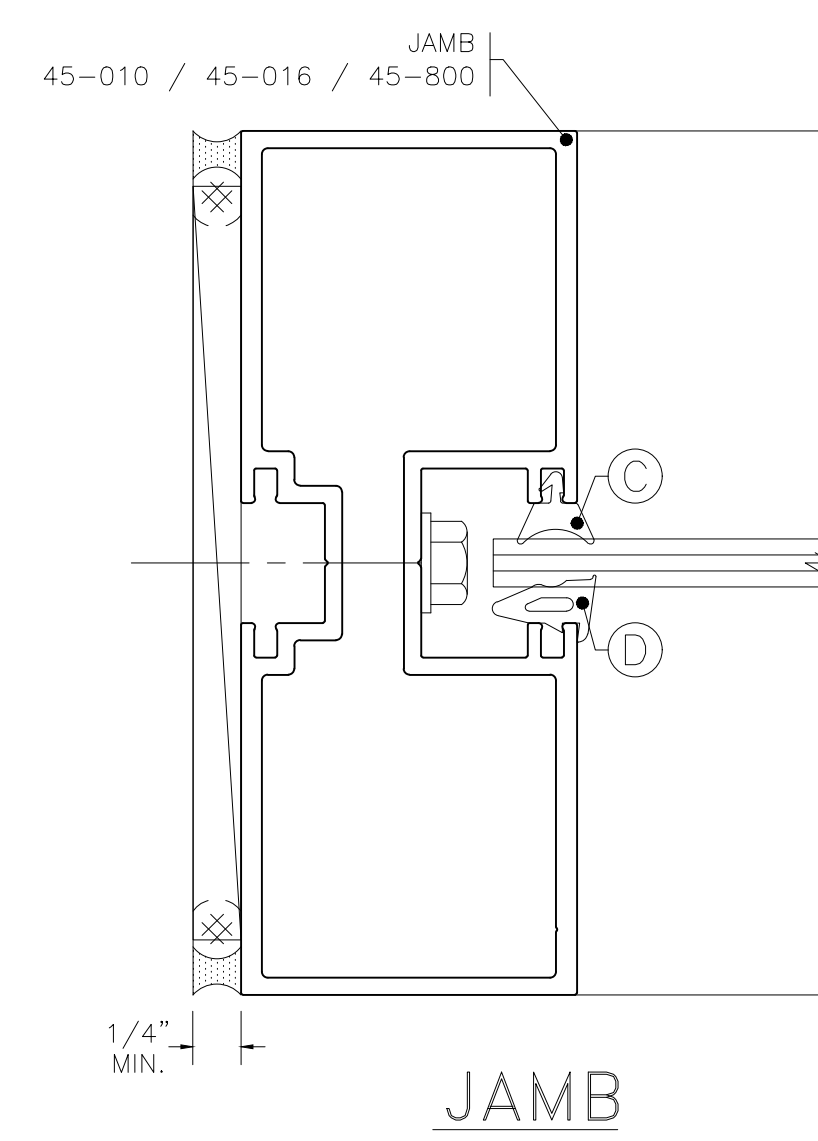


450FG FRAMING ASSEMBLY
SHEAR BLOCK SYSTEM



FASTENERS		GASKETS			
1	#10 x 2" P.H. TEK 3 SHEAR BLOCK TO MULLION 12-006 ZINC PLATED STEEL	A	LOCK IN 19-077 E.P.D.M.	E	ROLL IN 19-085 E.P.D.M.
2	#10 x 5/8" F.H. MULLION TO SHEAR BLOCK 12-014 ZINC PLATED STEEL	B	LOCK IN 19-053 E.P.D.M.	F	ROLL IN 19-014 E.P.D.M.
		C	LOCK IN 19-051 E.P.D.M.	G	3/8" - 1/2" & 3" SETTING BLOCK 19-501 NEOPRENE
		D	ROLL IN 19-040 E.P.D.M.	H	1/4" x 3/4" x 3" SETTING BLOCK 19-503 NEOPRENE

- GENERAL NOTES
- Building code laws vary by area. CMI Architectural Products does not interpret local codes for the appropriate selection of product configurations, hardware, and glazing materials and therefore assumes no responsibility. It is the responsibility of the owner, Architect, and installer to comply with all applicable building codes and laws.
 - All work shall be performed in accordance with CMI Architectural Products approved shop drawings and owner's project documents. Notify the manufacturer of any deviations or discrepancies.
 - All framing shall be erected plumb and true, in proper alignment and relation to established lines, grades, and elevations.
 - Materials stored on the job site shall be properly blocked and covered to allow adequate water run-off and protection from sustained moisture. Provide air ventilation at the bottom side of covered materials.
 - CMI Architectural Products recommends that all project documents be reviewed by our engineers and that shop drawings be developed by CMI. CMI requires one approved set of shop drawings prior to the start of all fabrication. Glazing contractors providing their own shop drawings shall assume full responsibility and liability for their own work.
 - Check the opening to allow a minimum 1/4" at jambs, head, and sill so that the frame may be properly plumbed and squared.
 - Apply sealant to the ends of all intersecting horizontal framing members prior to assembly (when frames are installed at building exteriors). Assemble frames by applying screws through the horizontal members into the pre-mounted shear blocks on the vertical members.
 - Install frame, properly shimming with non-corrosive or non-deteriorating shim material, to a plumb and square position. Use flat head, countersunk screws to fasten frame into the opening, through the glazing pocket. Apply a continuous perimeter bead of sealant at interior and exterior side of frame.
 - Install interior (lock-in) gasket prior to installing glass. Set glass lites, properly blocking at (max.) quarter point locations and install the glass stop extrusion. Glaze the exterior (roll-in) gasket properly to achieve tight, closed corners.
- Note: Per independent laboratory testing; CMI requires both interior and exterior perimeter frame sealant to meet specified performance.



CMI Architectural

HQ + MANUFACTURING
20621 HWY 25 N.
DESMET, SOUTH DAKOTA 57231
TOLL FREE: 800-324-2070
PHONE: (605) 854-3326
FAX: (605) 584-3620

SALES + ENGINEERING
1630 101ST AVE NE, SUITE 130
BLAINE, MN 55449
TOLL FREE: 800-334-1533
PHONE: (763) 560-5567
FAX: (763) 560-6399

MANUFACTURING
57135 WOODHOUSE DR.
DOWAGIAC, MI 49047
PHONE: (269) 782-0299

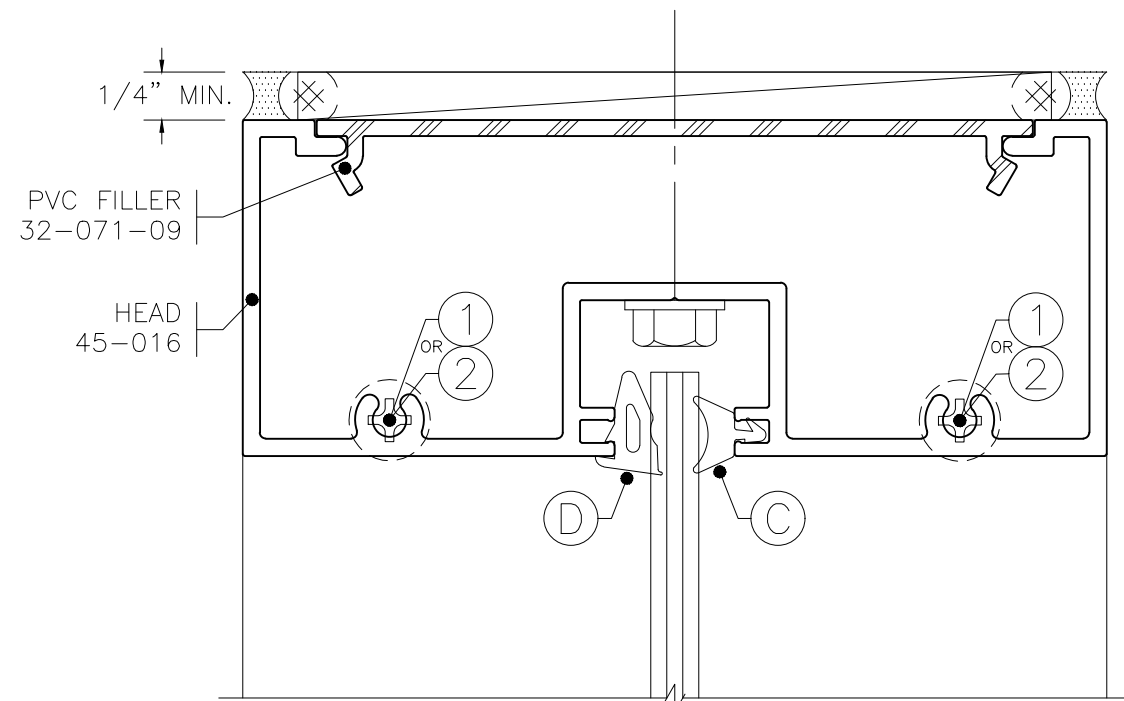
WWW.CMIARCH.COM

450FG FRAME ASSEMBLY
SHEAR BLOCK SYSTEM

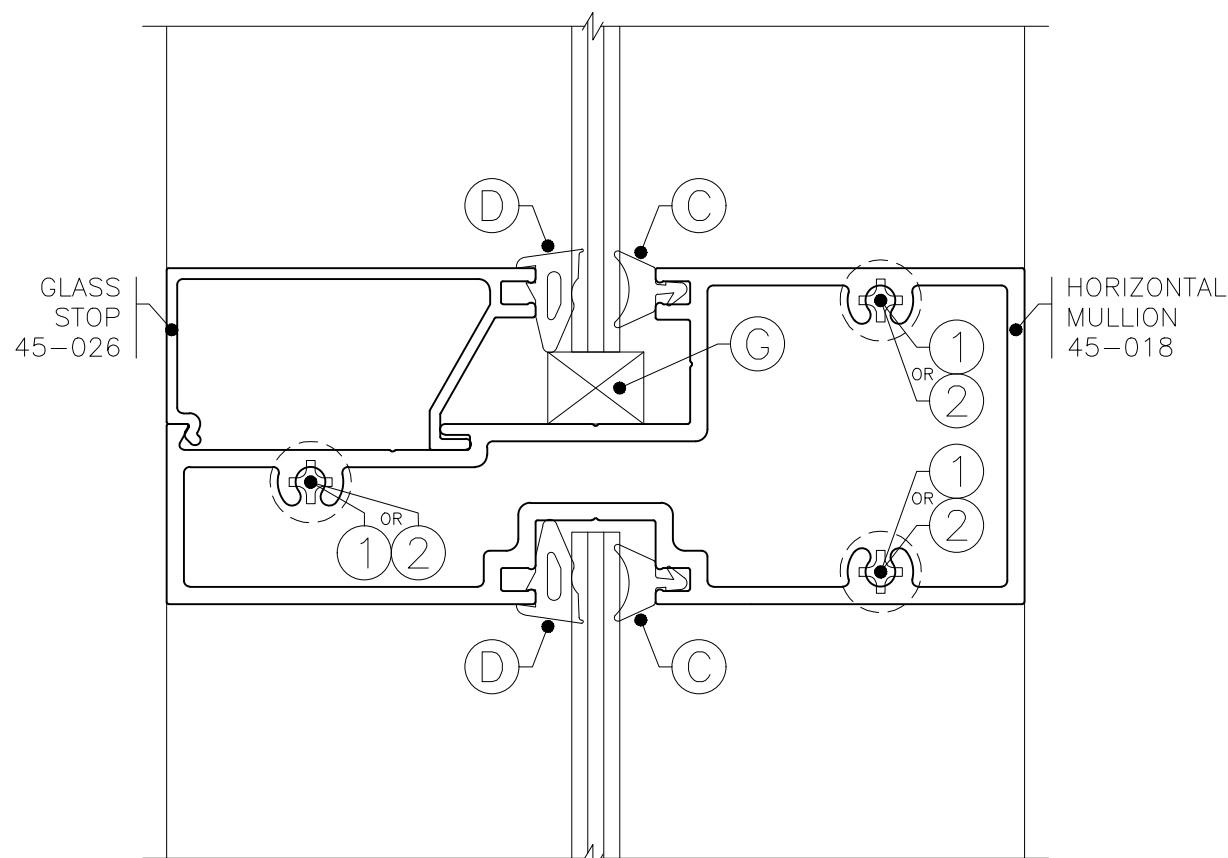
SHEET #:
450FG-SB

UPDATED: OCTOBER 12, 2022

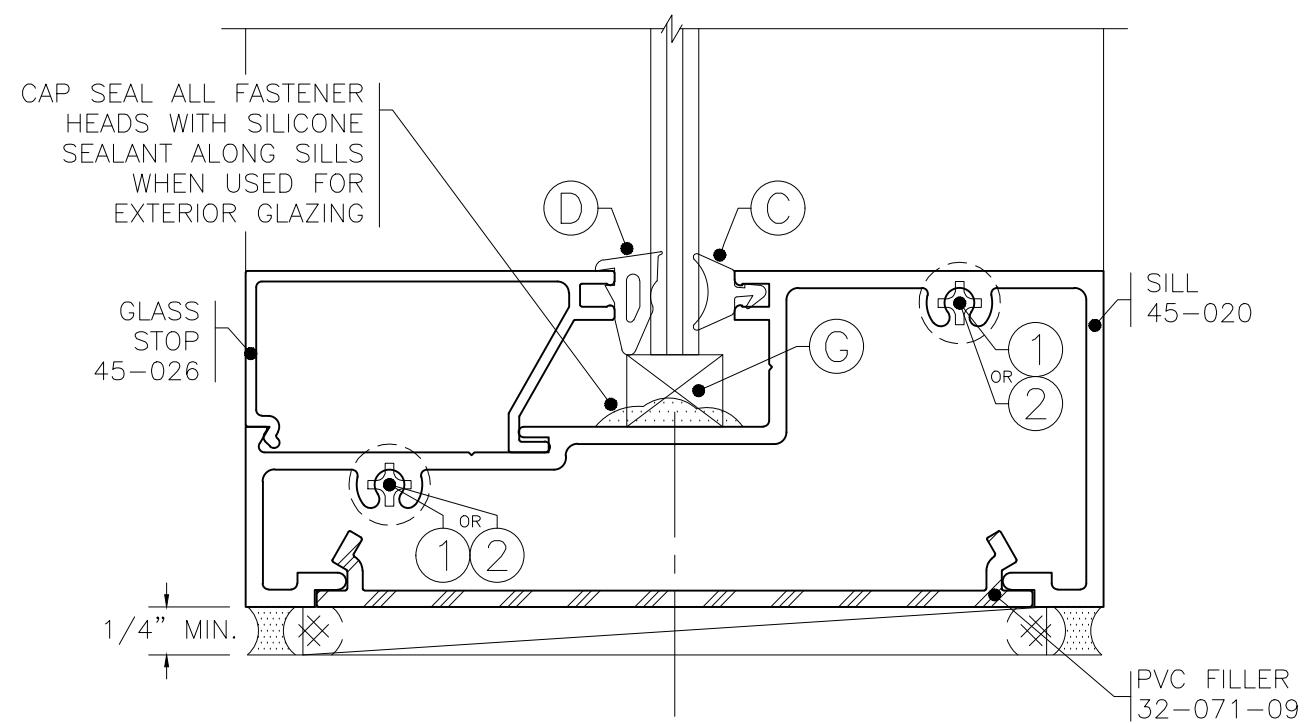
450FG WALL ASSEMBLY SCREW SPLINE ASSEMBLY



HEAD

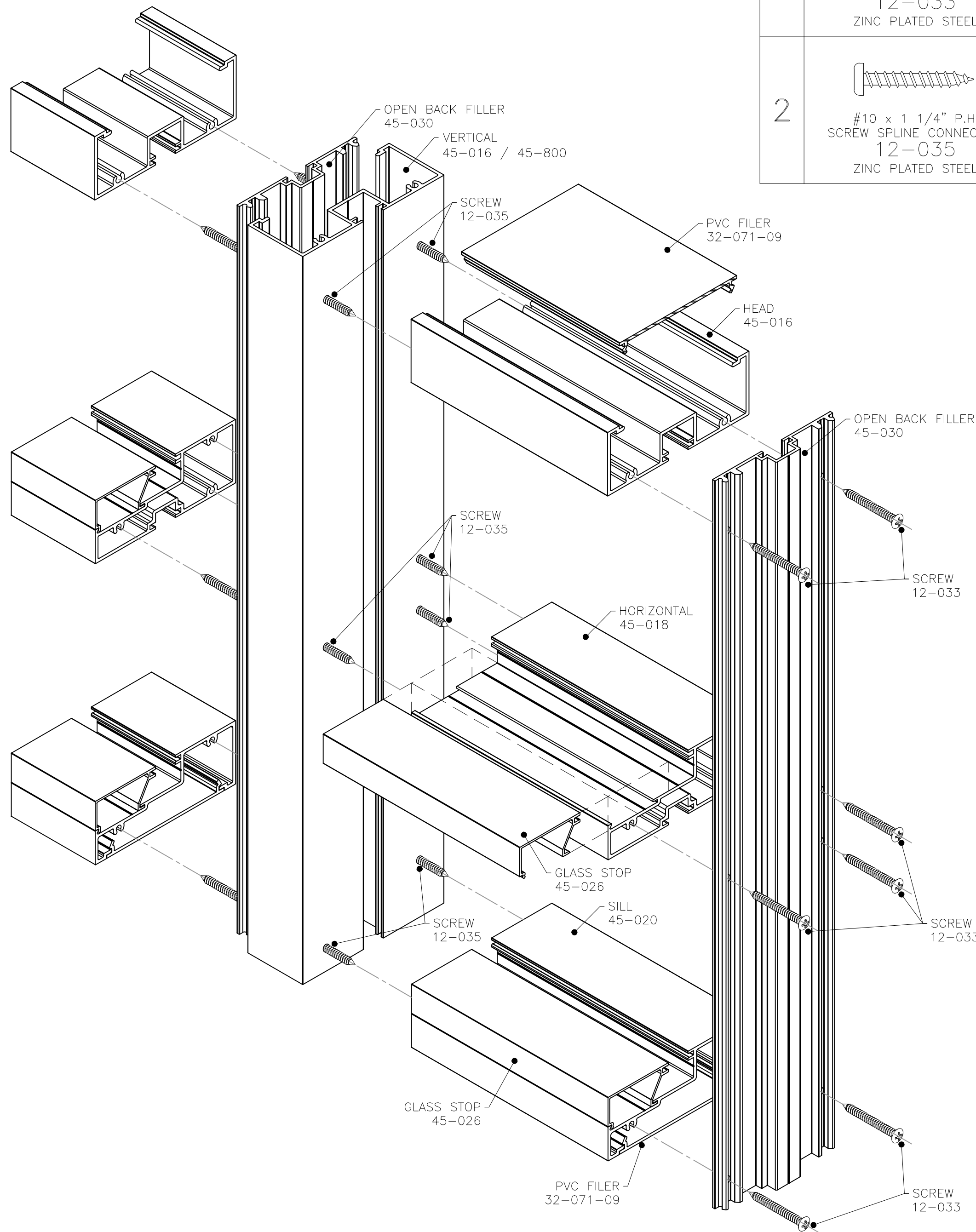


HORIZONTAL MULLION



SILL

NOTE: CONTINUOUS SUB-SILL
47-034 REQUIRED FOR EXTERIOR
INSTALLATIONS



ASSEMBLY ISOMETRIC

FASTENERS

1	 #10 x 1 3/4" O.H. SCREW SPLINE CONNECTION 12-033 ZINC PLATED STEEL
2	 #10 x 1 1/4" P.H. SCREW SPLINE CONNECTION 12-035 ZINC PLATED STEEL

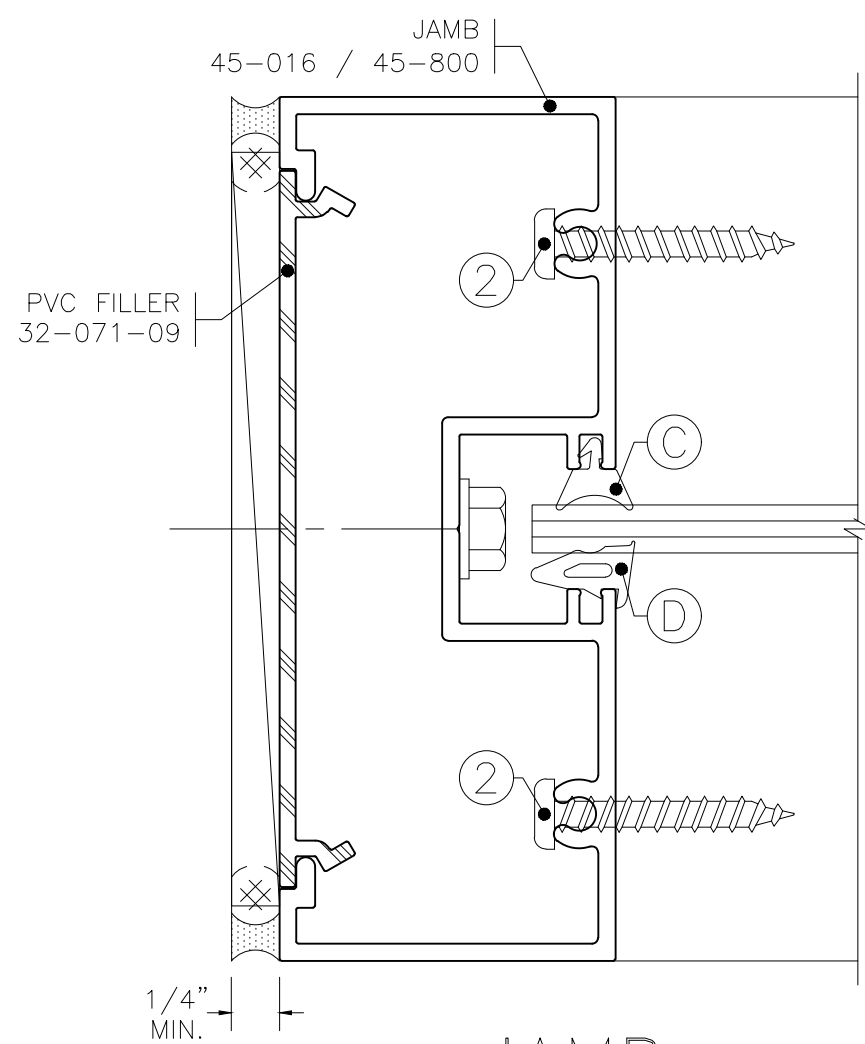
GASKETS

A	 LOCK IN 19-077 E.P.D.M.	E	 ROLL IN 19-085 E.P.D.M.
B	 LOCK IN 19-053 E.P.D.M.	F	 ROLL IN 19-014 E.P.D.M.
C	 LOCK IN 19-051 E.P.D.M.	G	 3/8" - 1/2" & 3" SETTING BLOCK 19-501 NEOPRENE
D	 ROLL IN 19-040 E.P.D.M.	H	 1/4" x 3/4" x 3" SETTING BLOCK 19-503 NEOPRENE

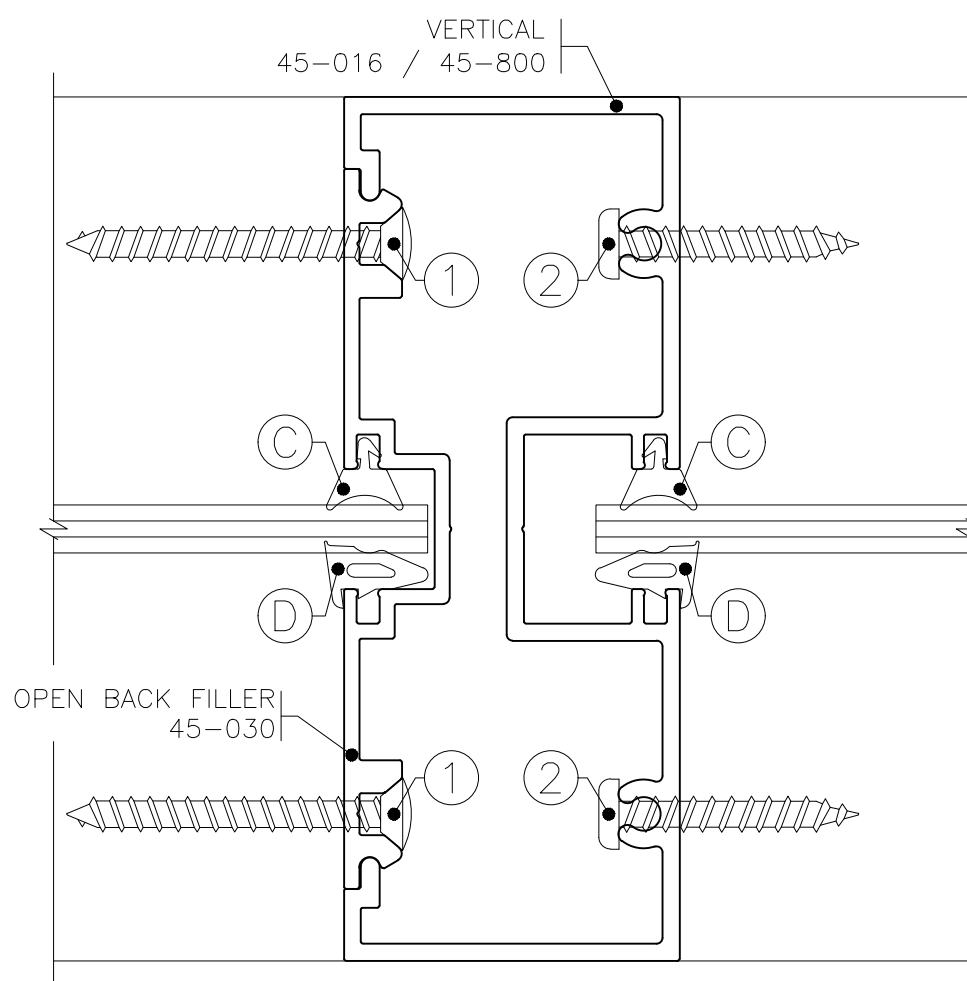
GENERAL NOTES

- Building code laws vary by area. CMI Architectural Products does not interpret local codes for the appropriate selection of product configurations, hardware, and glazing materials and therefore assumes no responsibility. It is the responsibility of the owner, Architect, and installer to comply with all applicable building codes and laws.
- All work shall be performed in accordance with CMI Architectural Products approved shop drawings and owner's project documents. Notify the manufacturer of any deviations or discrepancies.
- All framing shall be erected plumb and true, in proper alignment and relation to established lines, grades, and elevations.
- Materials stored on the job site shall be properly blocked and covered to allow adequate water run-off and protection from sustained moisture. Provide air ventilation at the bottom side of covered materials.
- CMI Architectural Products recommends that all project documents be reviewed by our engineers and that shop drawings be developed by CMI. CMI requires one approved set of shop drawings prior to the start of all fabrication. Glazing contractors providing their own shop drawings shall assume full responsibility and liability for their own work.
- Check the opening to allow a minimum 1/4" at jambs, head, and sill so that the frame may be properly plumbed and squared.
- Apply sealant to the ends of all intersecting horizontal framing members prior to assembly (when frames are installed at building exteriors). Assemble frames by applying screws through the horizontal members into the pre-mounted shear blocks on the vertical members.
- Install frame, properly shimming with non-corrosive or non-deteriorating shim material, to a plumb and square position. Use flat head, countersunk screws to fasten frame into the opening, through the glazing pocket. Apply a continuous perimeter bead of sealant at interior and exterior side of frame.
- Install interior (lock-in) gasket prior to installing glass. Set glass lites, properly blocking at (max.) quarter point locations and install the glass stop extrusion. Glaze the exterior (roll-in) gasket properly to achieve tight, closed corners.

Note: Per independent laboratory testing; CMI requires both interior and exterior perimeter frame sealant to meet specified performance.



JAMB



VERTICAL MULLION



HQ + MANUFACTURING
20621 HWY 25 N.
DESMET, SOUTH DAKOTA 57231
TOLL FREE: 800-324-2070
PHONE: (605) 854-3326
FAX: (605) 584-3620

SALES + ENGINEERING
1630 101ST AVE NE, SUITE 130
BLAINE, MN 55449
TOLL FREE: 800-334-1533
PHONE: (763) 560-5567
FAX: (763) 560-6399

MANUFACTURING
57135 WOODHOUSE DR.
DOWAGIAC, MI 49047
PHONE: (269) 782-0299

WWW.CMIARCH.COM

450FG FRAME ASSEMBLY
SCREW SPLINE SYSTEM

SHEET #:

450FG-SS

UPDATED: OCTOBER 12, 2022