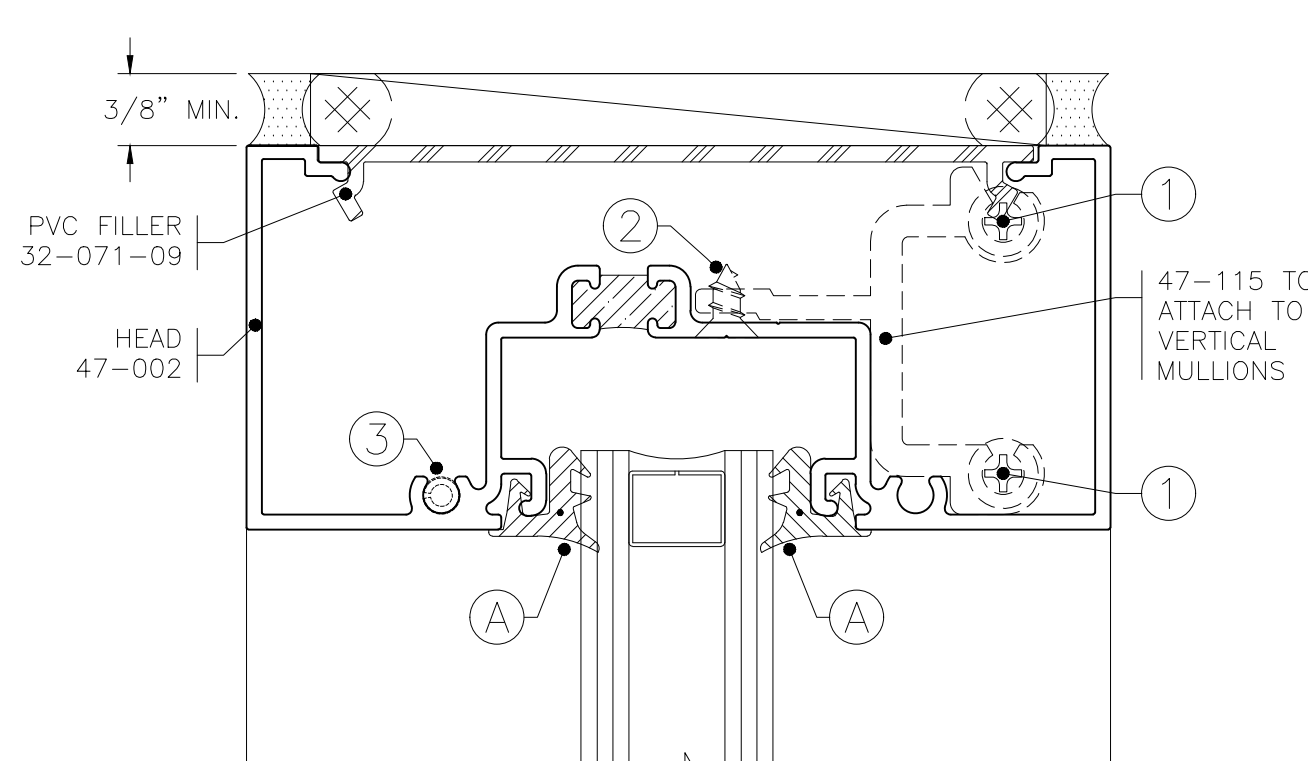
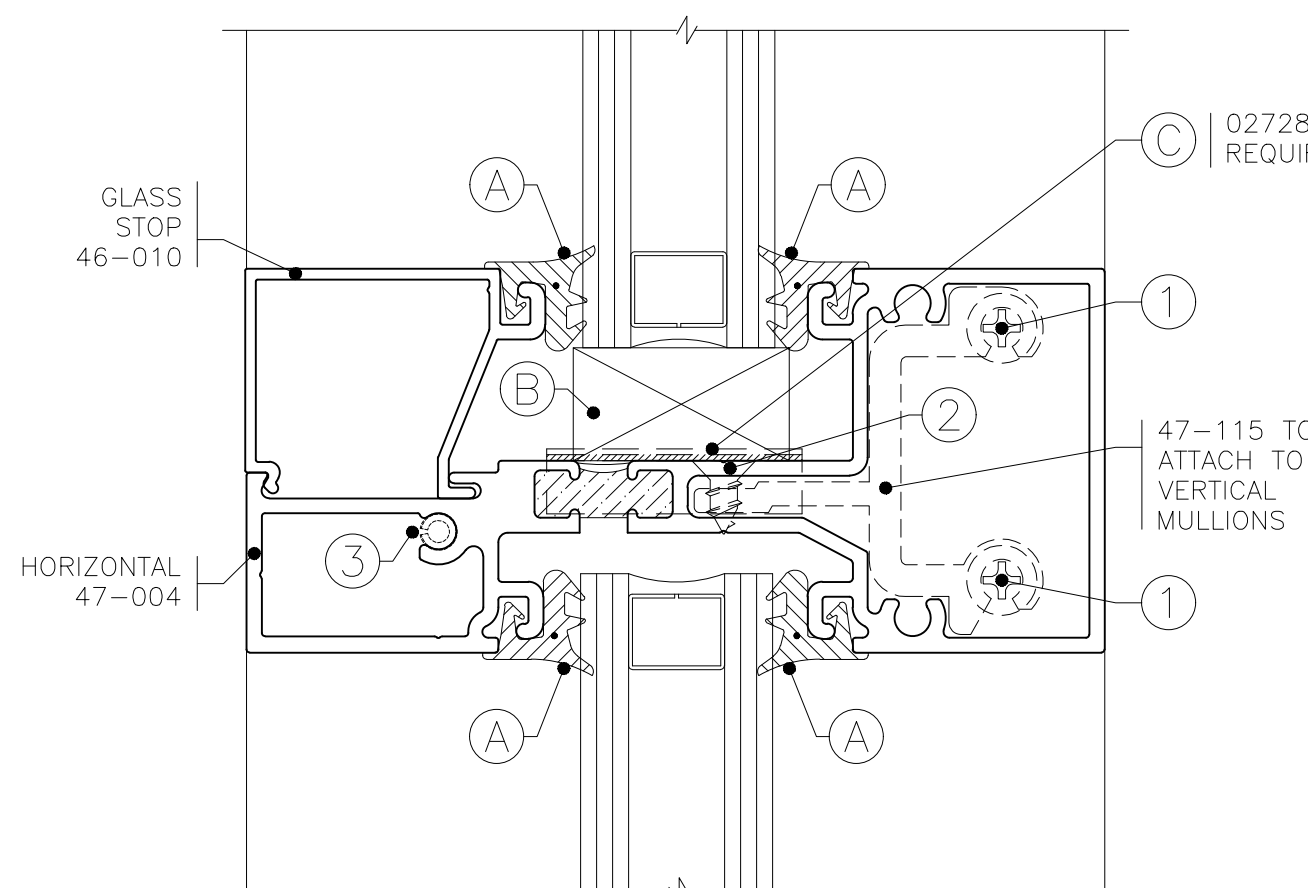


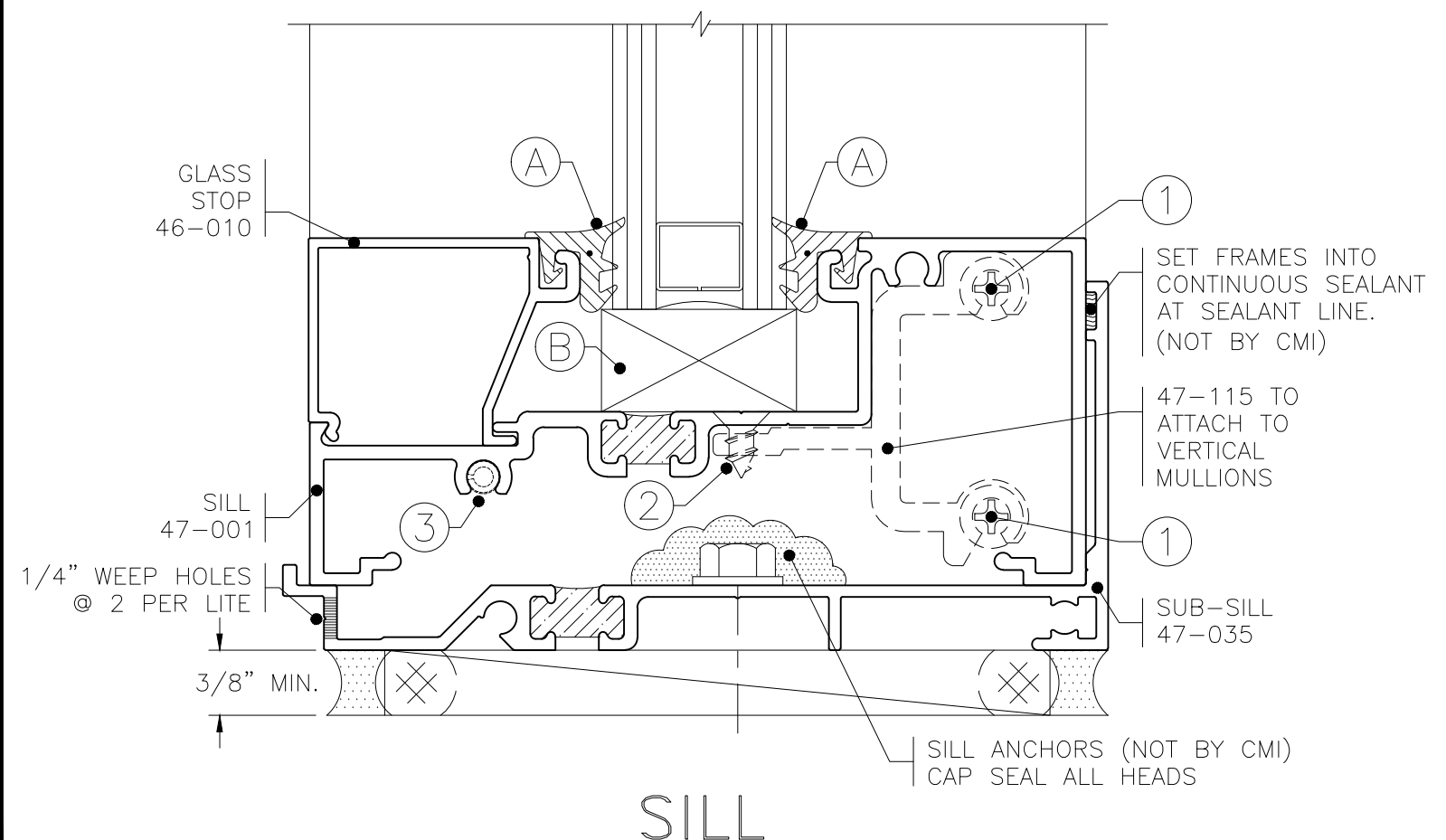
450TB FRAMING ASSEMBLY  
SHEAR BLOCK SYSTEM



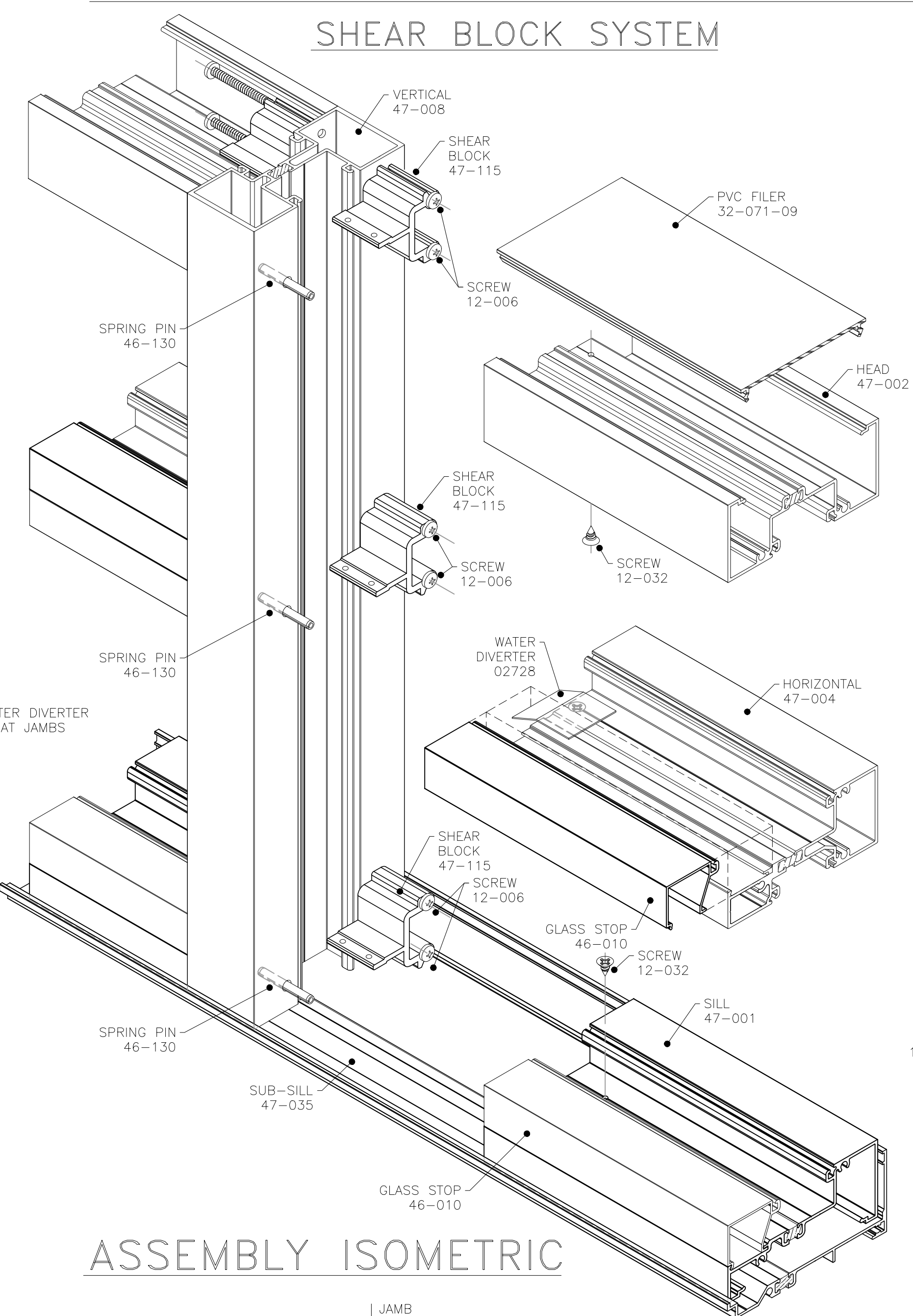
HEAD



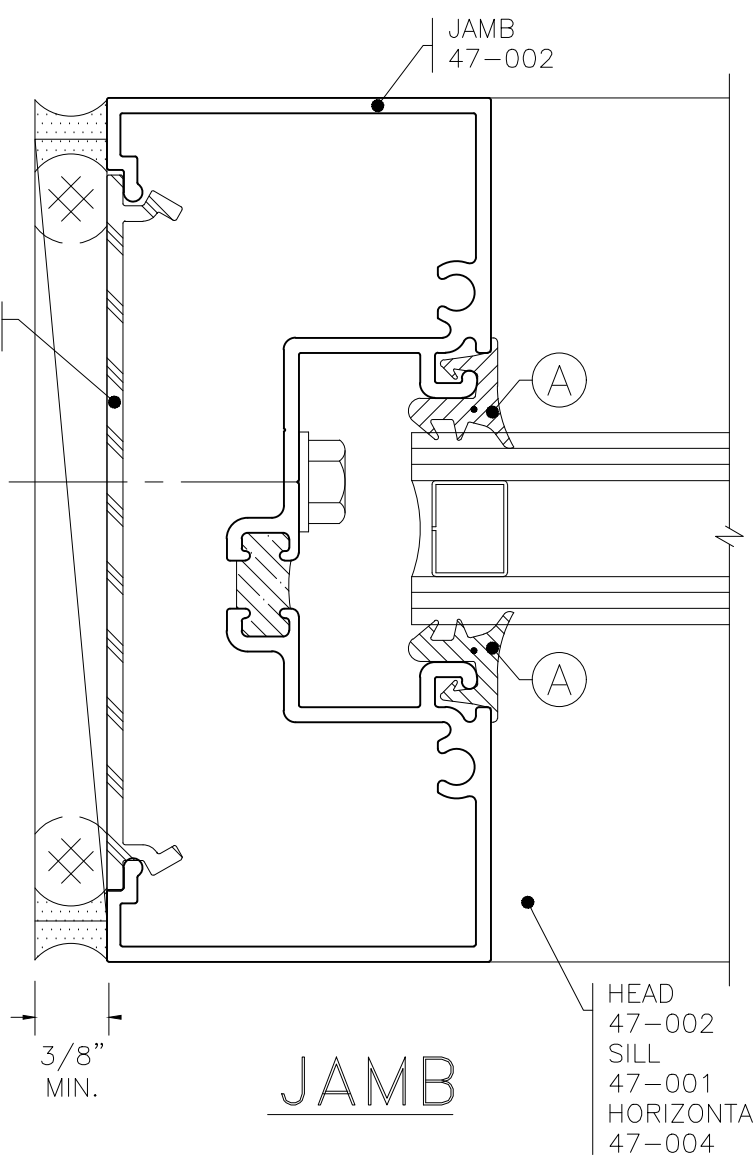
HORIZONTAL MULLION



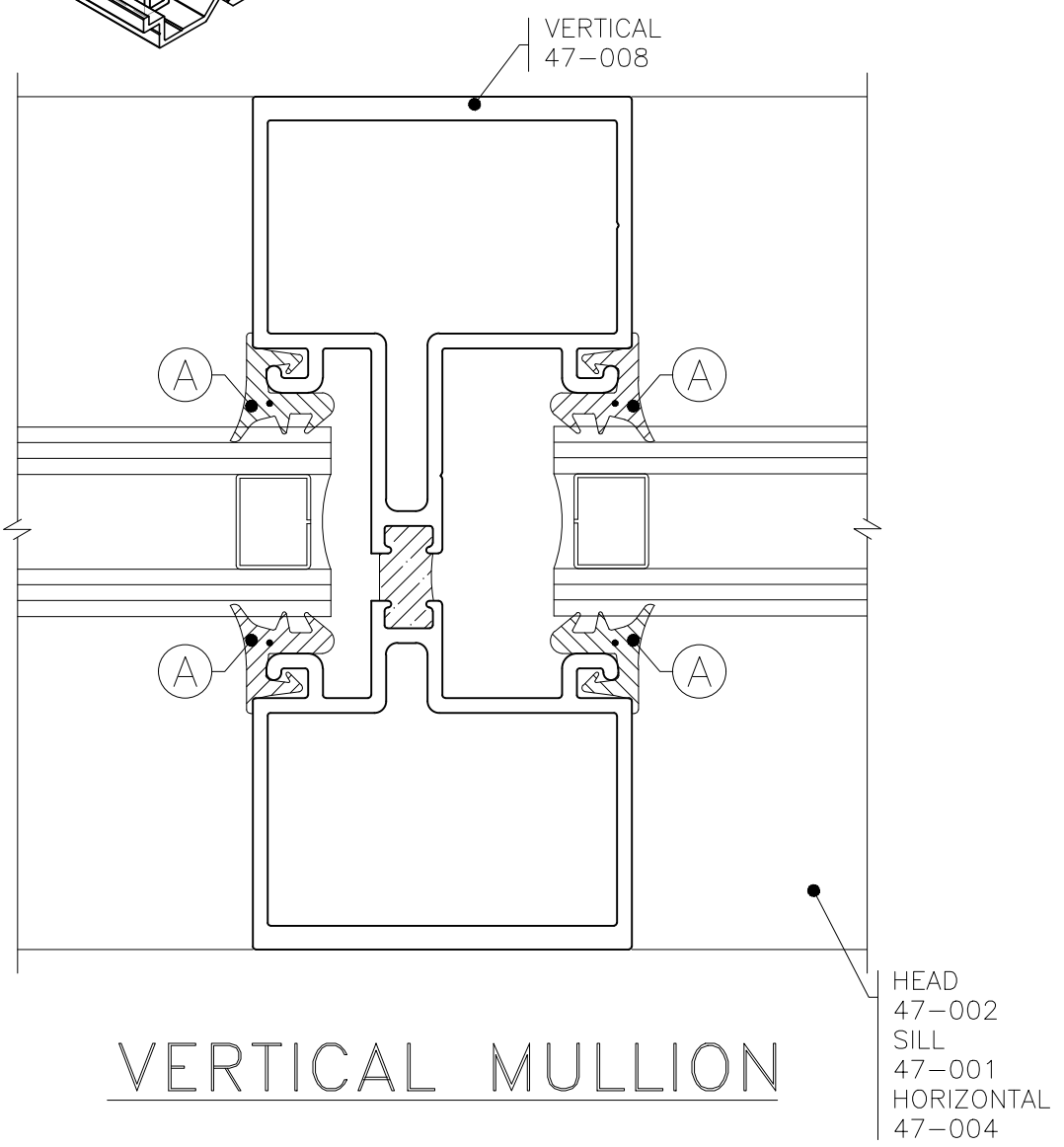
SILL



ASSEMBLY ISOMETRIC



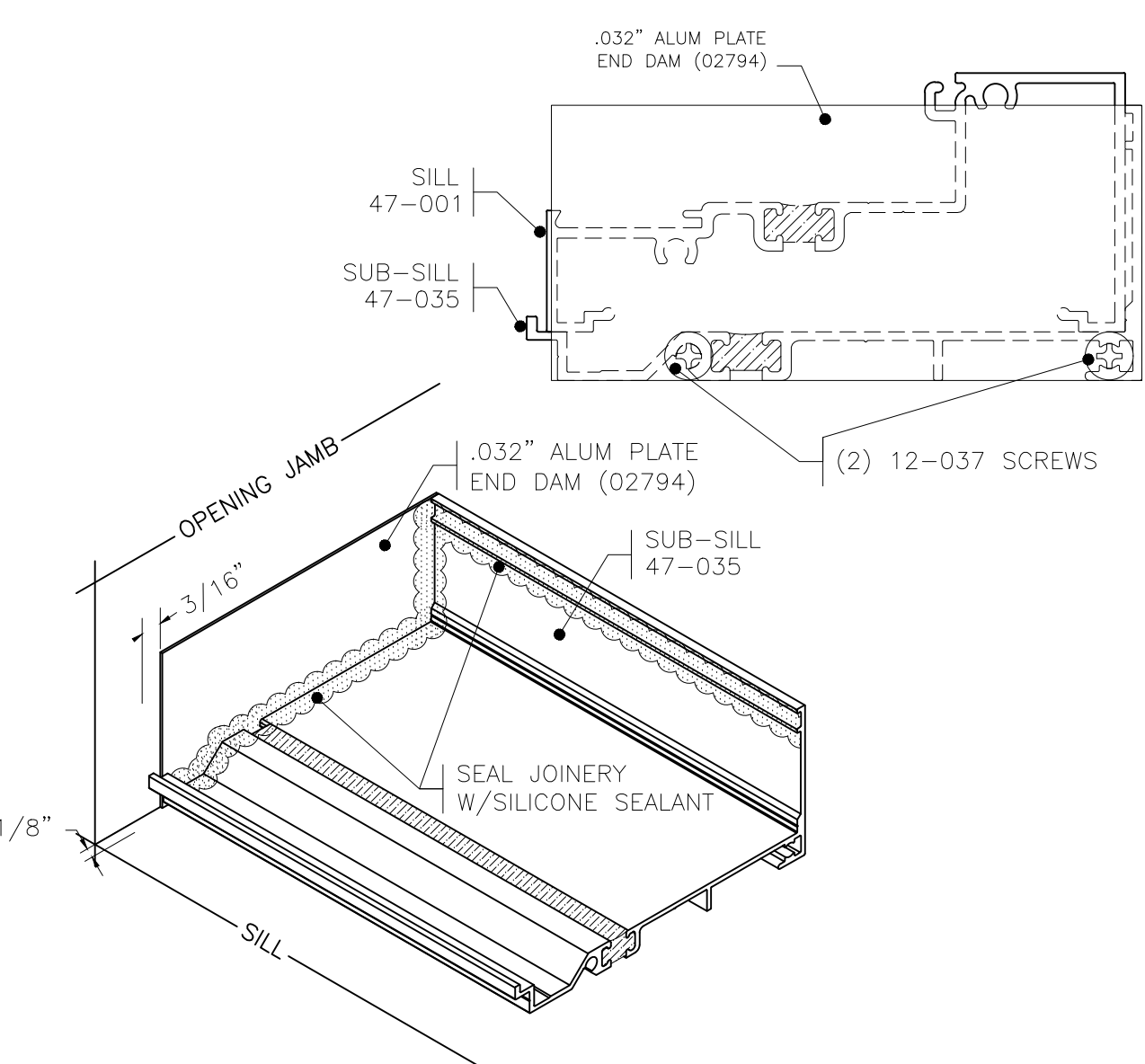
JAMB



VERTICAL MULLION

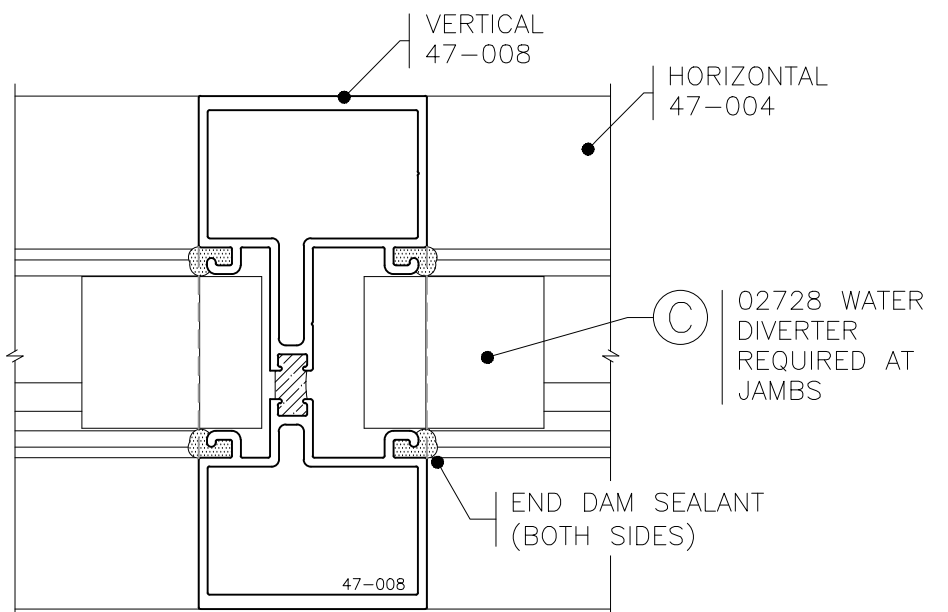
FASTENERS	GASKETS
1 #10 x 2" PAN HEAD TEX 3 SCREW 12-006 ZINC PLATED STEEL	A PUSH IN GASKET INTERIOR/EXTERIOR 19-120 E.P.D.M.
2 #10 x 3/8" ATTACH HORZ. 12-032 ZINC PLATED STEEL	B SETTING BLOCK 9/16" x 1 1/8" x 3" 46-124 E.P.D.M.
3 3/16" x 1 1/2" SLOTTED STEEL SPRING PIN 14-130	C WATER DIVERTER 2728

NOTE: PER INDEPENDENT LABORATORY TESTING; CMI REQUIRES BOTH INTERIOR AND EXTERIOR PERIMETER FRAME SEALANT TO MEET SPECIFIED PERFORMANCE.

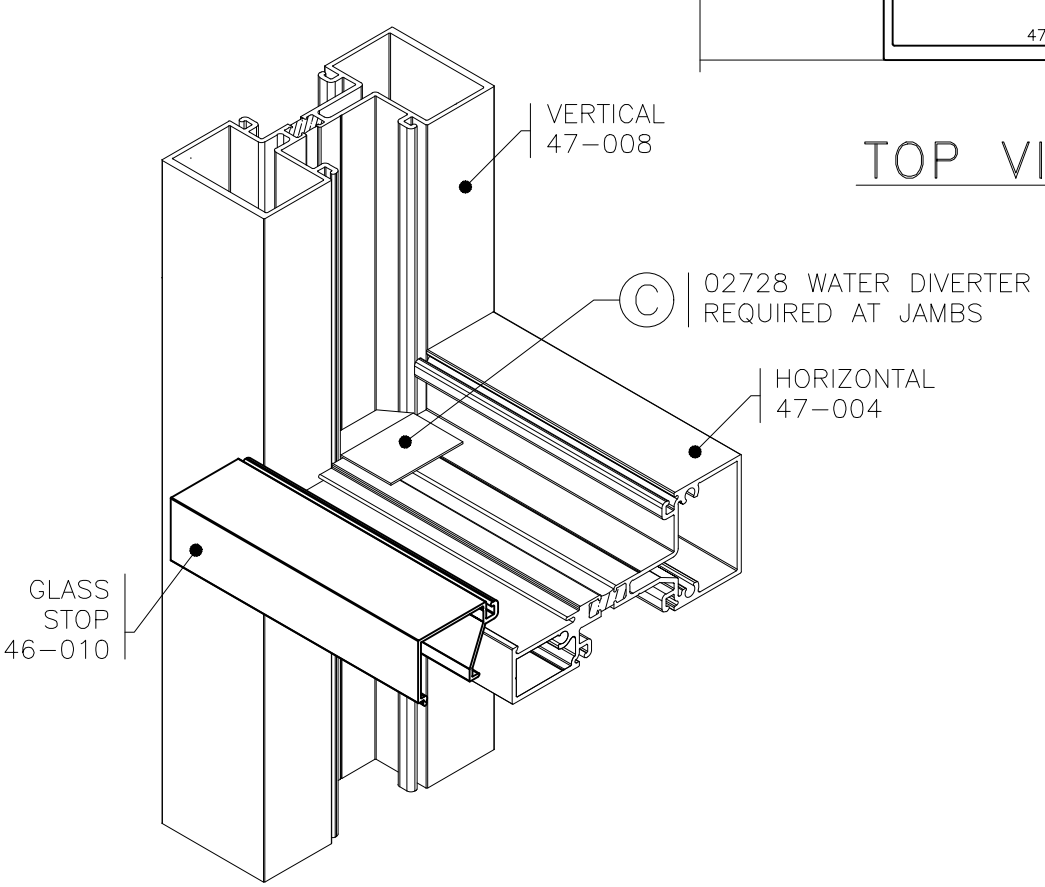


EXTRUDED SUBSILL / END DAM

- GENERAL NOTES
- Building code laws vary by area. CMI Architectural Products does not interpret local codes for the appropriate selection of product configurations, hardware, and glazing materials and therefore assumes no responsibility. It is the responsibility of the owner, Architect, and installer to comply with all applicable building codes and laws.
  - All work shall be performed in accordance with CMI Architectural Products approved shop drawings and owner's project documents. Notify the manufacturer of any deviations or discrepancies.
  - All framing shall be erected plumb and true, in proper alignment and relation to established lines, grades, and elevations.
  - Materials stored on the job site shall be properly blocked and covered to allow adequate water run-off and protection from sustained moisture. Provide air ventilation at the bottom side of covered materials.
  - CMI Architectural Products recommends that all project documents be reviewed by our engineers and that shop drawings be developed by CMI. CMI requires one approved set of shop drawings prior to the start of all fabrication. Glazing contractors providing their own shop drawings shall assume full responsibility and liability for their own work.
  - Check the opening to allow 3/8" at sides, top, and bottom so that the frame may be properly plumbed and squared.
  - Apply sealant to all ends of all intersecting horizontal framing members. Assemble frames by applying screws through the horizontal members. Screw fasten to the joint shear blocks pre-mounted to the vertical members.
  - Shim the subsill level and anchor into the opening, cap seal all anchor screws and seal inside and out. Apply a continuous bead of non-hardening sealant to the inside back leg of the subsill before setting the main frame.
  - Install frame, properly shimming with non-corrosive or non-deteriorating shim material, to a plumb and square position. Use flat head, countersunk screws to fasten frame into the opening, through the glazing pocket, at the jambs and head. At the sill, screw through the back of the subsill to attach the frame. Apply a continuous perimeter bead of sealant at interior and exterior side of frame.
  - Apply push-in gasket at interior prior to setting glass. Set glass, block properly and apply glass stop. Glaze exterior with push-in gasket.



TOP VIEW



WATER DIVERTER



HQ + MANUFACTURING  
20621 HWY 25 N.  
DESMET, SOUTH DAKOTA 57231  
TOLL FREE: 800-324-2070  
PHONE: (605) 854-3326  
FAX: (605) 584-3620

SALES + ENGINEERING  
1630 101ST AVE NE, SUITE 130  
BLAINE, MN 55449  
TOLL FREE: 800-334-1533  
PHONE: (763) 560-5567  
FAX: (763) 560-6399

MANUFACTURING  
57135 WOODHOUSE DR.  
DOWAGIAC, MI 49047  
PHONE: (269) 782-0299

WWW.CMIARCH.COM

450TB-CS FRAME ASSEMBLY  
SHEAR BLOCK SYSTEM

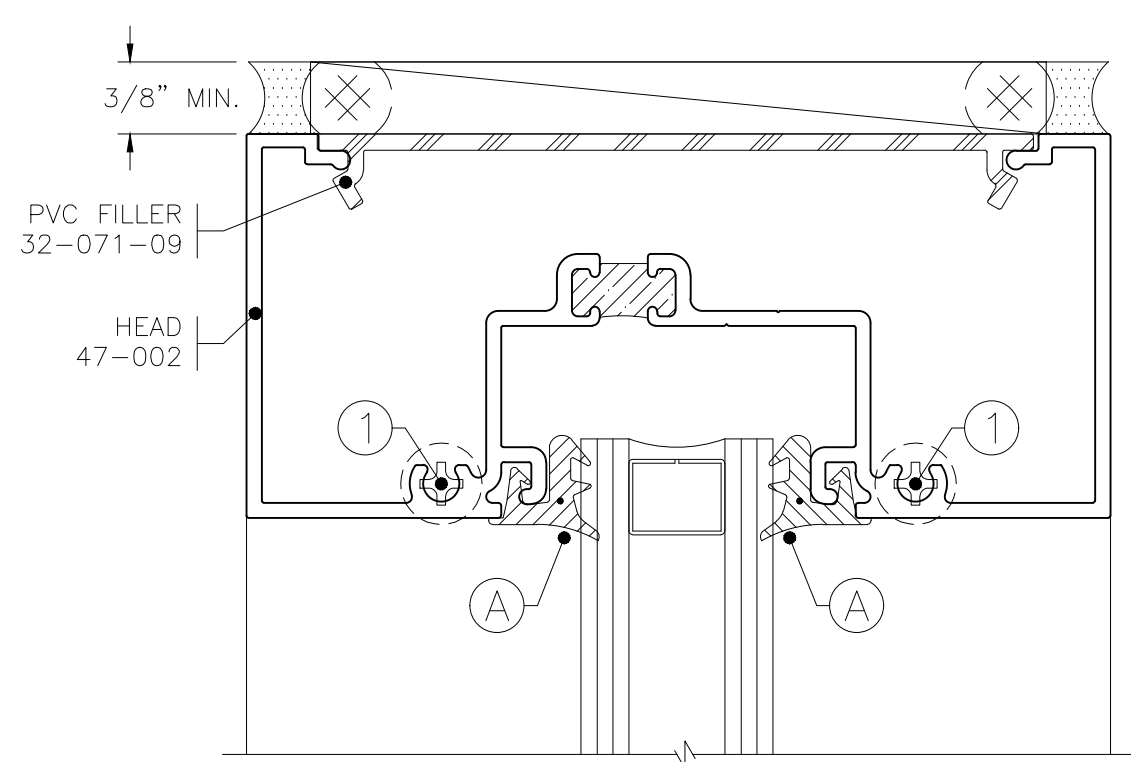
SHEET #:

450TB-CS-SB

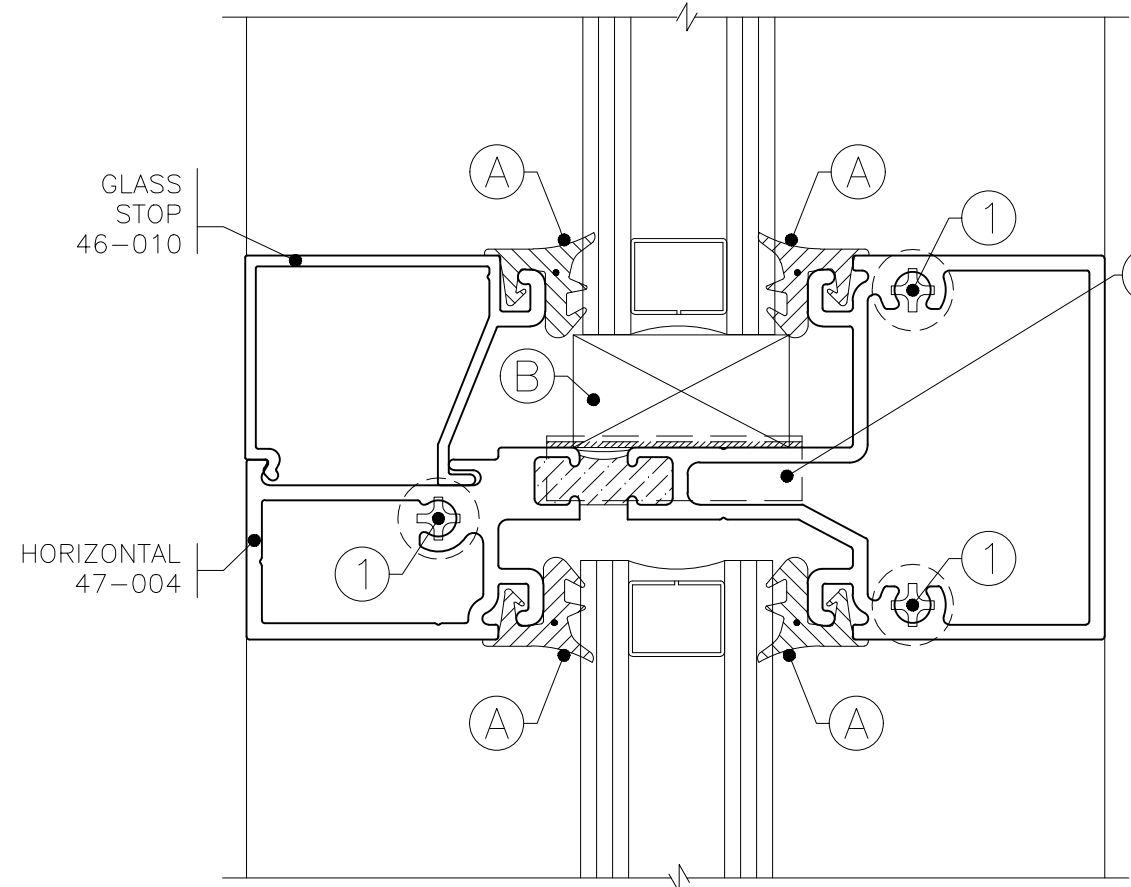
UPDATED: AUGUST 10, 2022

# 450TB FRAMING ASSEMBLY

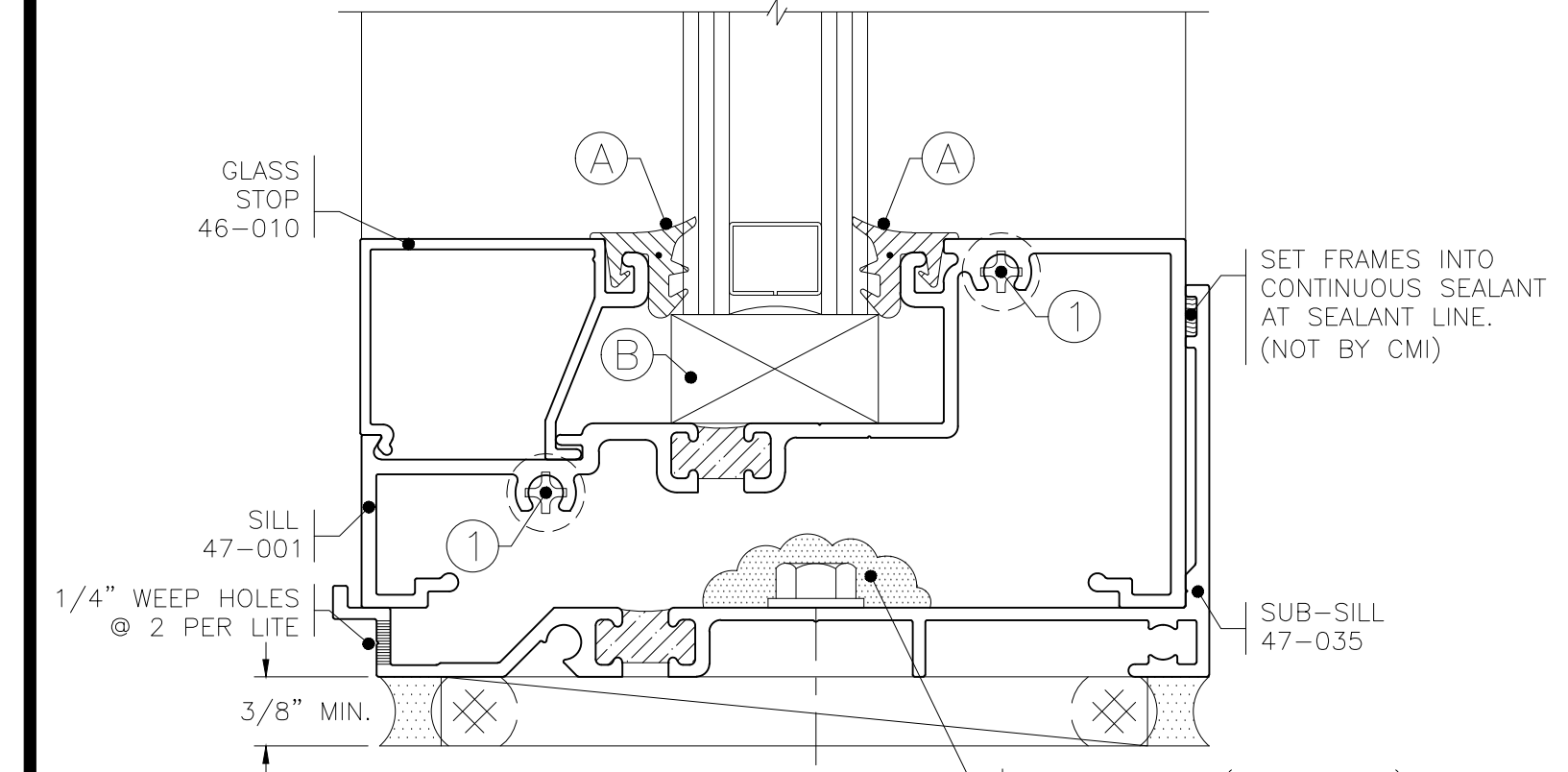
## SCREW SPLINE SYSTEM



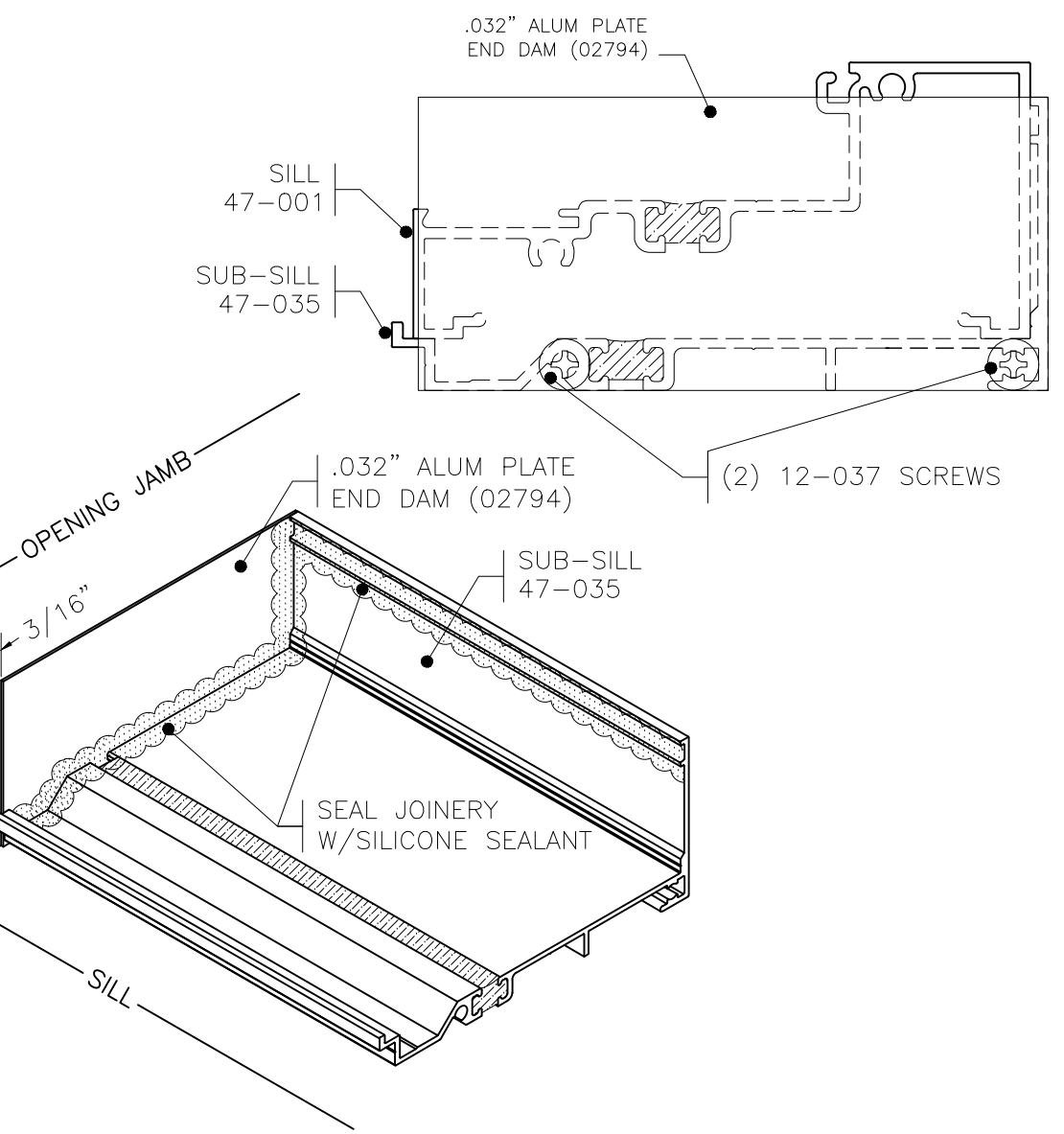
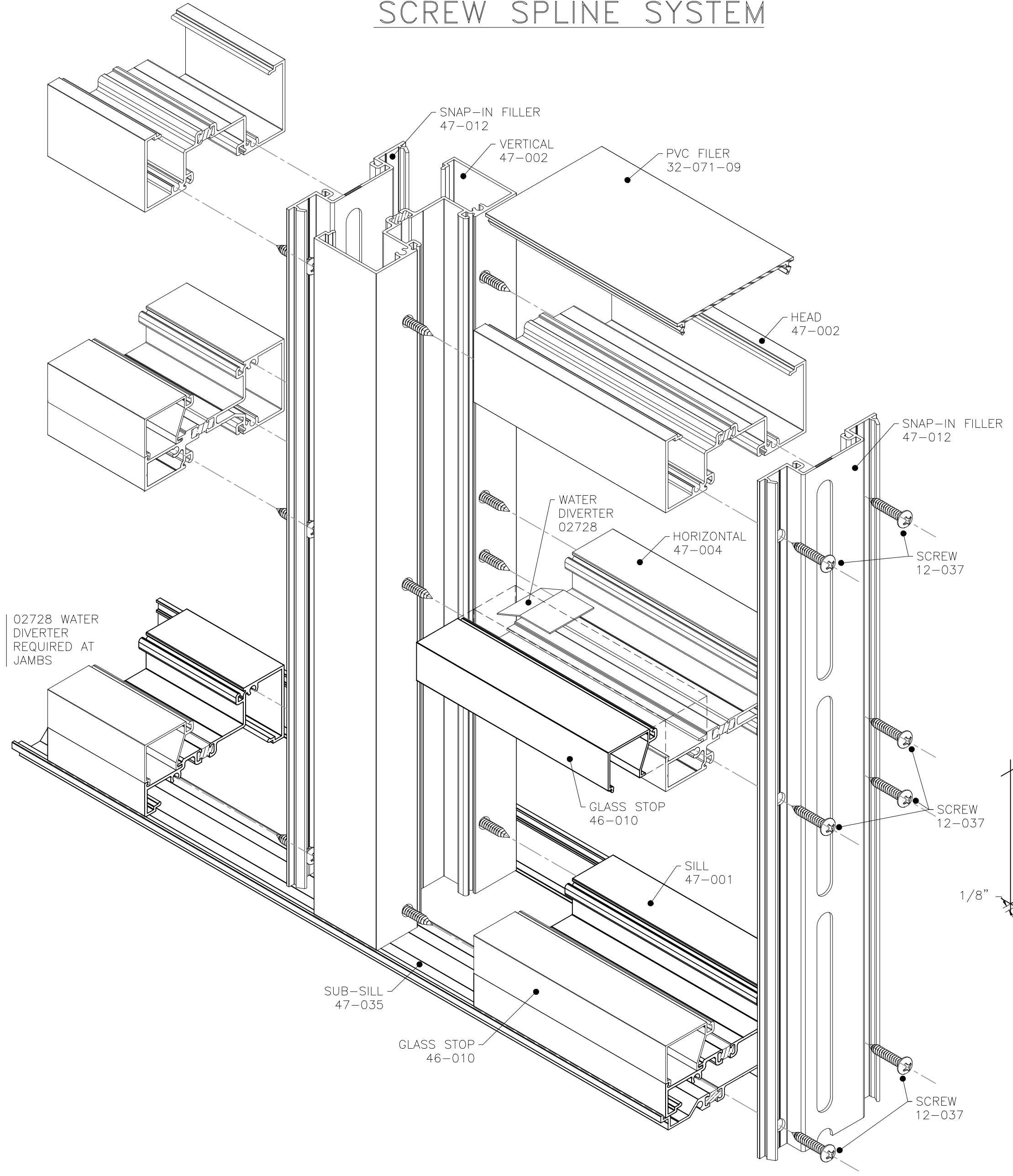
HEAD



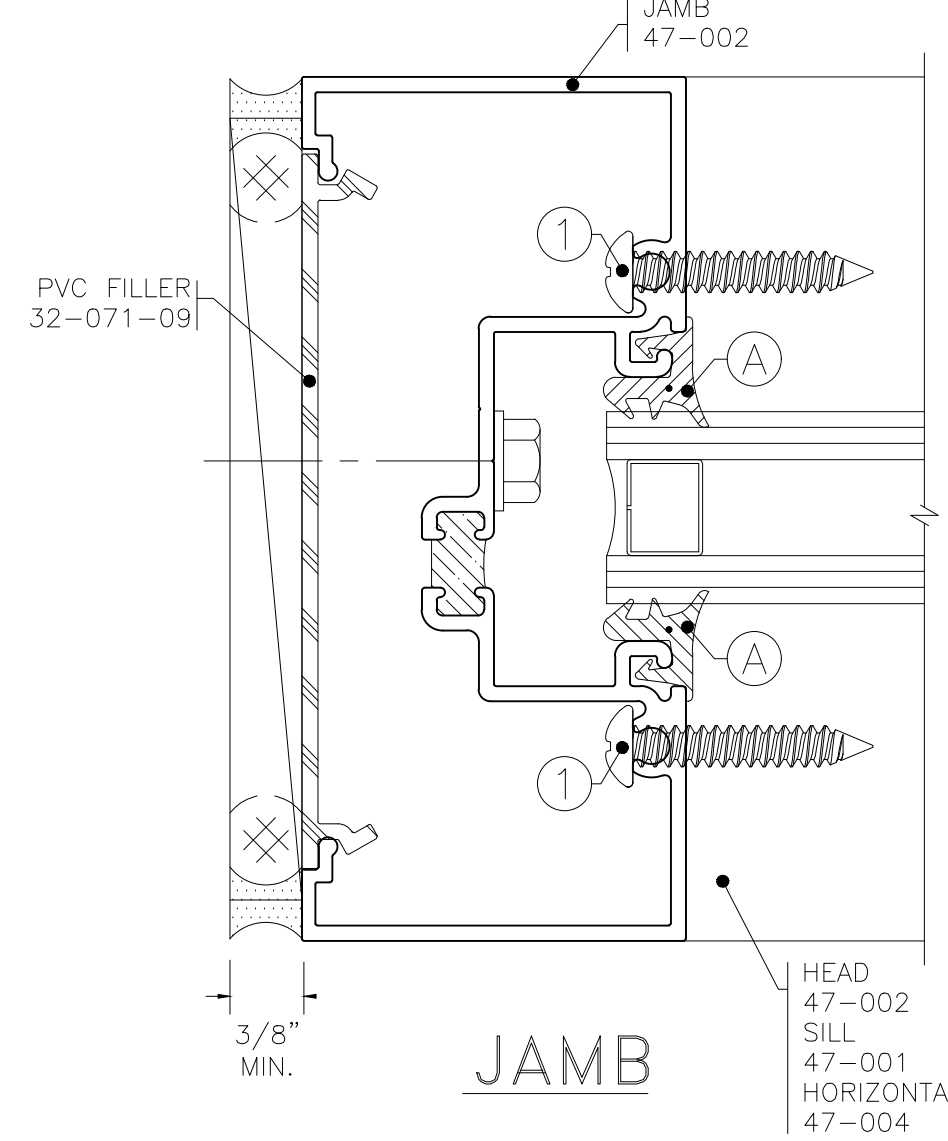
HORIZONTAL MULLION



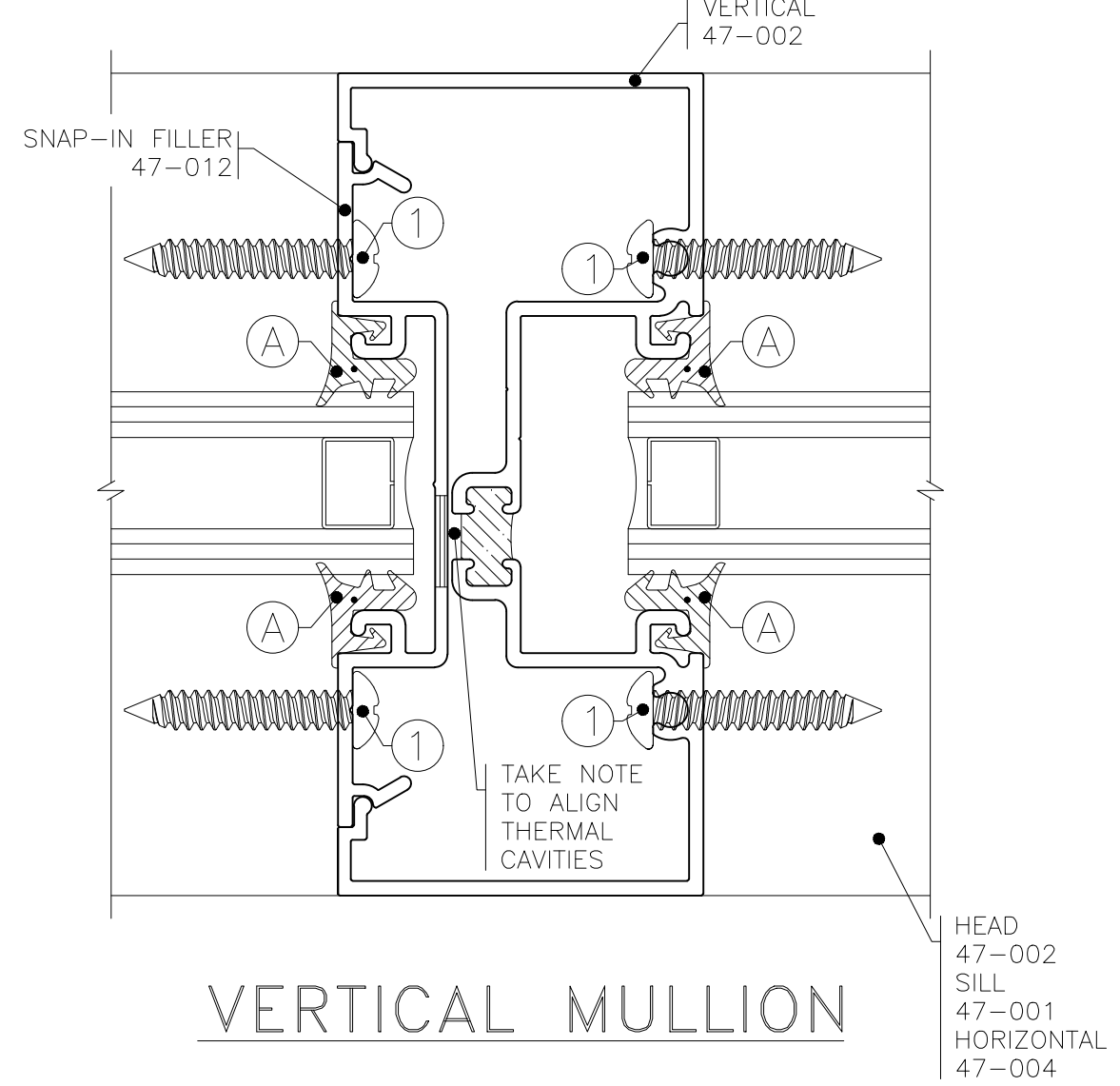
SILL



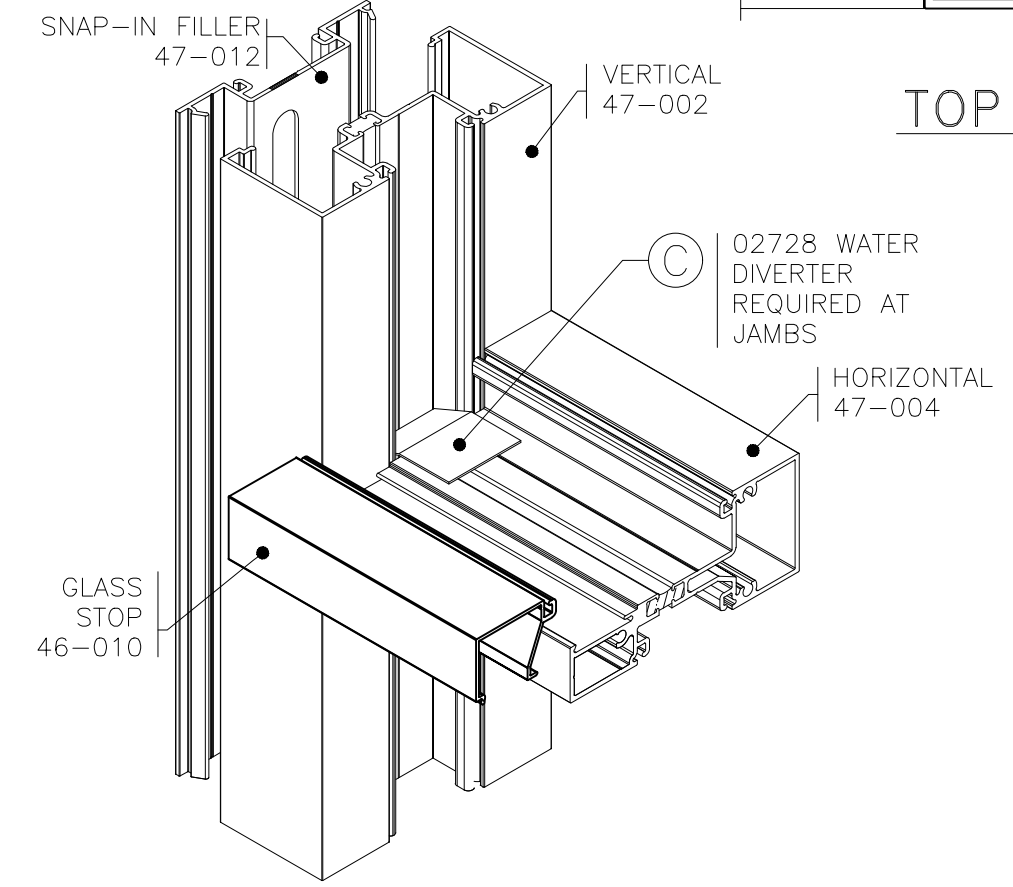
EXTRUDED SUBSILL / END DAM



JAMB

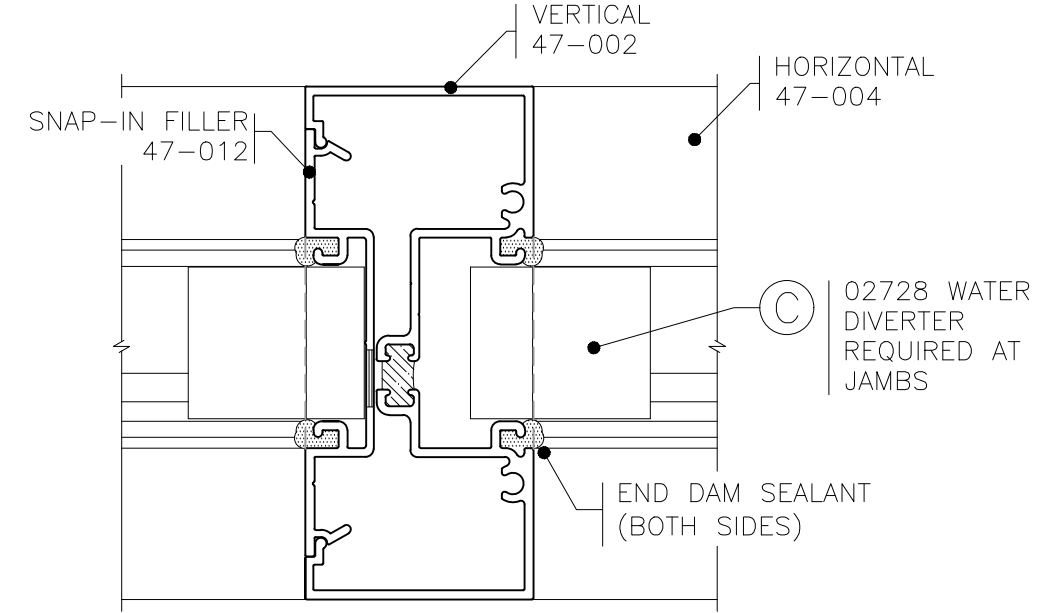


VERTICAL MULLION



WATER DIVERTER

- ### GENERAL NOTES
- Building code laws vary by area. CMI Architectural Products does not interpret local codes for the appropriate selection of product configurations, hardware, and glazing materials and therefore assumes no responsibility. It is the responsibility of the owner, Architect, and installer to comply with all applicable building codes and laws.
  - All work shall be performed in accordance with CMI Architectural Products approved shop drawings and owner's project documents. Notify the manufacturer of any deviations or discrepancies.
  - All framing shall be erected plumb and true, in proper alignment and relation to established lines, grades, and elevations.
  - Materials stored on the job site shall be properly blocked and covered to allow adequate water run-off and protection from sustained moisture. Provide air ventilation at the bottom side of covered materials.
  - CMI Architectural Products recommends that all project documents be reviewed by our engineers and that shop drawings be developed by CMI. CMI requires one approved set of shop drawings prior to the start of all fabrication. Glazing contractors providing their own shop drawings shall assume full responsibility and liability for their own work.
  - Check the opening to allow 3/8" at sides, top, and bottom so that the frame may be properly plumbed and squared.
  - Apply sealant to all ends of all intersecting horizontal framing members. Assemble frames by applying screws through the horizontal members. Screw fasten to the joint shear blocks pre-mounted to the vertical members.
  - Shim the subsill level and anchor into the opening, cap seal all anchor screws and seal inside and out. Apply a continuous bead of non-hardening sealant to the inside back leg of the subsill before setting the main frame.
  - Install frame, properly shimming with non-corrosive or non-deteriorating shim material, to a plumb and square position. Use flat head, countersunk screws to fasten frame into the opening, through the glazing pocket, at the jambs and head. At the sill, screw through the back of the subsill to attach the frame. Apply a continuous perimeter bead of sealant at interior and exterior side of frame.
  - Apply push-in gasket at interior prior to setting glass. Set glass, block properly and apply glass stop. Glaze exterior with push-in gasket.



TOP VIEW

FASTENERS		GASKETS	
1	#12 x 1 3/4" PAN HEAD SMS 12-037 ZINC PLATED STEEL	A	PUSH IN GASKET INTERIOR/EXTERIOR 19-120 E.P.D.M.
NOTE: PER INDEPENDENT LABORATORY TESTING; CMI REQUIRES BOTH INTERIOR AND EXTERIOR PERIMETER FRAME SEALANT TO MEET SPECIFIED PERFORMANCE.		B	SETTING BLOCK 9/16" x 1 1/8" x 3" 46-124 E.P.D.M.
		C	WATER DIVERTER 2728



HQ + MANUFACTURING  
20621 HWY 25 N.  
DESMET, SOUTH DAKOTA 57231  
TOLL FREE: 800-324-2070  
PHONE: (605) 854-3326  
FAX: (605) 584-3620

SALES + ENGINEERING  
1630 101ST AVE NE, SUITE 130  
BLAINE, MN 55449  
TOLL FREE: 800-334-1533  
PHONE: (763) 560-5567  
FAX: (763) 560-6399

MANUFACTURING  
57135 WOODHOUSE DR.  
DOWAGIAC, MI 49047  
PHONE: (269) 782-0299

WWW.CMIARCH.COM

# 450TB-CS FRAME ASSEMBLY

## SCREW SPLINE SYSTEM

SHEET #:

# 450TB-CS-SS

UPDATED: AUGUST 10, 2022