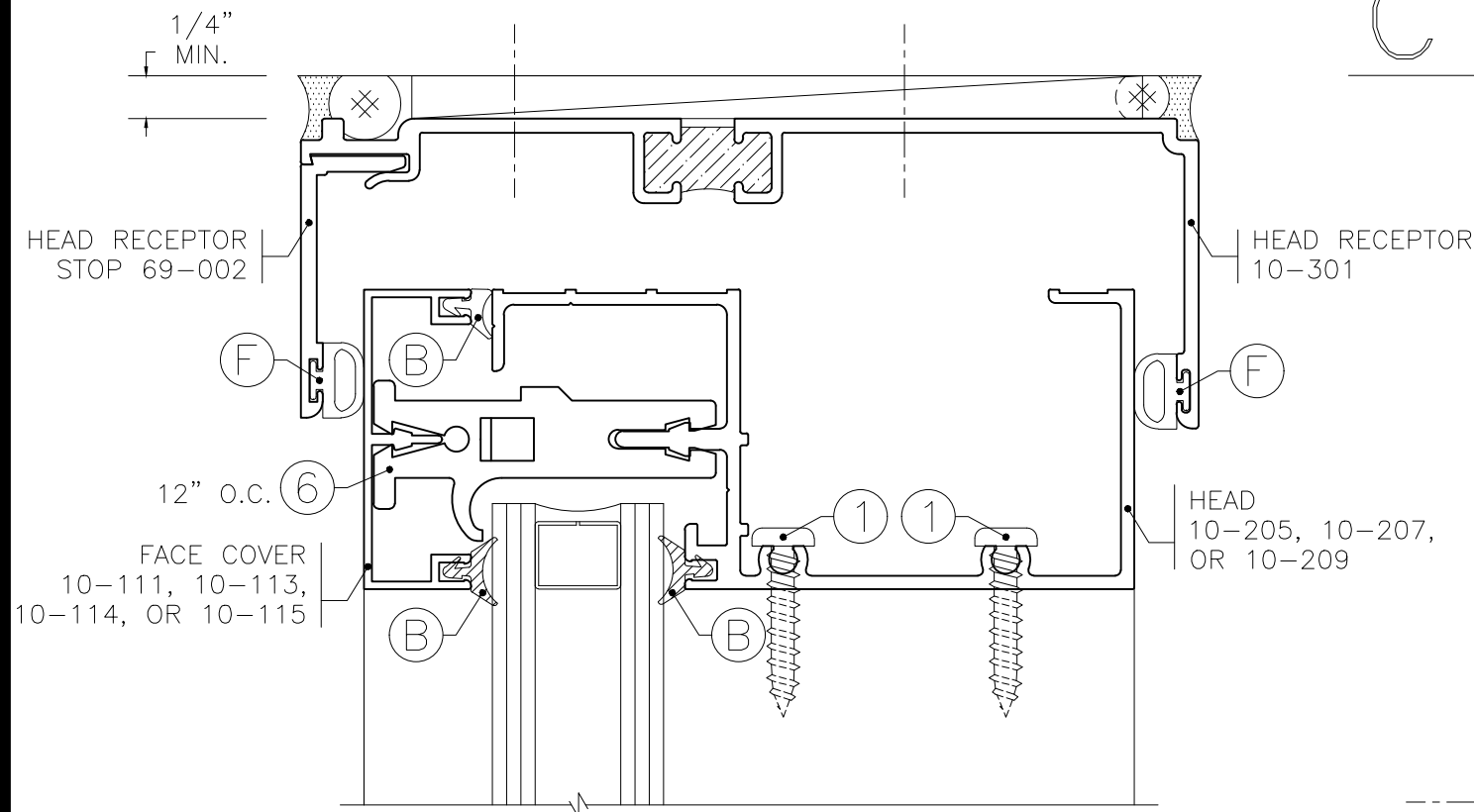
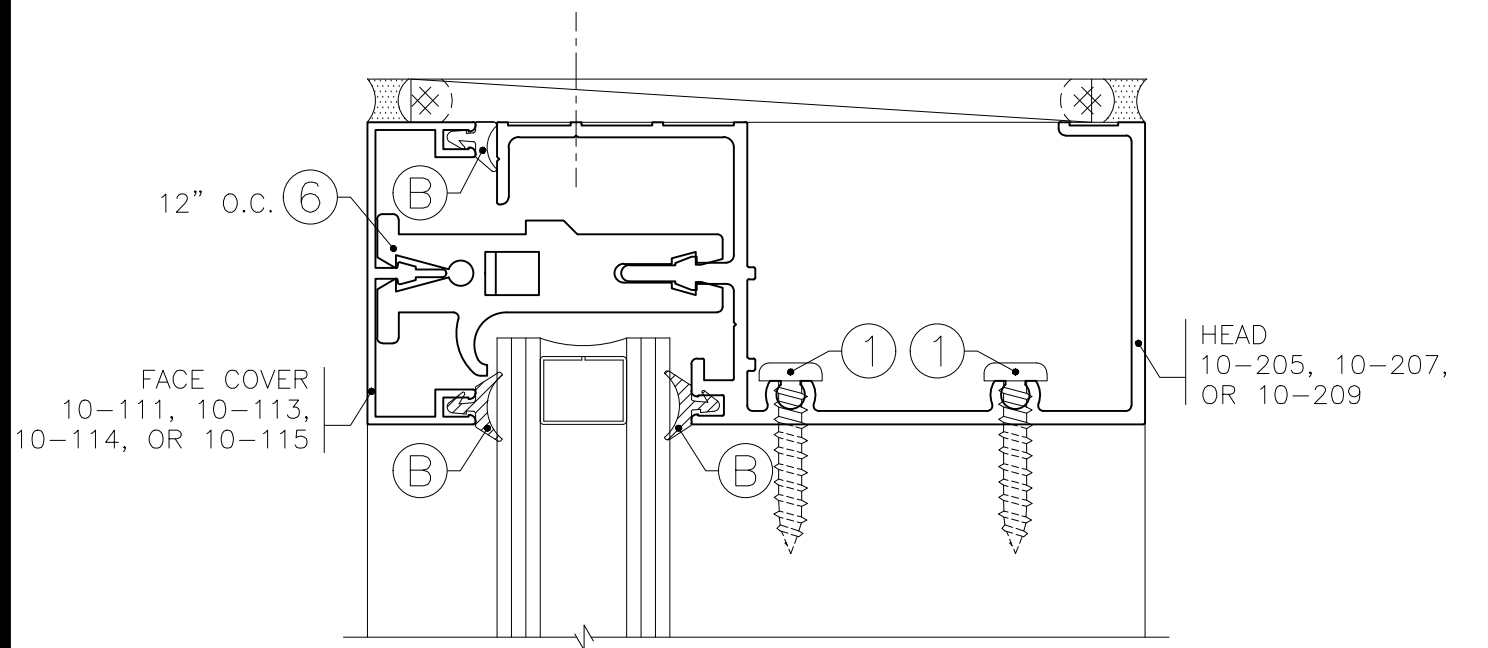


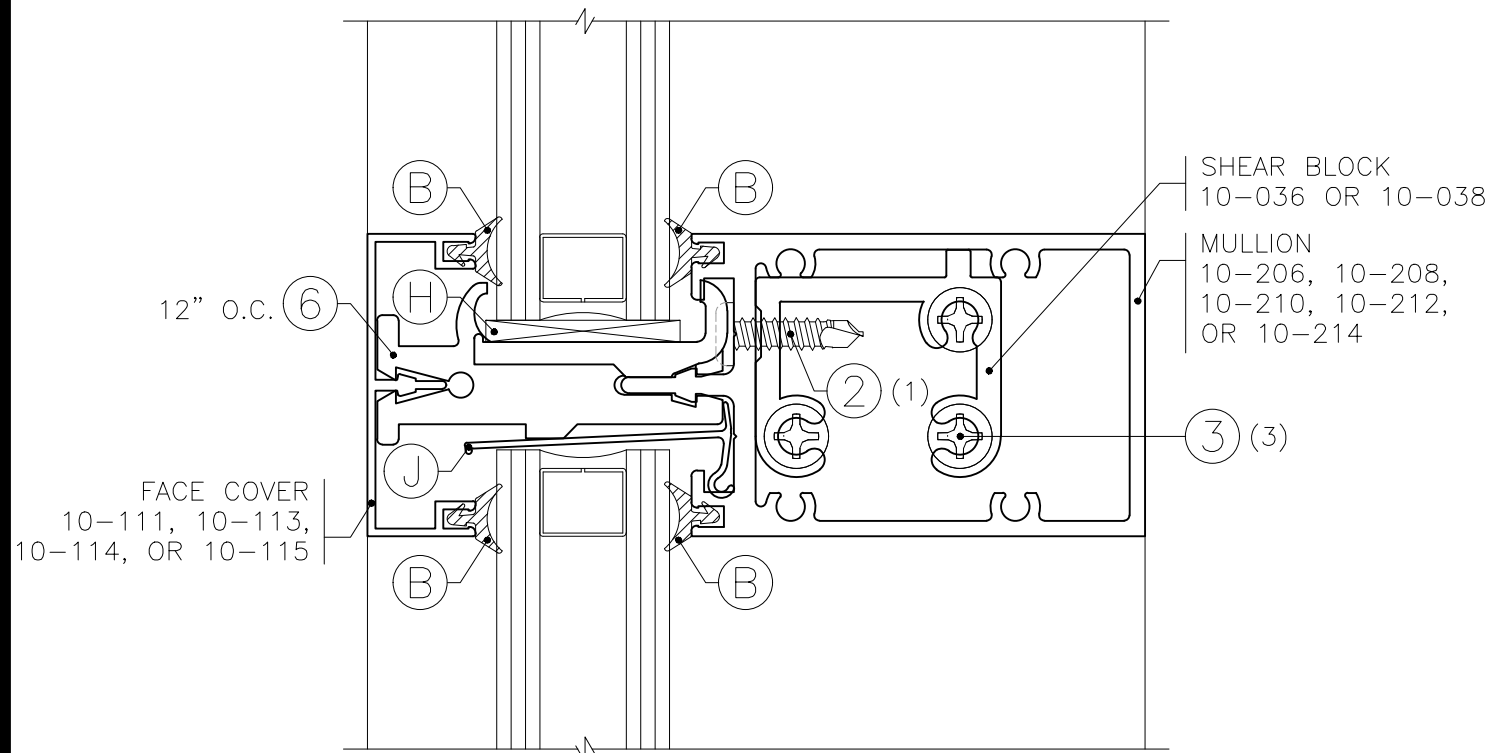
CTS FRAMING ASSEMBLY



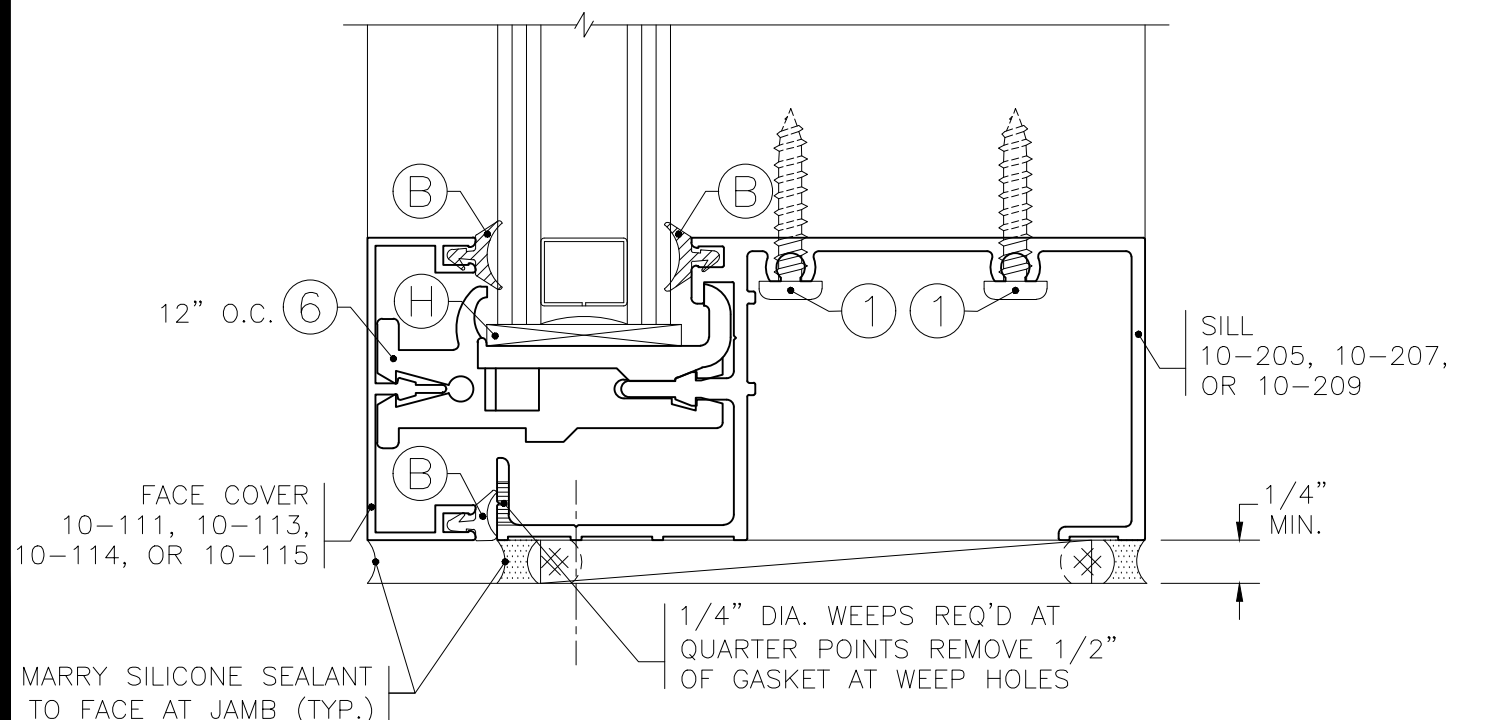
HEAD RECEPTOR



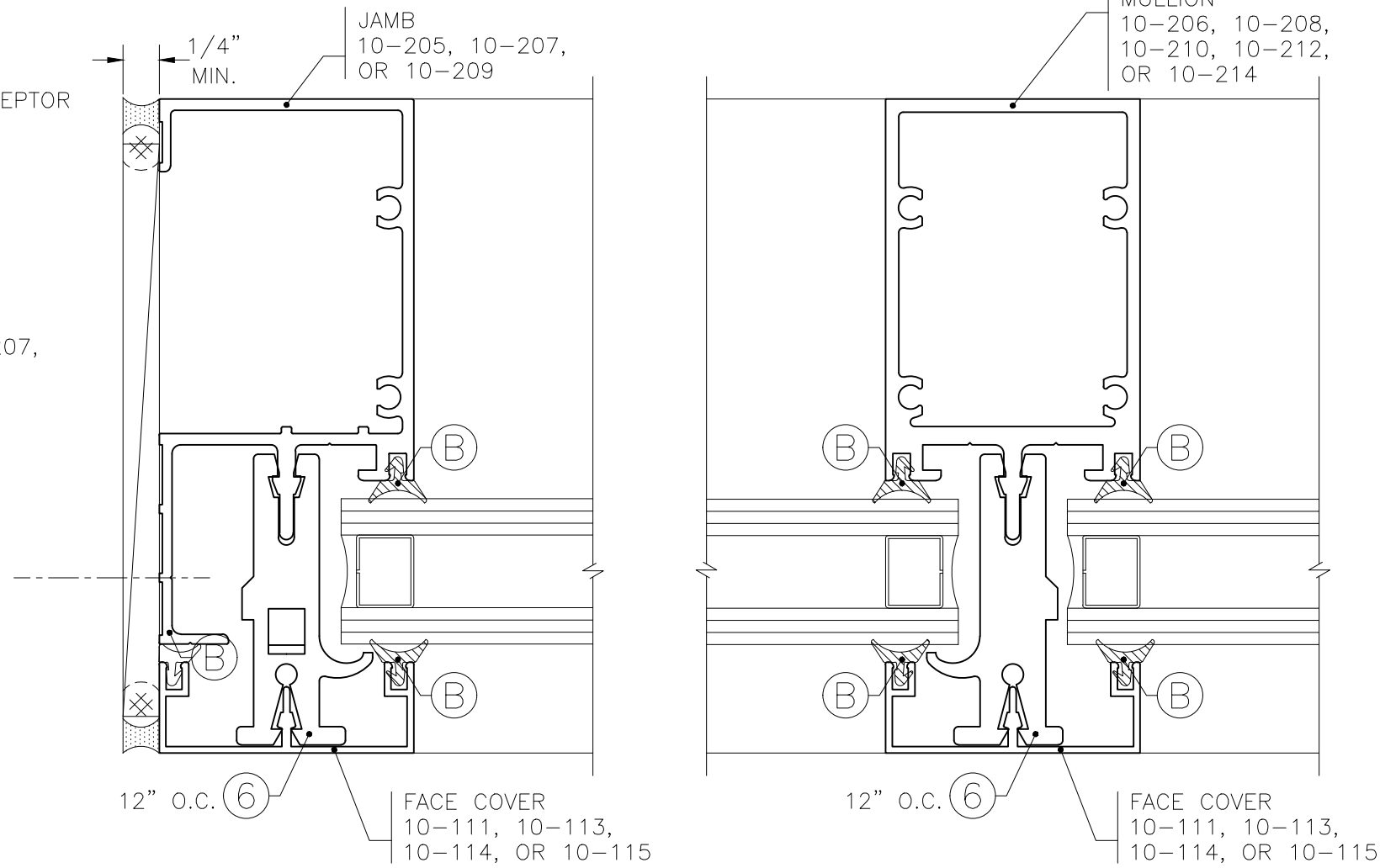
HEAD



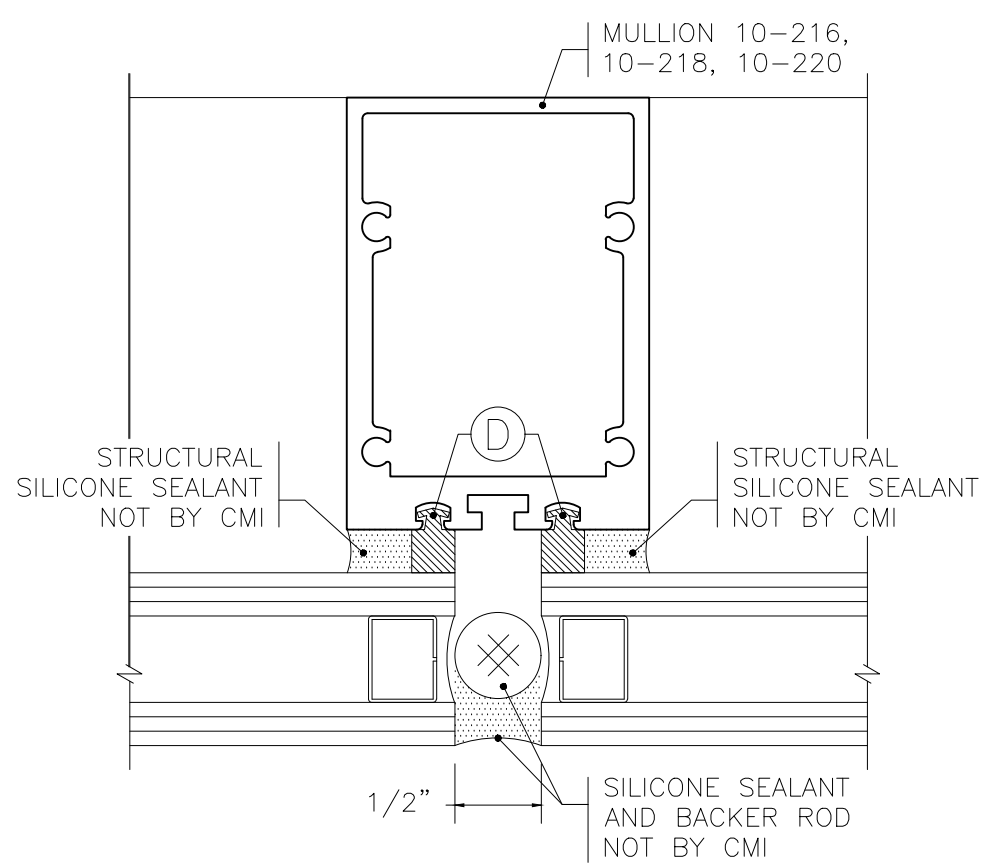
HORIZONTAL



SILL

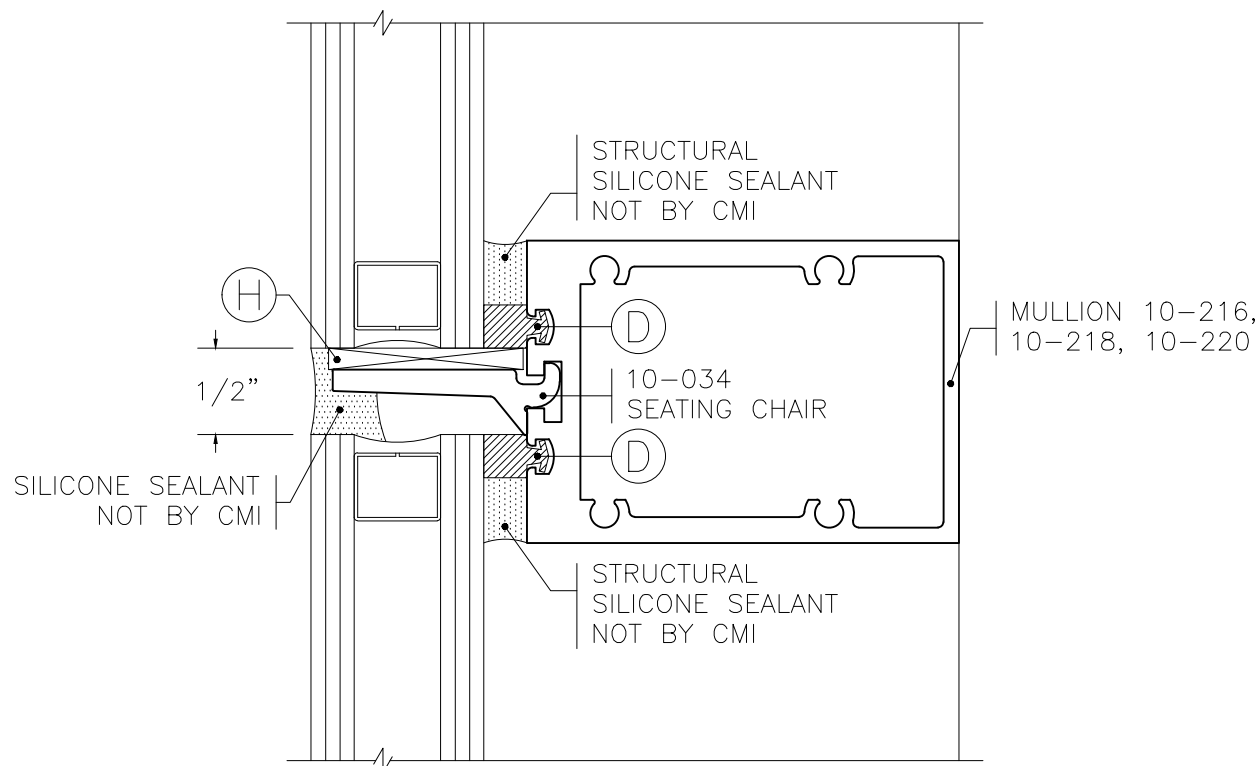


JAMB



VERTICAL BUTT GLAZE MULLION

NOTE: REQUEST STRUCTURAL GLAZING REQUIREMENT DOCUMENT FROM CMI



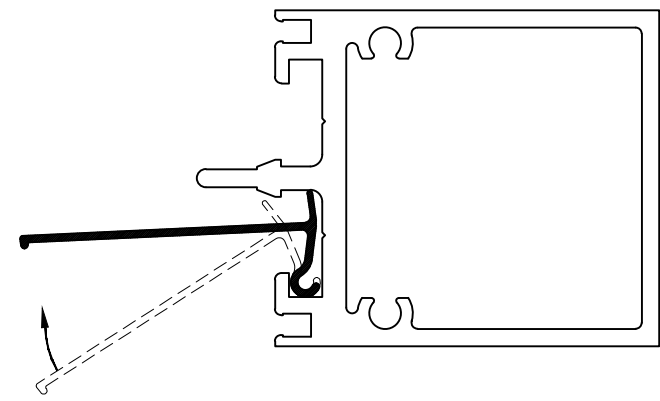
HORIZONTAL BUTT GLAZE MULLION

FASTENERS		GASKETS		
1	#10 x 1" P.H. SCREW SPLINE 12-024 ZINC PLATED STEEL	A	LOCK IN 19-077 E.P.D.M.	F BULB GASKET HEAD RECEPTOR INT./EXT. 19-197 E.P.D.M.
2	#10-16 x 3/4" P.H., TEK 3 MULLION TO SHEAR BLOCK 12-112 ZINC PLATED STEEL	B	LOCK IN 19-053 E.P.D.M.	G SETTING BLOCK 1/8" x 1 1/8" x 3" 19-030 E.P.D.M.
3	#10 x 2 P.H., TEK 2 SHEAR BLOCK TO MULLION 12-006 ZINC PLATED STEEL	C	LOCK IN 19-051 E.P.D.M.	H SETTING BLOCK 19-033 NEOPRENE
4	GLAZING 1/8" TO 1/4" INFILL THERMAL SEPARATOR 10-250	D	BUTT GLAZE SPACER 19-200 SILICONE	J WATER DIVERTER 10-155
5	GLAZING 1/2" TO 5/8" INFILL THERMAL SEPARATOR 10-625	E	ROLL IN 19-085 E.P.D.M.	
6	GLAZING 7/8" TO 1" INFILL THERMAL SEPARATOR 10-100			

GENERAL NOTES

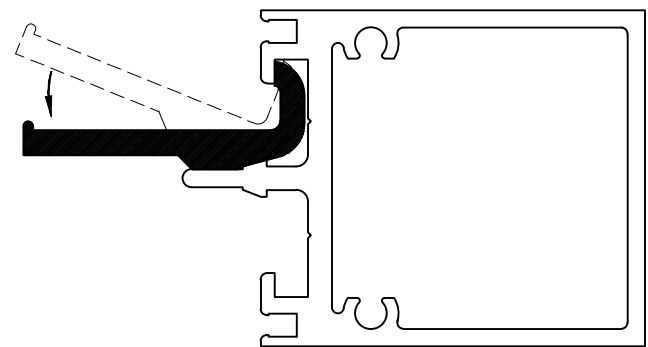
- Building code laws vary by area. CMI Architectural Products does not interpret local codes for the appropriate selection of product configurations, hardware, and glazing materials and therefore assumes no responsibility. It is the responsibility of the owner, Architect, and installer to comply with all applicable building codes and laws.
- All work shall be performed in accordance with CMI Architectural Products approved shop drawings and owner's project documents. Notify the manufacturer of any deviations or discrepancies.
- All framing shall be erected plumb and true, in proper alignment and relation to established lines, grades, and elevations.
- Materials stored on the job site shall be properly blocked and covered to allow adequate water run-off and protection from sustained moisture. Provide air ventilation at the bottom side of covered materials.
- CMI Architectural Products recommends that all project documents be reviewed by our engineers and that shop drawings be developed by CMI. CMI requires one approved set of shop drawings prior to the start of all fabrication. Glazing contractors providing their own shop drawings shall assume full responsibility and liability for their own work.
- Check the opening to allow a minimum 1/4" at jambs, head, and sill so that the frame may be properly plumbed and squared.
- Apply sealant to the ends of all intersecting horizontal & vertical framing members prior to assembly. Assemble frames by applying screws through the horizontal members into the pre-mounted shear blocks on the vertical members, wherever screw spline assembly is not possible.
- Install frame, properly shimming with non-corrosive or non-deteriorating shim material, to a plumb and square position. Use screws of adequate size and length to fasten frame into the opening, through the perimeter gutter. Apply a continuous perimeter bead of sealant at interior and exterior side of main frame.
- Install lock-in gasket in all main frame members and face cap pieces prior to glazing. Water diverter is required at all intermediate horizontals and must be rotated into place prior to glazing.
- Rotate setting pads into position at quarter points and apply setting blocks.
- Set and properly position glass in main frame. Snap thermal separators into position at 12" o.c.
- Apply face cover by aligning engagement leg into previously applied thermal separators and snapping into position.

NOTE: PER INDEPENDENT LABORATORY TESTING; CMI REQUIRES BOTH INTERIOR AND EXTERIOR PERIMETER FRAME SEALANT TO MEET SPECIFIED PERFORMANCE.



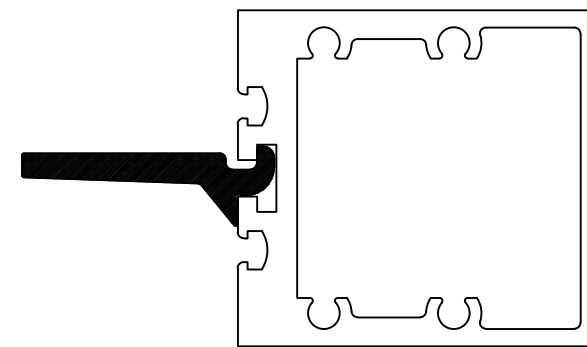
WATER DIVERTER 10-155

-REQUIRED ON ALL INTERMEDIATE HORIZONTALS
-ROTATE TO INSTALL (FRICTION FIT) PRIOR TO INSTALLING LITE OF GLASS BELOW DIVERTER



SETTING PAD 10-035

-FOR ALL GUTTERS & STANDARD MULLIONS
-ROTATE TO INSTALL (NO FASTENERS REQUIRED)
-USE 19-030 SETTING BLOCK



SETTING PAD 10-034

-FOR HORIZONTAL STRUCTURAL GLAZED MULLIONS
-SLIDE FIT DURING FRAME FABRICATION
-USE 19-030 SETTING BLOCK



HQ + MANUFACTURING
20621 HWY 25 N.
DESMET, SOUTH DAKOTA 57231
TOLL FREE: 800-324-2070
PHONE: (605) 854-3326
FAX: (605) 584-3620

SALES + ENGINEERING
1630 101ST AVE NE, SUITE 130
BLAINE, MN 55449
TOLL FREE: 800-334-1533
PHONE: (763) 560-5567
FAX: (763) 560-6399

MANUFACTURING
57135 WOODHOUSE DR.
DOWAGIAC, MI 49047
PHONE: (269) 782-0299

WWW.CMIARCH.COM

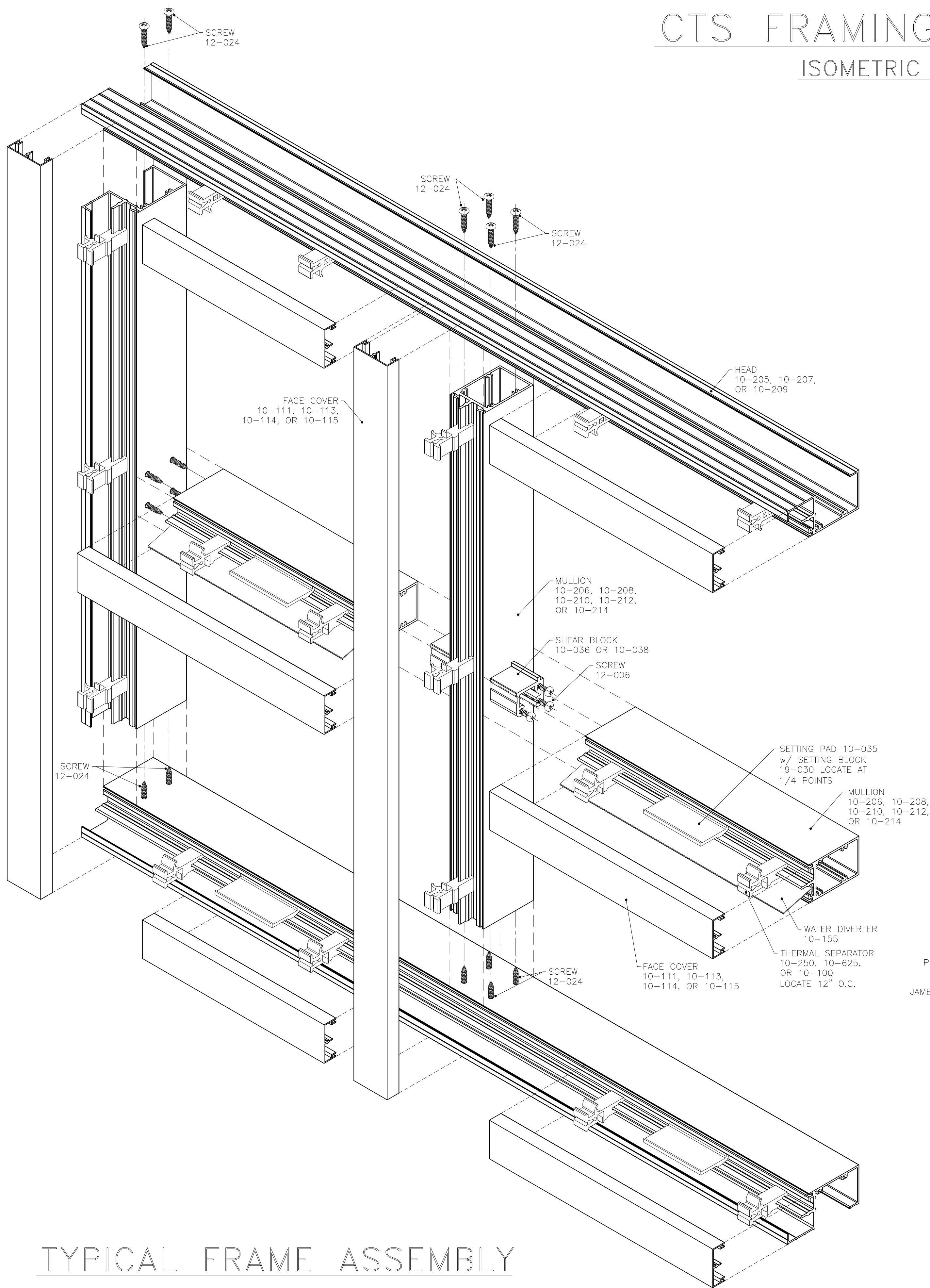
CTS FRAME ASSEMBLY

SHEET #:

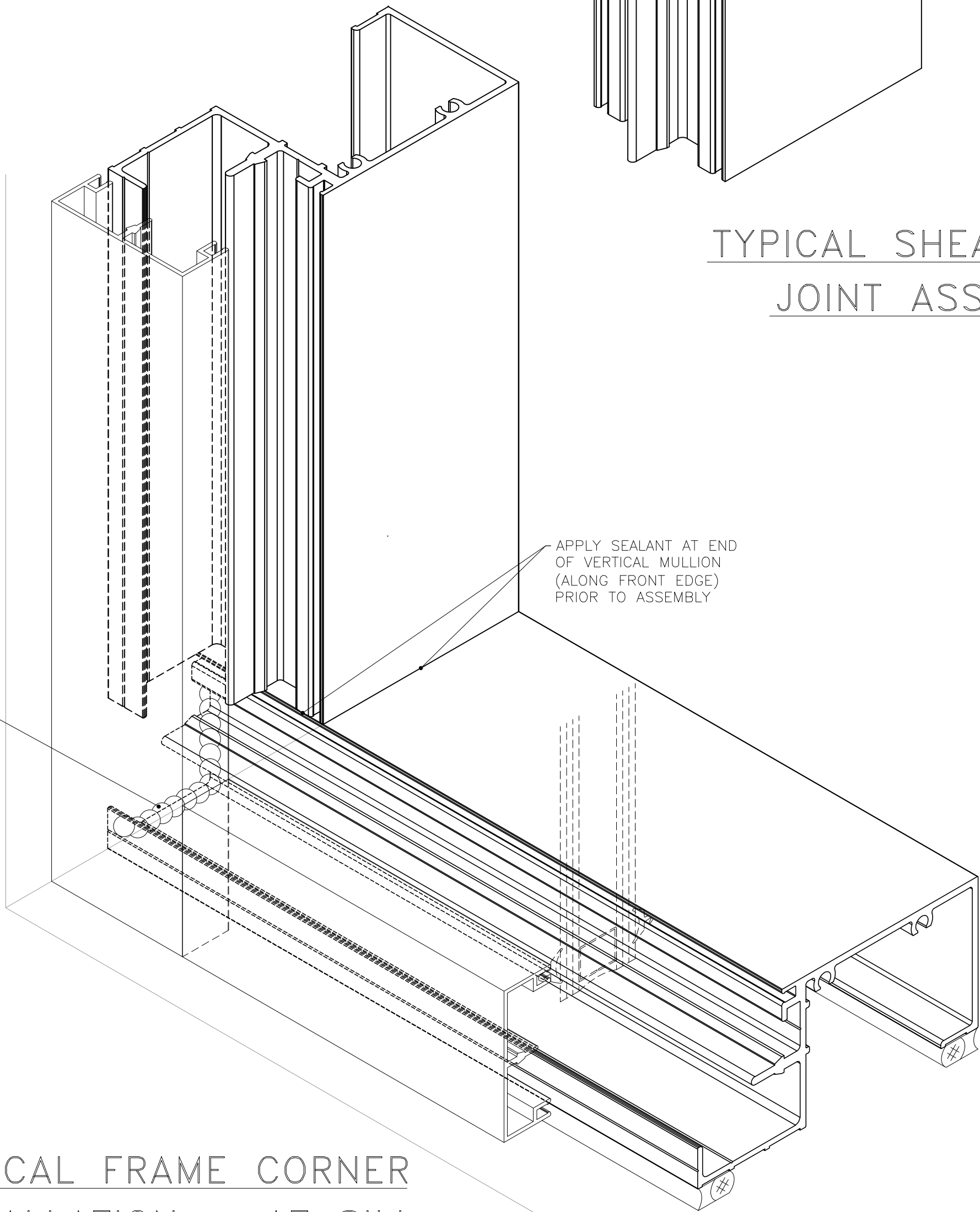
CTS - 1

UPDATED: JANUARY 20, 2023

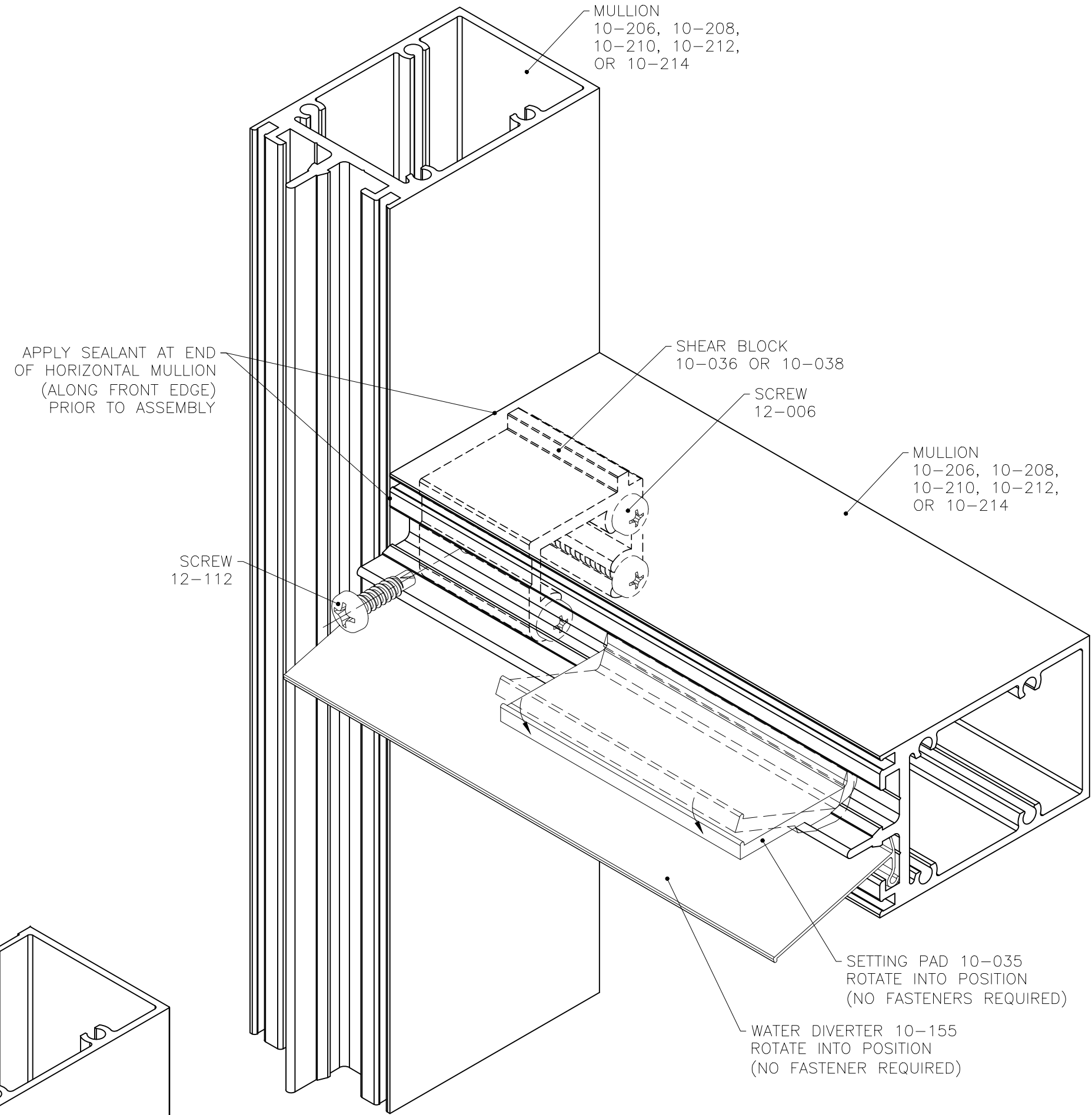
CTS FRAMING ASSEMBLY
ISOMETRIC DETAILS



TYPICAL FRAME ASSEMBLY



TYPICAL FRAME CORNER
INSTALLATION – AT SILL



TYPICAL SHEAR BLOCK
JOINT ASSEMBLY



HQ + MANUFACTURING
20621 HWY 25 N.
DESMET, SOUTH DAKOTA 57231
TOLL FREE: 800-324-2070
PHONE: (605) 854-3326
FAX: (605) 584-3620

SALES + ENGINEERING
1630 101ST AVE NE, SUITE 130
BLAINE, MN 55449
TOLL FREE: 800-334-1533
PHONE: (763) 560-5567
FAX: (763) 560-6399

MANUFACTURING
57135 WOODHOUSE DR.
DOWAGIAC, MI 49047
PHONE: (269) 782-0299

WWW.CMIARCH.COM

CTS FRAME ASSEMBLY

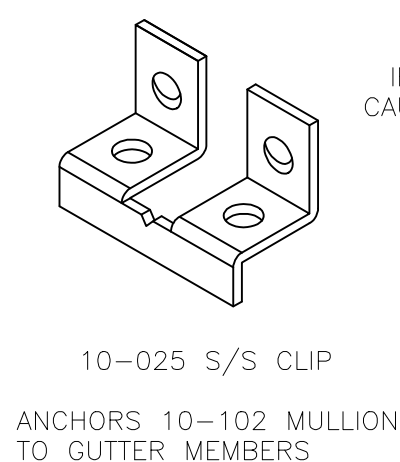
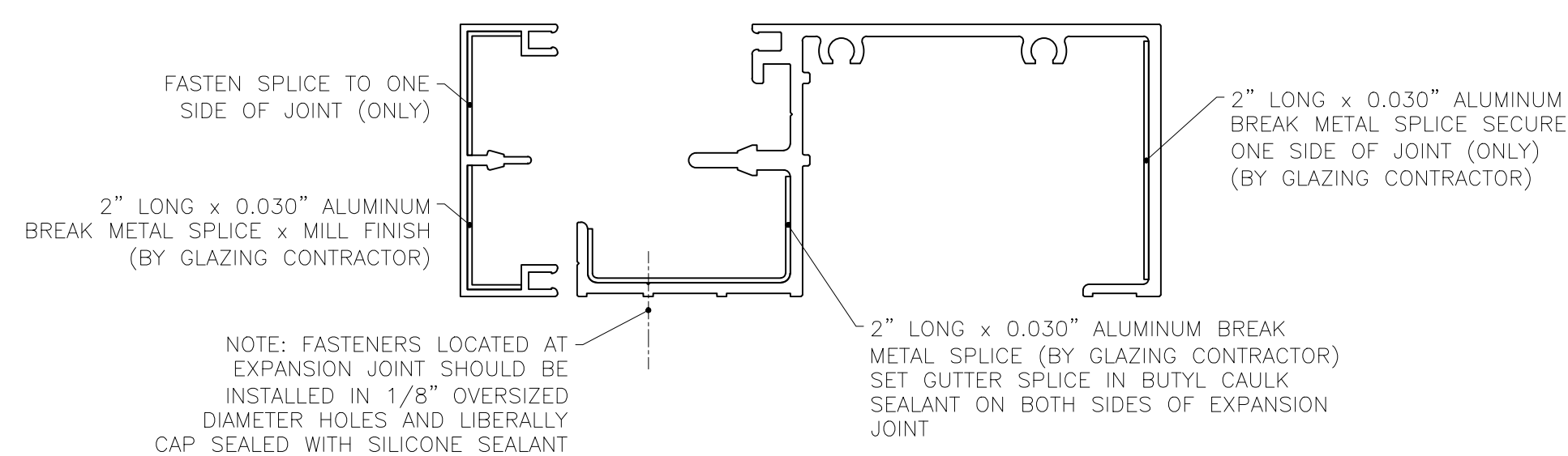
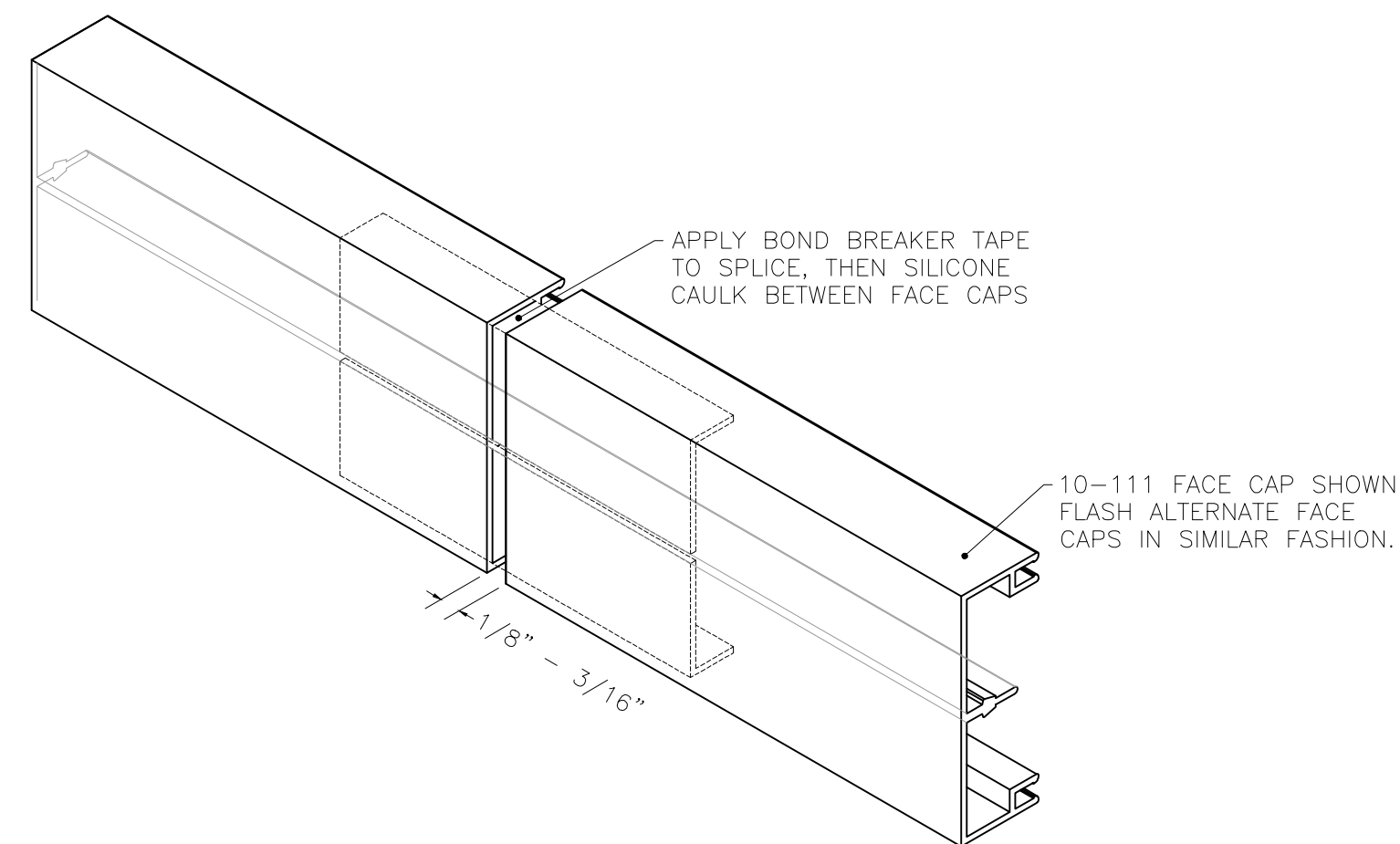
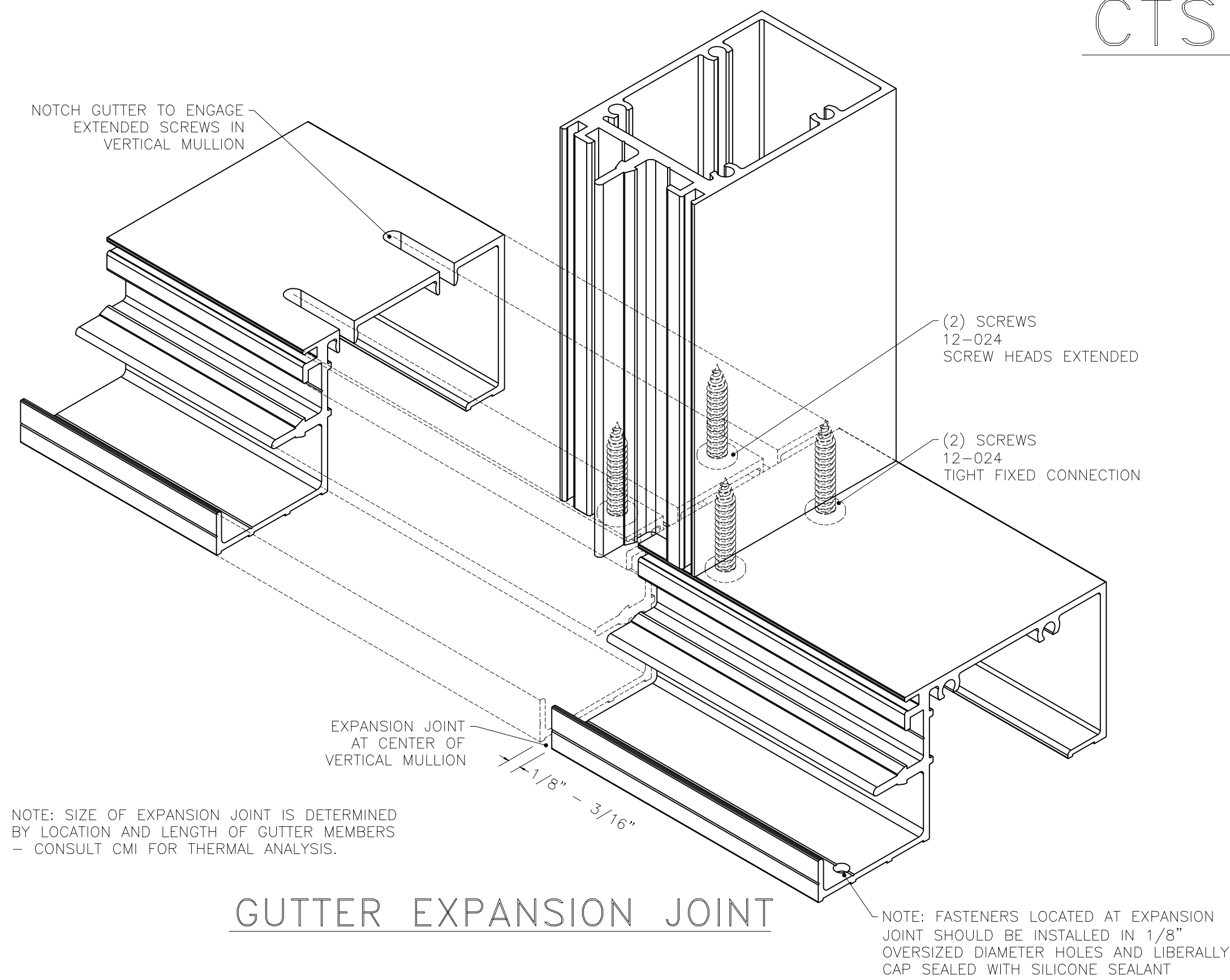
SHEET #:

CTS - 2

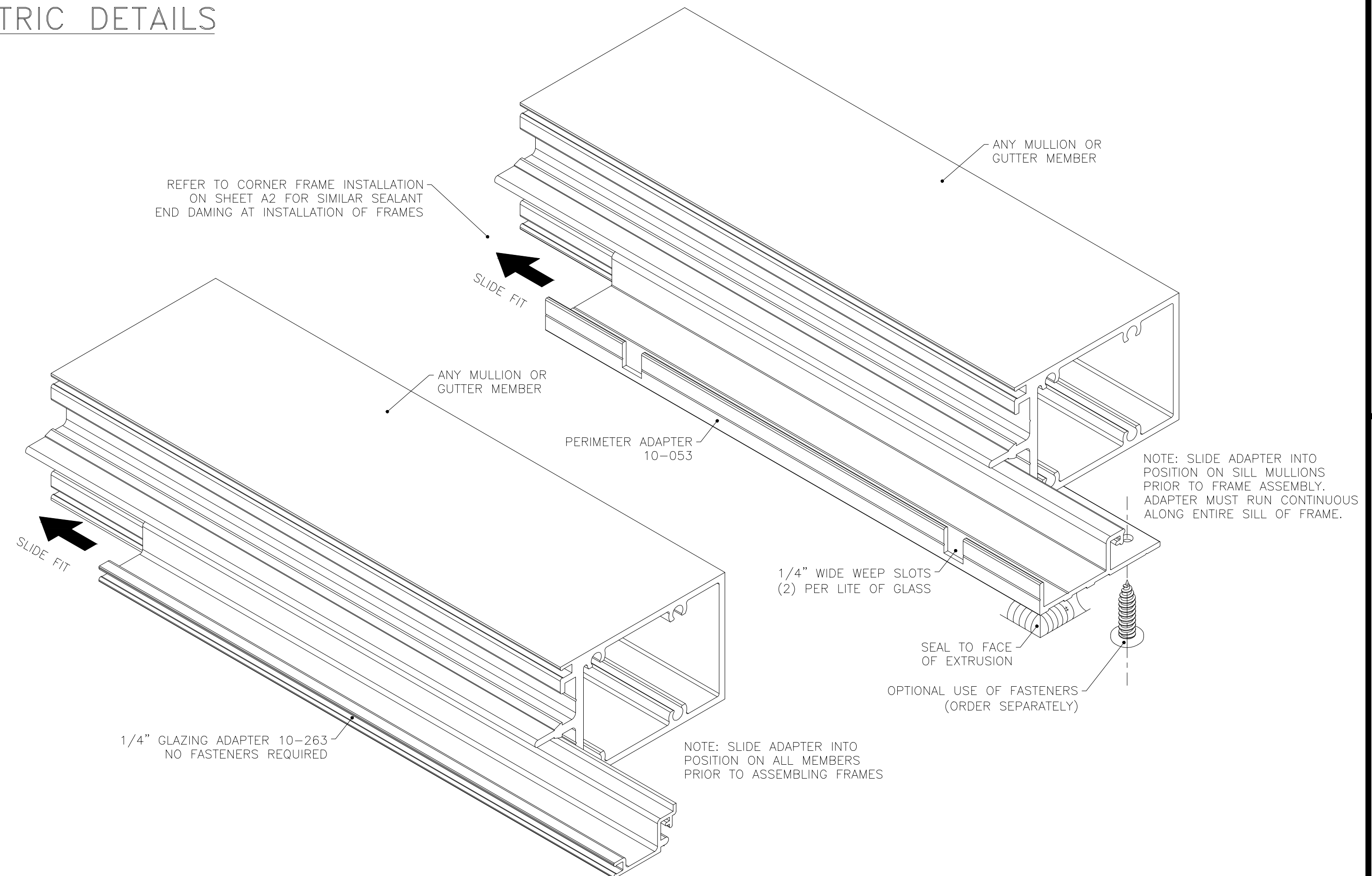
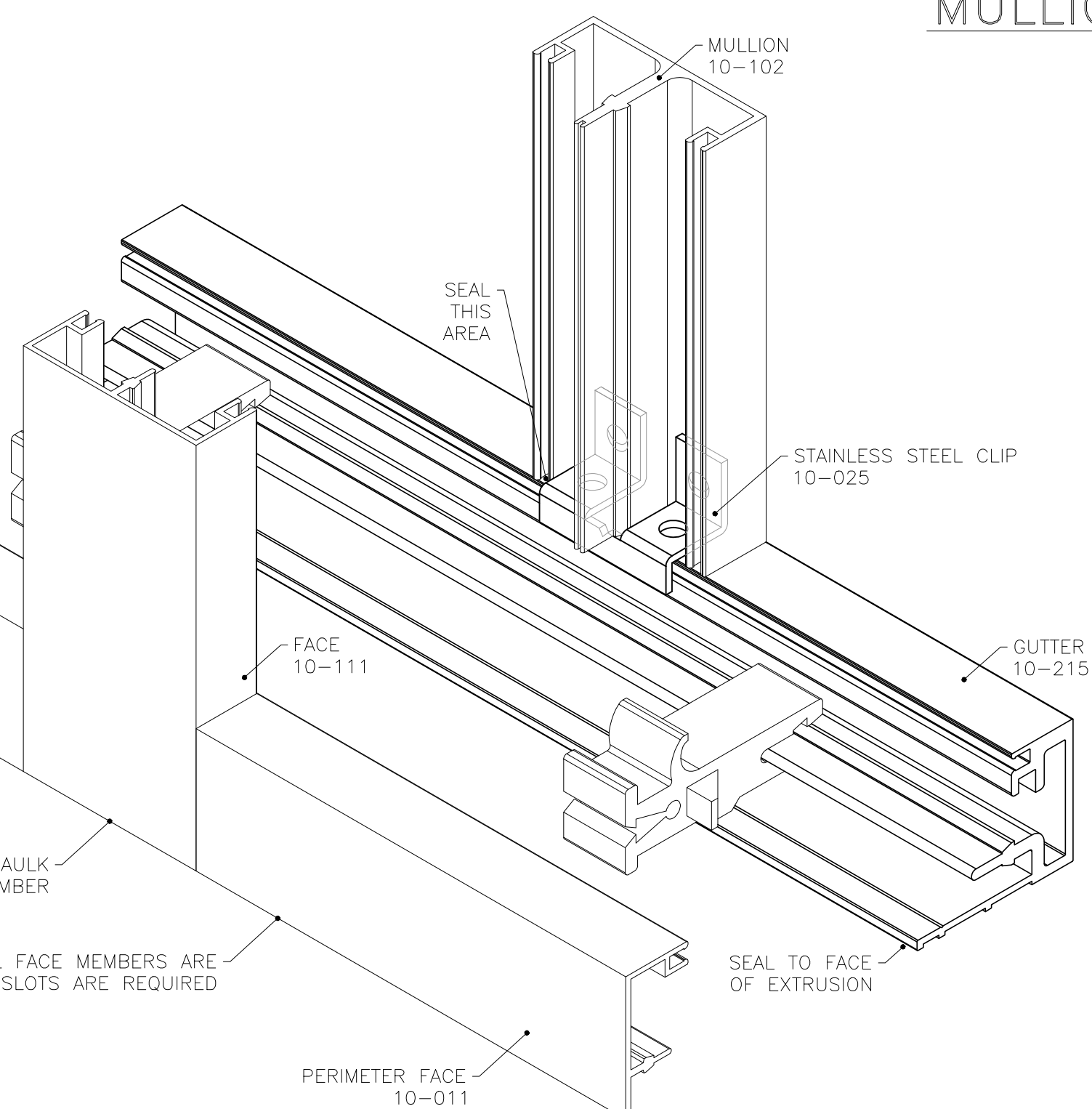
UPDATED: JANUARY 20, 2023

CTS FRAMING ASSEMBLY

ISOMETRIC DETAILS



10-102 MULLION ATTACHMENT TO CONTINUOUS GUTTER



HQ + MANUFACTURING
20621 HWY 25 N.
DESMET, SOUTH DAKOTA 57231
TOLL FREE: 800-324-2070
PHONE: (605) 854-3326
FAX: (605) 584-3620

SALES + ENGINEERING
1630 101ST AVE NE, SUITE 130
BLAINE, MN 55449
TOLL FREE: 800-334-1533
PHONE: (763) 560-5567
FAX: (763) 560-6399

MANUFACTURING
57135 WOODHOUSE DR.
DOWAGIAC, MI 49047
PHONE: (269) 782-0299

WWW.CMIARCH.COM

CTS FRAME ASSEMBLY

SHEET #:

CTS - 3

UPDATED: JANUARY 20, 2023