



UFP CONSTRUCTION

# CONSTRUCTION



**UFP** CONSTRUCTION

A UFP INDUSTRIES COMPANY

UFP Construction is the leading provider of concrete forms, building components, wood and steel framing, exterior and interior finishing products, which are all designed to make the construction process coordinated and simple.

- SITE BUILT
- FACTORY BUILT
- CONCRETE FORMING
- COMMERCIAL



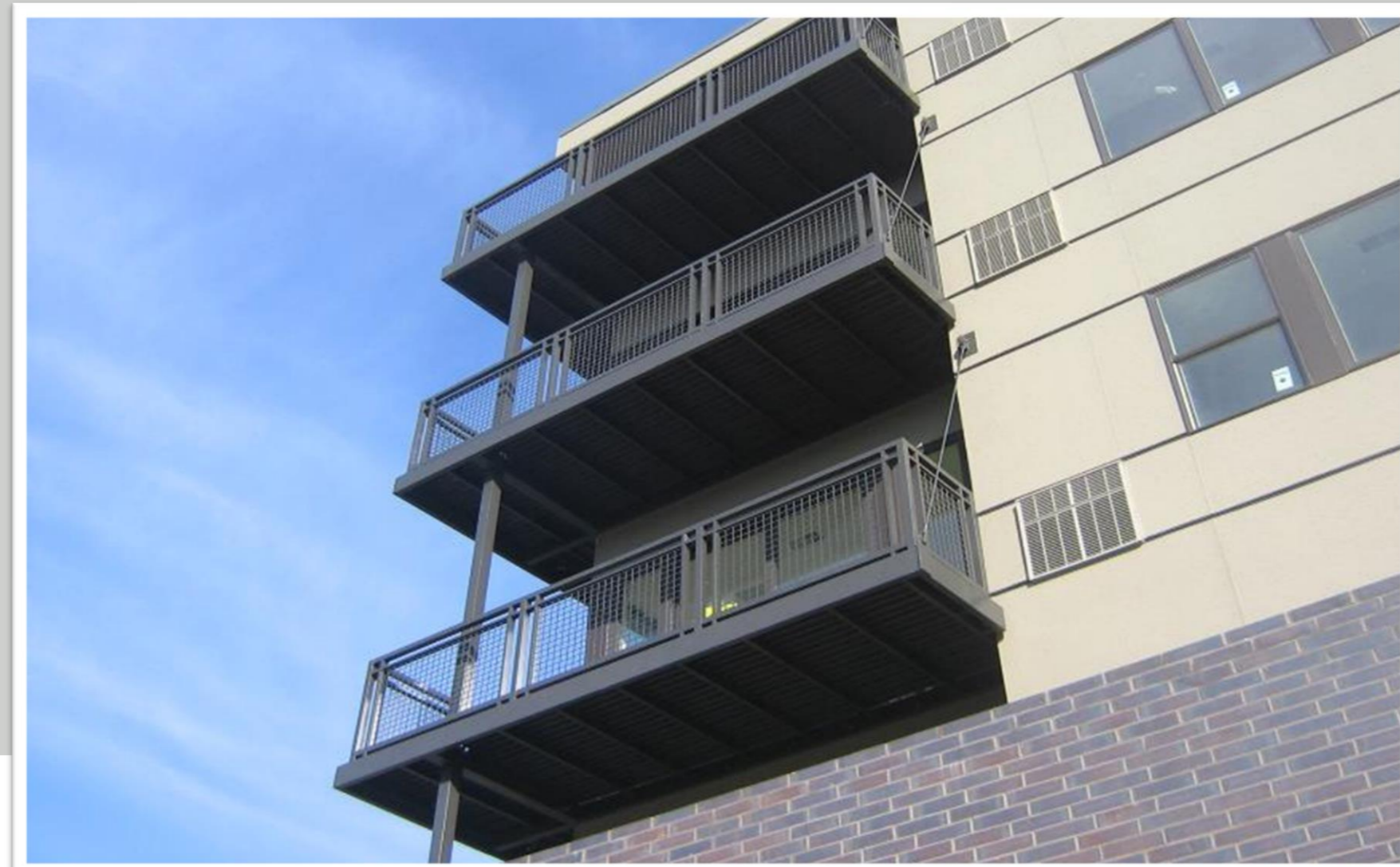


BUSINESS SEGMENTS

# CONSTRUCTION

## ENDURABLE BUILDING PRODUCTS

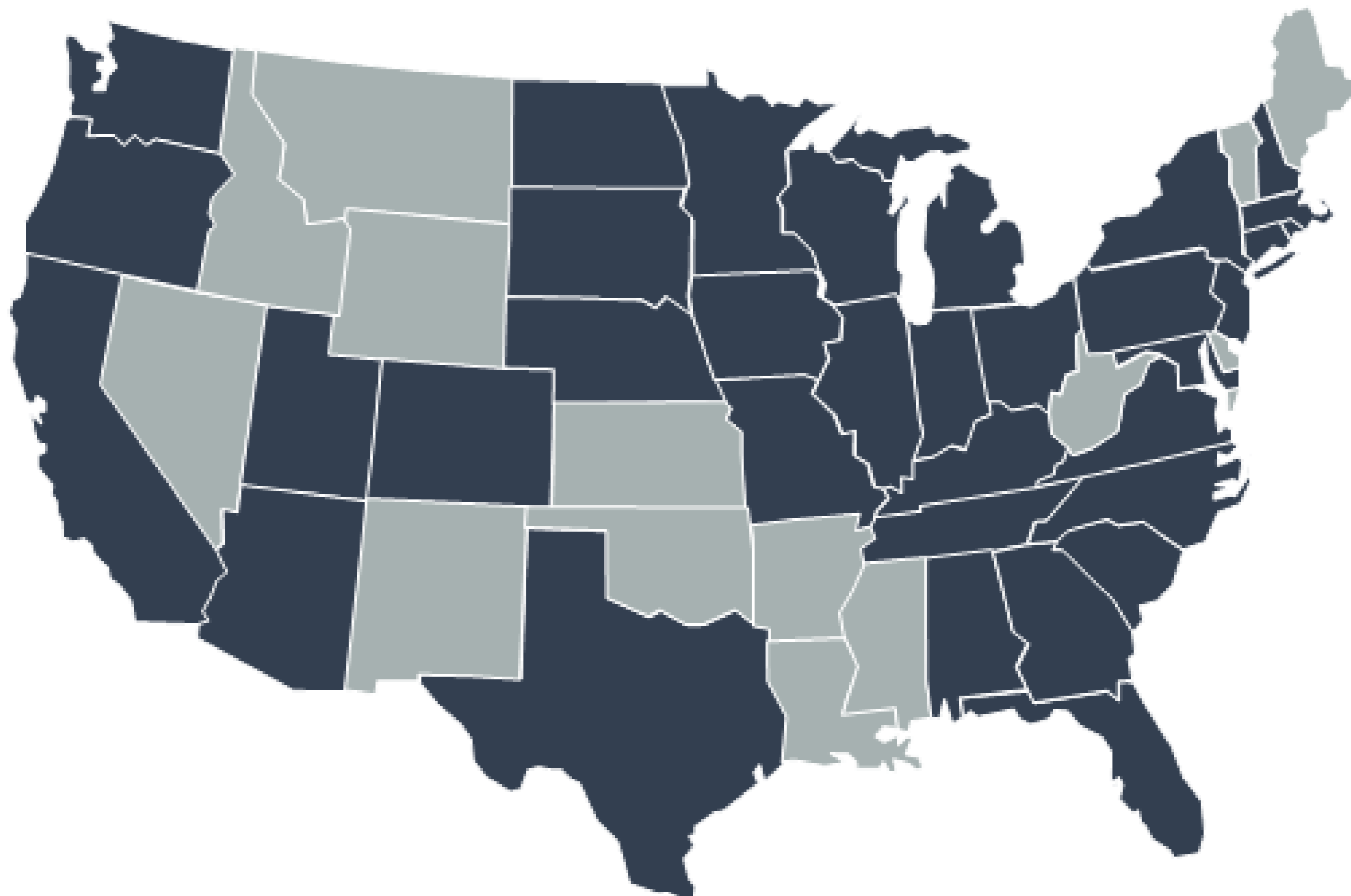
A recent addition to the UFP family, Endurable Building Products manufactures aluminum balconies, railings, sunshades, canopies and other architectural products for multifamily new construction and renovation projects.



# Background

- Endurable was launched in 2004 as a spin-out from Athletica, a hockey board company
- Initial focus on both single and multifamily projects including Home Depot distribution
- Focused switched primarily to multifamily in 2009
- Over 30,000 balconies installed in more than 36 states across the country
- New construction and renovation projects
- Based in Minneapolis
- Acquired in 2021 by UFP Industries

# Endurable Installations



Endurable Project Experience



# Products we sell



# Typical Aluminum Pre-Fabricated Balcony

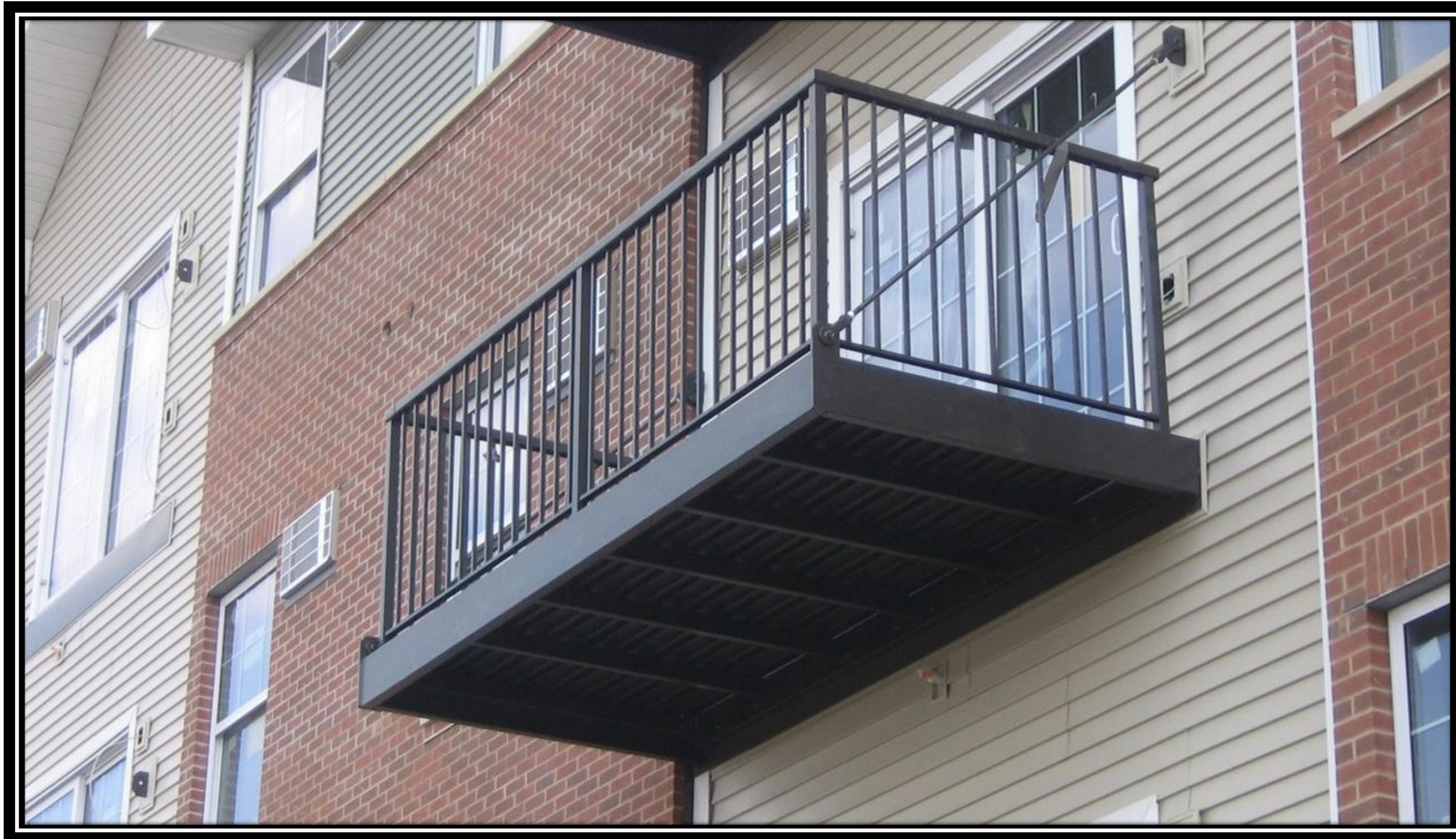
- **Balcony Frame**
  - Typical tube frame with joists
  - Typical single piece fully welded construction
  - Alternative frame – C Channel
- **Balcony Floor**
  - Water-tight aluminum decking
  - Alternate - composite decking
  - Alternate – solid one-piece flooring
- **Attachment to the building**
  - Direct lag bolt through the frame (wood and concrete only)
  - Knife plates
  - Outriggers

# Benefits of Our Aluminum Balcony Systems

- **Less weight**
  - Less than 1/3 vs. steel frame
  - Less load on structure, no unusual framing required
- **Low maintenance**
  - powder coated aluminum will not have rust issues
- **Installation is quick**
  - GCs have installed as many as 30 complete units in a day
  - Allows the GC to complete exterior before installation
- **Full turnkey service**
  - Designed for your building
  - Fully engineered
  - Integrated railings



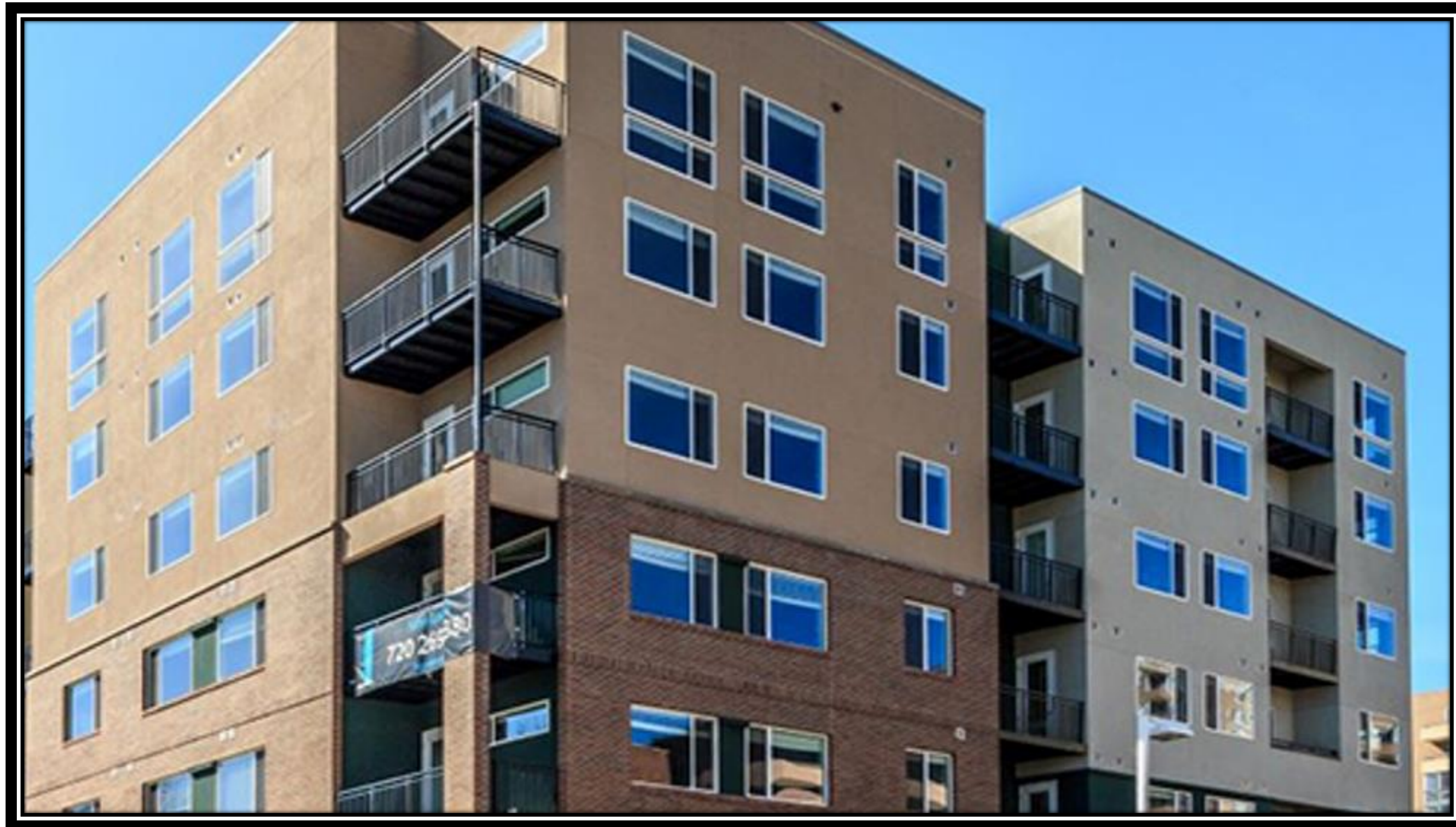
# alumiLAST® Balcony Supported with Stainless Steel Rods



# alumiLAST® Balconies with Glass Railing



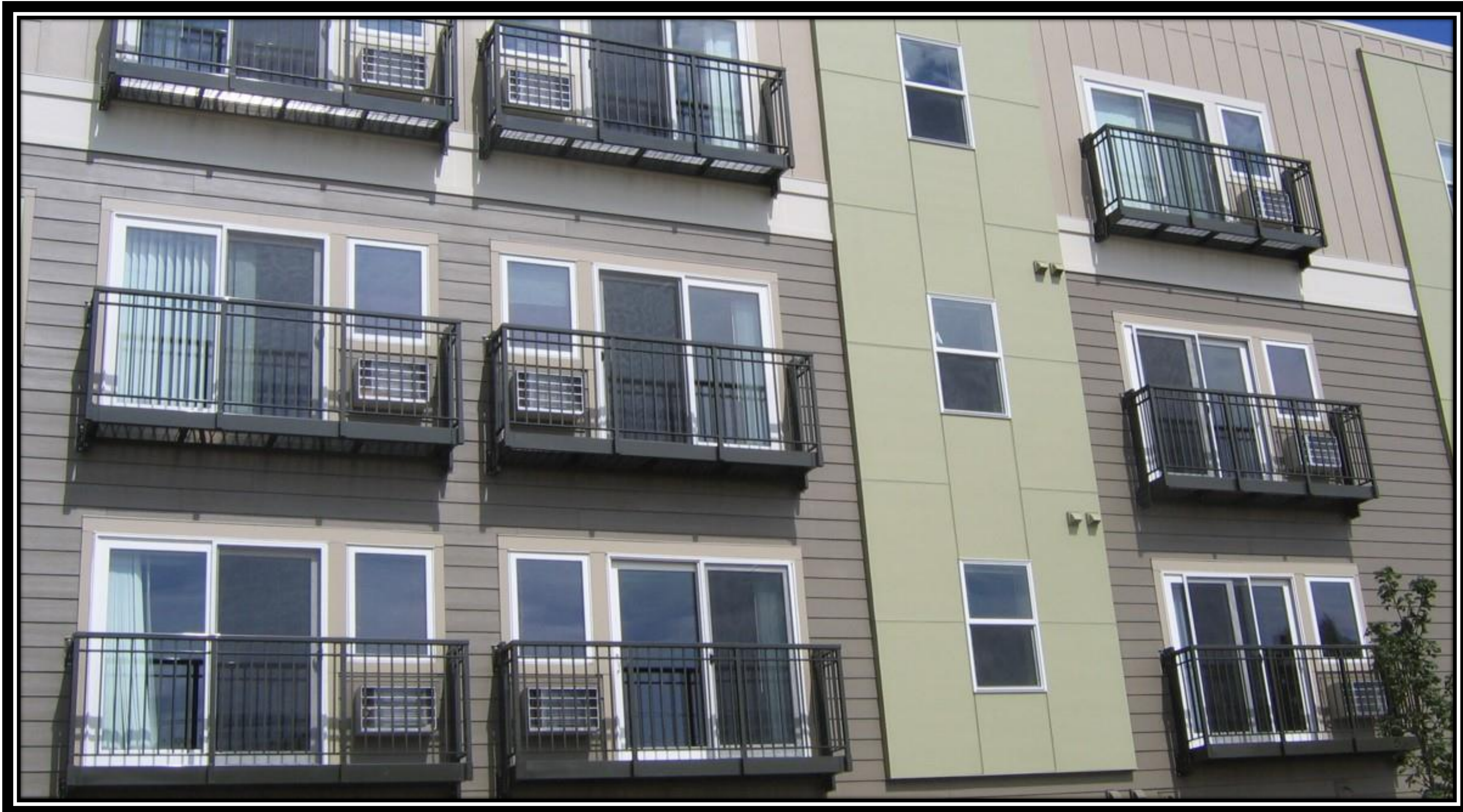
# Inset and Post Supported Balconies



# High-Rise Building with Outrigger Supported Balconies



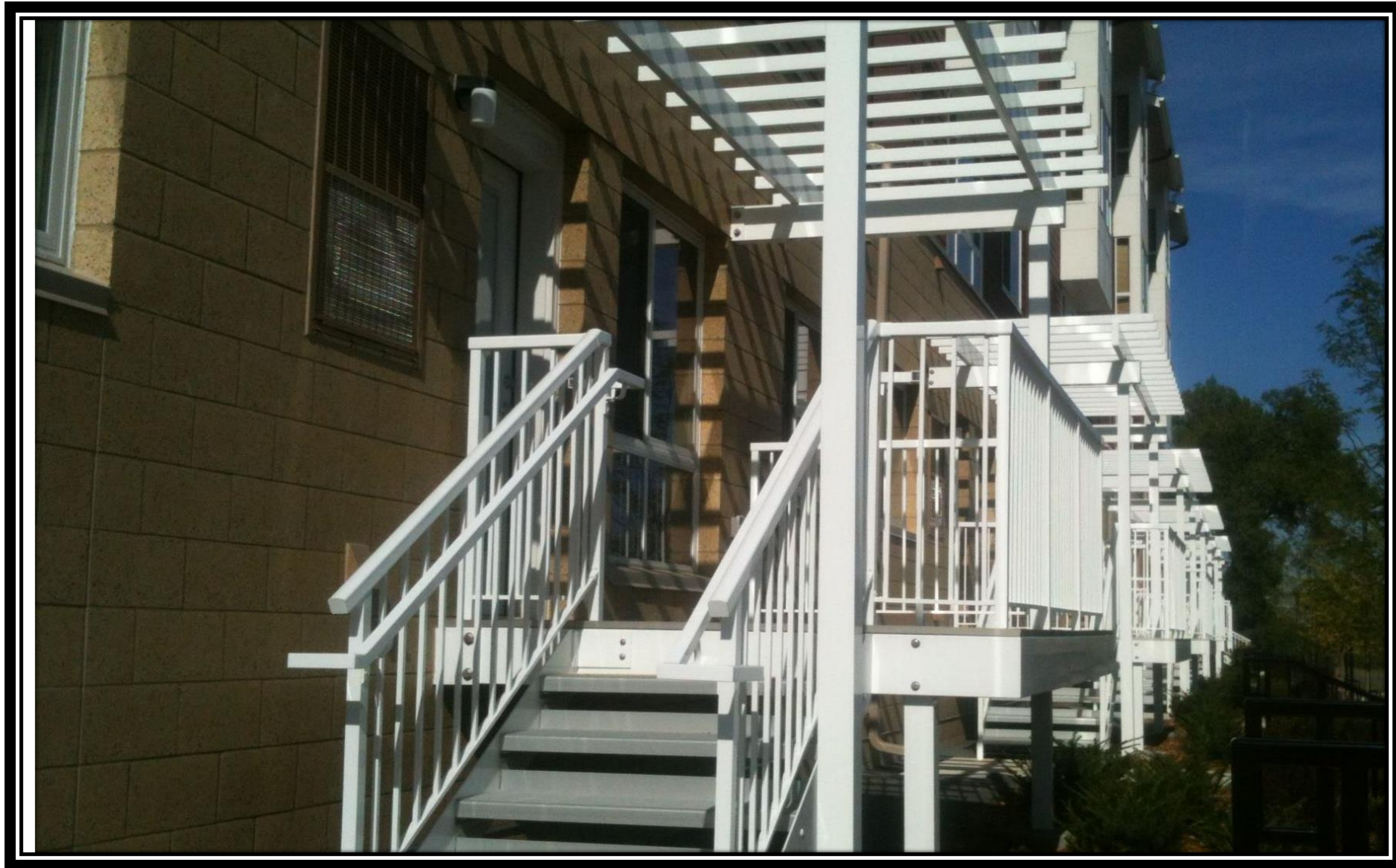
# French Balconies with Aluminum Grating



# Stairs and Walkways



# Balcony with Stairs and Pergola



# Rooftop Deck





# alumiLAST® Sunshades



# Renovation Example

Before



After



# Typical Tie Rod Knife Plate Connections

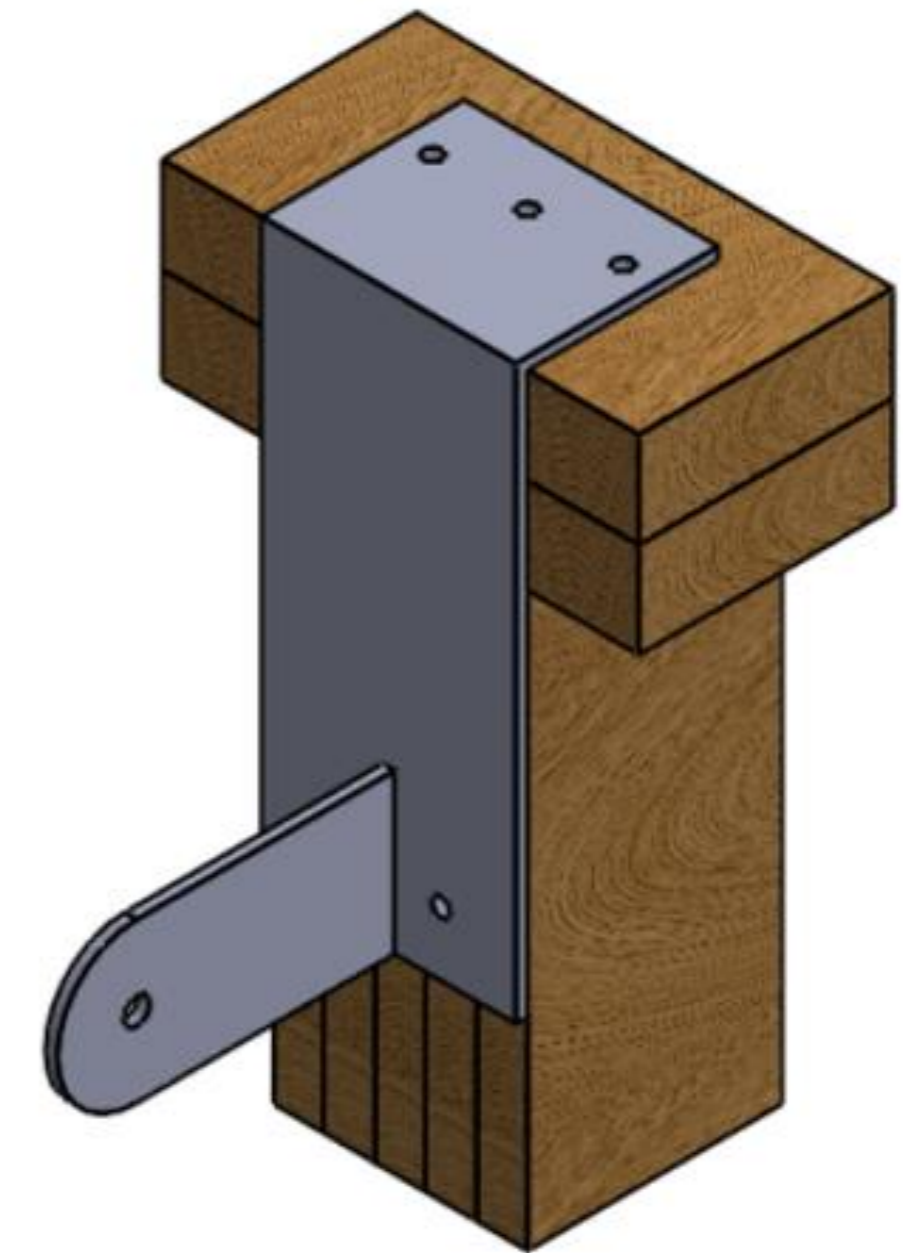
Face Mount



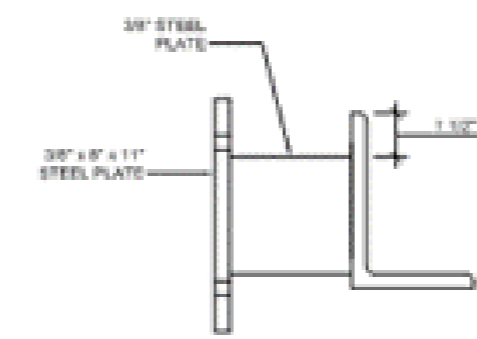
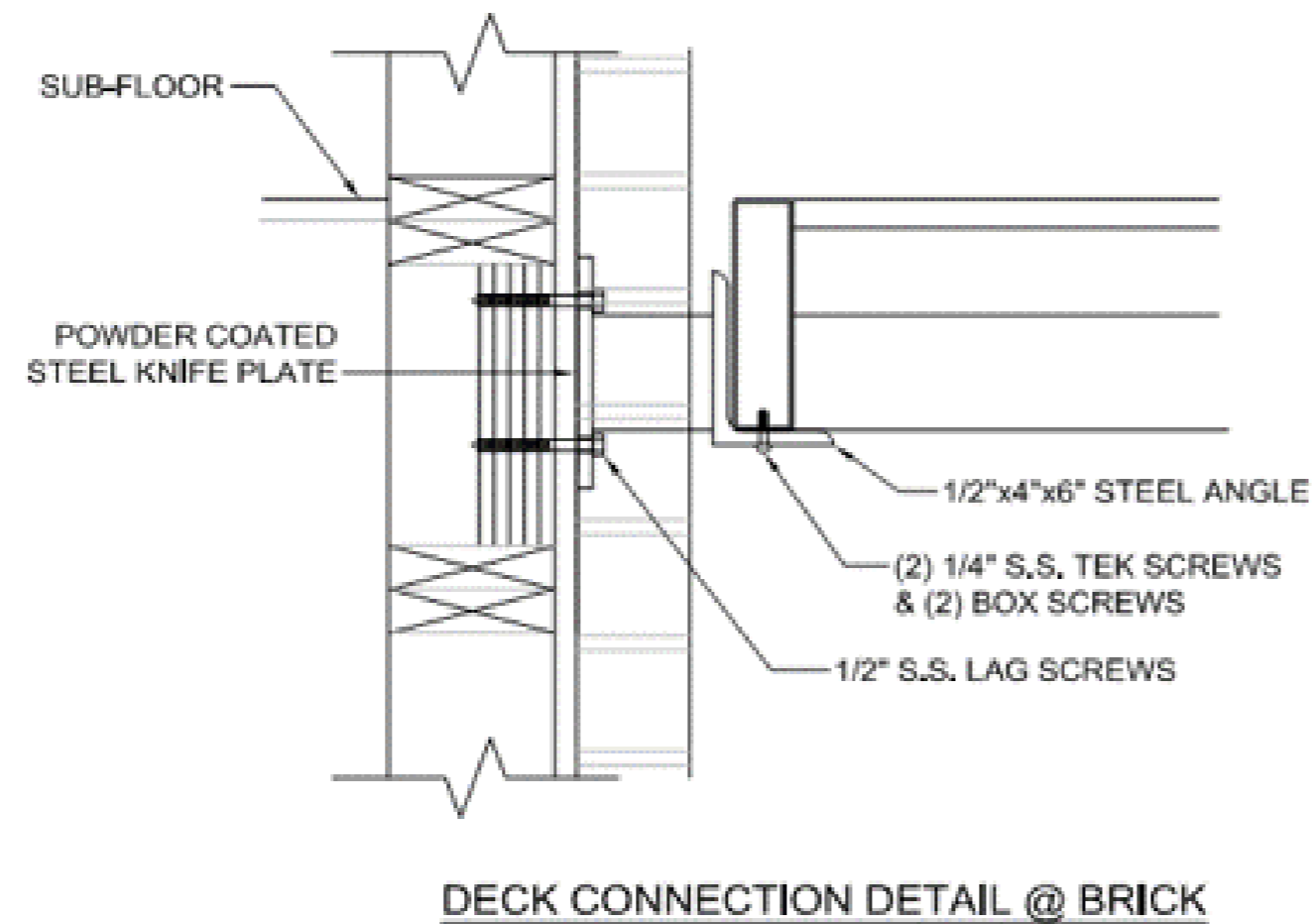
T Blade



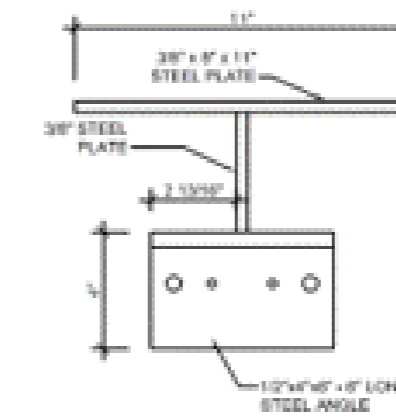
Over The Wall



# Typical Balcony Connections

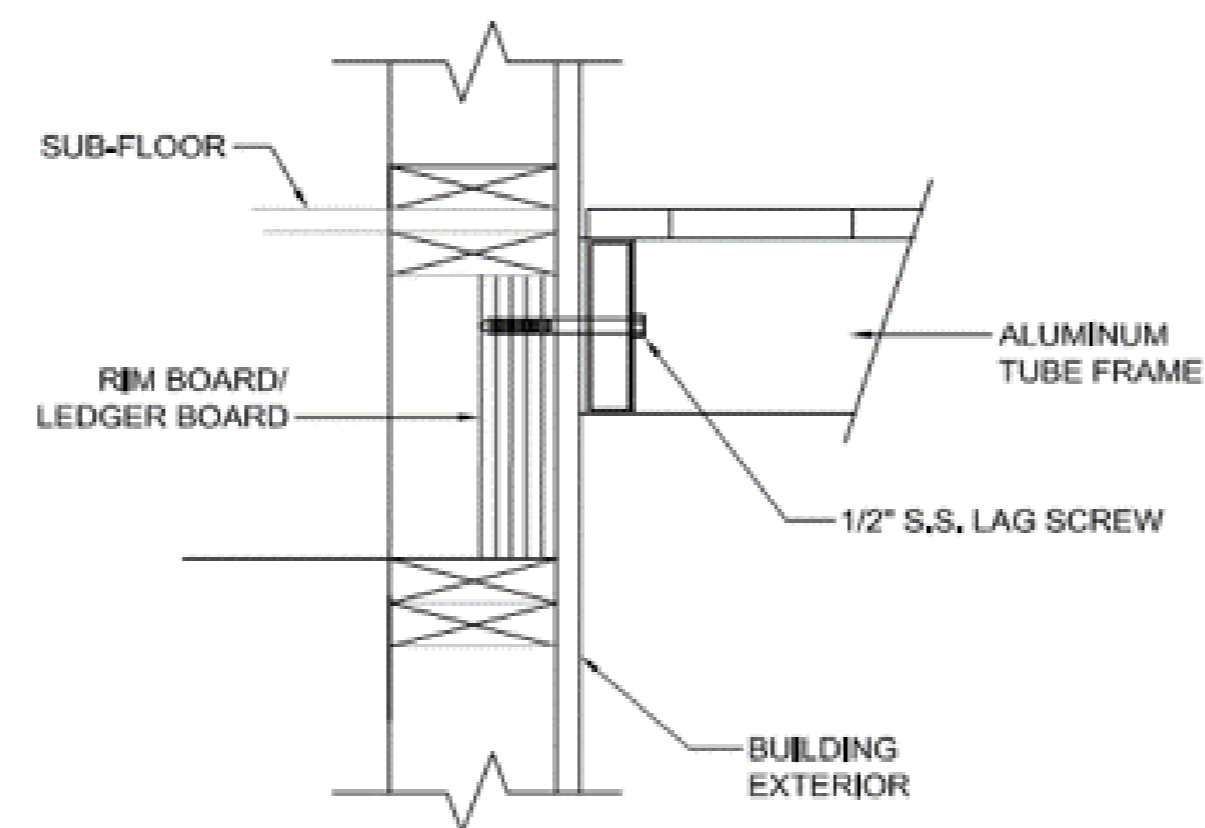


FRAME KNIFE PLATE SIDE VIEW



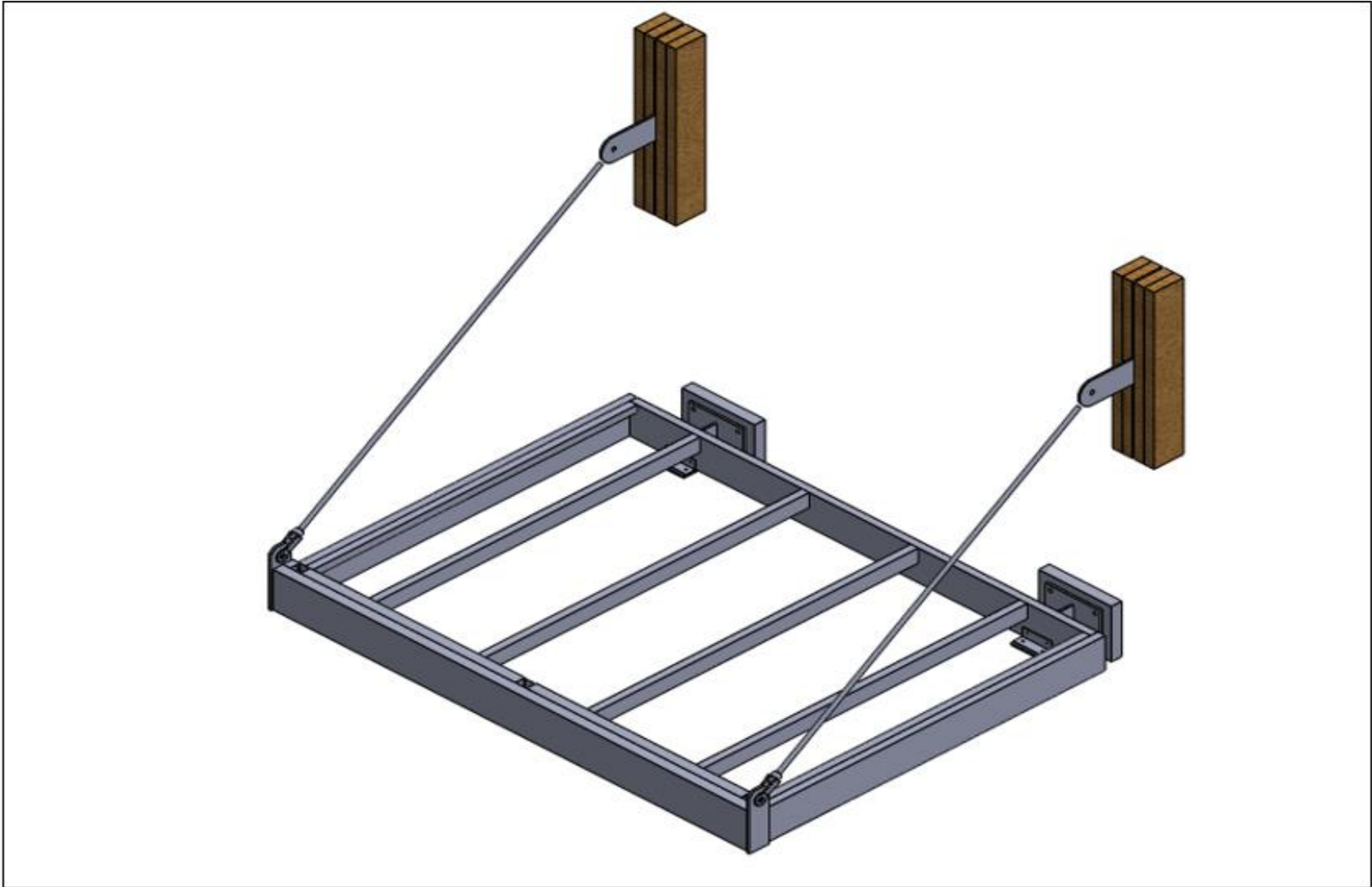
FRAME KNIFE PLATE TOP VIEW

**1** DECK FRAME KNIFE PLATE DETAIL  
DCD QTY: -  
UNITS:

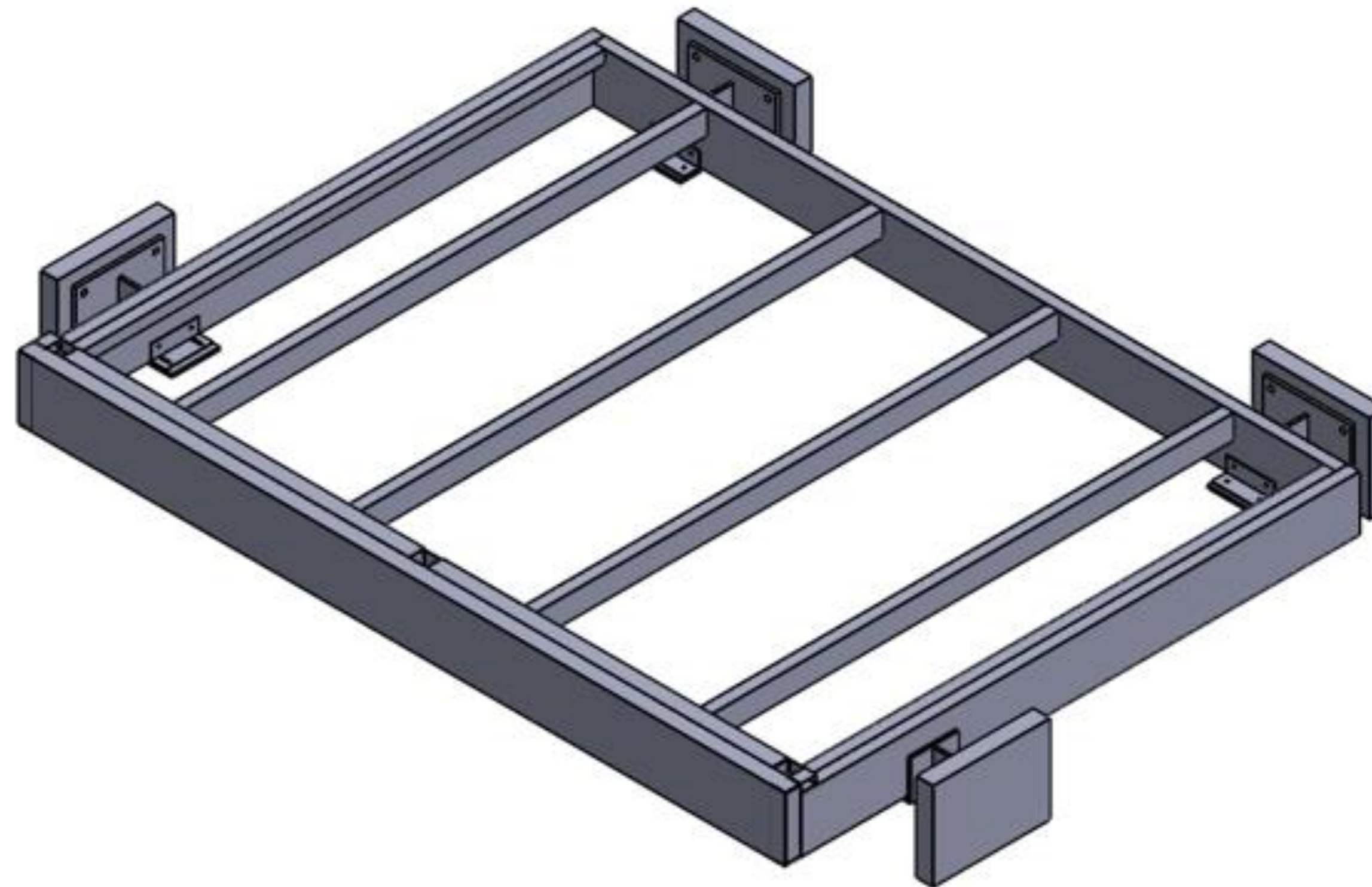


**2** DECK FRAME CONNECTION DETAIL  
DCD QTY: -  
UNITS:

# Balcony Supported with T-Blades, Rods and Seat Plates



# Inset Balcony Supported with Seat Plates



# Why Endurable?

- **Low maintenance**
- **Packaged product (decks, rails, engineering)**
- **Custom designed by project**
- **Multiple color and design options available**
- **Easy to install**
- **Engineering for all 50 states**
- **Field assistance available**
- **Low overall cost**



BUSINESS SEGMENTS

# CONSTRUCTION

## SITE BUILT

Roof trusses, wall panels, floor systems, doors and framing services for residential and multifamily builders.







BUSINESS SEGMENTS

# CONSTRUCTION

## ATLANTIC PREFAB

Atlantic Prefab specializes in the design and fabrication of prefabricated building components & systems. A.P.I.'s product line-up includes: Pre-Engineered Cold-Formed Steel Truss Systems, Exterior Envelope Panels, Pre-Finished Exterior Wall Panels, Load Bearing Wall Panels, and Custom Modular Units such as Cupola's, Dormers, and more.





BUSINESS SEGMENTS

# CONSTRUCTION

## FACTORY BUILT

Roof trusses, floor joists, laminated wall panels, cabinet components, countertops and milled components for the modular and manufactured home, RV and mobile office.





BUSINESS SEGMENTS

# CONSTRUCTION

## CONCRETE FORMING

Prefabricated formwork, shearwalls, custom radius forms, column forms, gang deck systems, wall panels. Wholesale distribution, rental formwork as well as custom design, engineering and CNC detail delivered to the jobsite ready to build.





BUSINESS SEGMENTS

# CONSTRUCTION

## DOORS, TRIM & HARDWARE

Turnkey finish carpentry including doors, baseboard, crown moulding, chair rail, wainscot, door hardware, and bath accessories complete with on-site, field managed installation.





BUSINESS SEGMENTS

# CONSTRUCTION



Full-service, turnkey project management of consumer environment and architectural interiors: Design, development, engineering, manufacturing, assembly, distribution and installation.





UFP CONSTRUCTION

# CONTACT INFORMATION

## ATLANTIC PREFAB

Chip Fleming

[chip.fleming@ufpi.com](mailto:chip.fleming@ufpi.com)

678.699.4905

[www.atlanticprefab.com](http://www.atlanticprefab.com)

## ENDURABLE BUILDING PRODUCTS

Ben Swenson

[bswenson@endurable.com](mailto:bswenson@endurable.com)

612.275.4739

[www.endurable.com](http://www.endurable.com)

## CONCRETE FORMING

Jason Croy, VP Concrete Forming

[jcroy@ufpi.com](mailto:jcroy@ufpi.com)

951.232.4199

[www.ufpconcrete.com](http://www.ufpconcrete.com)

## MILLWORK & CASEWORK

Bill Delaney, VP of Business Development

[william.delaney@idxcorporation.com](mailto:william.delaney@idxcorporation.com)

843-849-8715

[www.idxcorporation.com](http://www.idxcorporation.com)

## DOORS, TRIM & HARDWARE

Johnny Ghee, National VP Multifamily

[jghee@ufpi.com](mailto:jghee@ufpi.com)

252.256.0819

[www.ufpi.com](http://www.ufpi.com)

## MULTIFAMILY SITE BUILT

Johnny Ghee, National VP Multifamily

[jghee@ufpi.com](mailto:jghee@ufpi.com)

252.256.0819

[www.ufpi.com](http://www.ufpi.com)



**THANK YOU.**

Johnny Ghee

[jghee@ufpi.com](mailto:jghee@ufpi.com)

National Vice President Multifamily Construction

252-256-0819

[www.ufpi.com](http://www.ufpi.com)

Ben Swenson

Sales Manager

[bswenson@endurable.com](mailto:bswenson@endurable.com)

612-275-4739

[www.endurable.com](http://www.endurable.com)

2801 E. Beltline Ave. NE

Grand Rapids, MI 49506

(800) 598-9663 - UFPI.com

