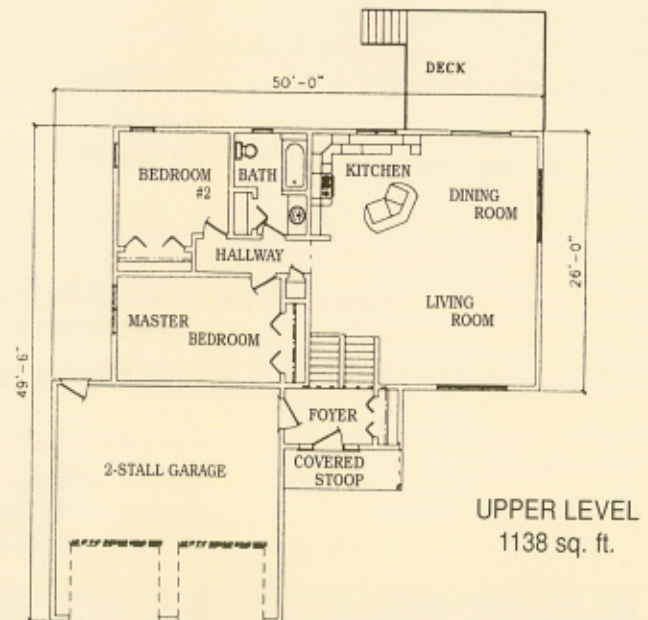
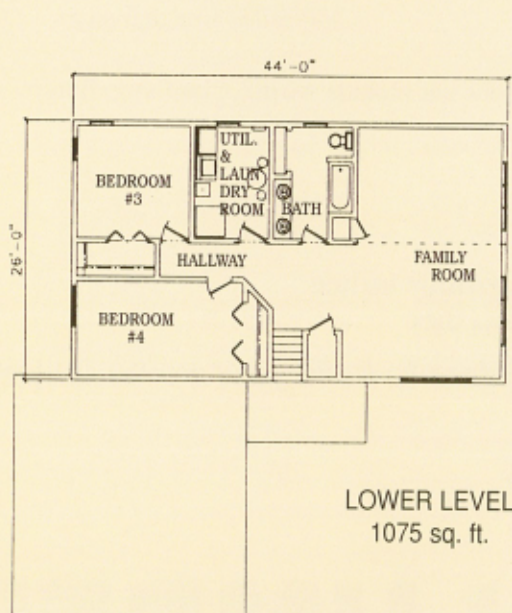




THE HEARTLAND



You enter this well designed split-level house from the weather protected front entry which has an entry door to the double garage. The main floor has an open living, kitchen and dining area with a vaulted ceiling, two bedrooms and a bath. The lower level has a large family room, two bedrooms, bath and utility room.



MERICKEL LUMBER

From Concept to Completion

P.O. Box 471 Wadena, Minnesota • 218-631-3570 • Located 1/4 Mile West on Hwy. 10

THE HEARTLAND

2213 SQUARE FEET - UPPER AND LOWER LEVEL

Materials for The Heartland

house and garage shell \$ 88,750.00

STANDARD FEATURES

Upper and Lower Levels

2x6 wood foundation
2x6 exterior walls
Engineered floor and roof trusses
Certainteed Vinyl Siding
Marvin Clad Low E insulated glass windows
Clad entrance and garage door frames
Rollex aluminum soffit and fascia
GAF Prestique Lifetime laminated shingles

Material to finish interior

Upper level 13,290.00
Lower level 9,970.00
R21 wall insulation
R50 value ceiling insulation
Oak doors and trim
Sheetrock walls and ceiling
Sheetrock and insulation for garage

Medallion Columbia Oak kitchen & bath cabinets
with soft-close doors & drawers
postformed laminate countertop for kitchen
cultured marble vanity tops..... 9,570.00

Total for above materials 121,580.00

SHELL OPTIONS

To Change To:

Versetta Stoneadd 5,630.00
Cedar deck.....add 4,710.00
Timber Tech composite deck.....add 10,950.00
Treated Deckadd 1,830.00

FINISH INTERIOR OPTIONS

To Change To:

6 panel oak doorsadd 4,300.00
Prefinished 6 panel doors & trim..add 8,180.00
Armstrong Laminate flooringadd 5,040.00
Kitchen/Dining

Blueprints per set \$800.00

Custom modifications to plan \$500.00

Will be refunded with the purchase of shell materials

Custom plans also available

400 miles free delivery

*does not include wiring, plumbing, fixtures or labor

PRICES SUBJECT TO CHANGE WITHOUT NOTICE

Above Prices Are Materials Only

Let us recommend professional licensed contractors to build your home on your site.



MERICKEL LUMBER

Building Better Together

P.O. Box 471 Wadena, Minnesota 56482-0471

Phone: 218-631-3570 • Toll-Free Phone: 800-225-3570 • Fax: 218-631-3572

Website: www.merickellumber.com

E-mail: mli@merickellumber.com