

OUR EVENTS: MCC SERVICE SEMINARS

Thanks for Attending!

Thank you to all our customers and vendors who joined Minnesota Chemical and its staff for our fall free laundromat and OPL shows/service seminars in MN and WI!

These free events are of great value to all who attend. We all learn from each other. Special discounts were available to attendees. Industry experts from Minnesota Chemical, Huebsch, Standard Changemakers, Vend-Rite, American Changer, and more presented what's new in the industry.

Huebsch and Minnesota Chemical presented tips on preventative maintenance, technical support and troubleshooting, and, on the vended side, coin laundry store management tips. Most importantly, we had a great Q&A session with customers to learn about our customers' needs and questions, and to help them make their laundries better.

Thank you again to all who attended, and to those who were unable to attend this time: please watch our calendar for the next event in 2023!



Alliance Laundry Systems' Terry Brousseau demonstrates the latest Galaxy Touch screen tech



Mark Geis of Vend-Rite



Minnesota Chemical Arden Hills, MN Seminar



Menomonee Falls, WI Seminar



Minnesota Chemical Tech Phillip Hall discusses Milnor Washer service tips

Calendar of Events

December 13 @ 11:00 am - 12:00 pm CST; Coin Laundry Association: "For New Investors: Getting Into the Laundry Business" WEBINAR: Register at <https://www.coinlaundry.org/>

December 14 @ 2:00 pm - 3:00 pm CST; Coin Laundry Association: "AMA (Ask Me Anything) with WDF Experts" WEBINAR: Register at <https://www.coinlaundry.org/>; As more and more stores add wash-dry-fold and pick-up and delivery services to the business, owners are looking for ways to improve their processes and increase revenue.

December 23, 26: Minnesota Chemical CLOSED

Watch for news: <https://minnesotadrycleaners.org/>

Road Trip Idea: Visit Sankosha, see and try out live finishing equipment. Call for appointment (888) 427-9120 www.sankosha-inc.com

3750 Dunlap Street North
Arden Hills, MN 55112
651-646-7521
Toll Free: 1-800-328-5689
Fax: 651-649-1101

13636 Carmen Avenue
Suite 4
Menomonee Falls, WI 53051
262-781-8630

Equipment Department Manager: Mike Baker
Equipment Coordinator: Christine Evenson
Equipment Sales: Daniel Baker, James Baker, Tony Crain, James Riopel
Front Desk: Tina Hinrichs

Service Manager: Ed Jensen
Service Engineers: Dan Elstad, Phil Hall, Andy Putnam, Aaron Brown
Supply Sales: John Sullivan, Chris Schiefelbein, James Riopel
Parts Manager: Barbara Swanson

Warehouse: Bruce Edwards, Warehouse Manager
Purchasing/Accounts Payable/ Supply Department Manager: Chris Schiefelbein
CFO: Kwen Johnson
City Desk: Tina Hinrichs

Parts Direct Line: 651-288-4849 • Service Direct Line: 651-288-4857 • Parts & Service Fax: 651-646-7206

NOW HIRING: FT MAINTENANCE TECH – Call Ed Jensen 651-288-4857

Supply Ideas by Chris Schiefelbein, John Sullivan and James Riopel



Removing Inks with the Stain Wizard

There are about 400 different inks in the market today. Most inks are oil or water-based Ink Dye. The key to successful ink removal is determining if the ink you are working on is wetside or dryside soluble. Gel ink is very difficult, almost impossible to remove.

If you are not sure what type of ink you have, test the ink stain with InkGo or dryside P.O.G. (TarGo Dry or TarGo E.F.) to see if the ink starts to move. If not move to your wetside P.O.G. (Laundry TarGo). If you get down to the last traces of ink, but can't quite get it out, use YellowGo dye remover. YellowGo is designed to remove the last traces of ink dyes. YellowGo training videos are available online at www.ALWilson.com.



The Stain Wizard

Huebsch Laundromat Owners Hotline

We are excited to share Huebsch's new Laundromat Owners Hotline! Huebsch has been monitoring feedback from store owners and has set up a dedicated support line for vended customers to reconnect with the support you have come to expect and deserve.

Please note that to access this service, Huebsch asks that you register your laundromat at huebsch.com/support/ Upon registration, you'll get an email with a number to save in the event that you need to reach the Huebsch technical support teams directly.

Or, as always, you can call Minnesota Chemical at 1-800-328-5689, and we will be happy to assist you, and if needed, add a Huebsch factory tech into a conference call to help assist you.

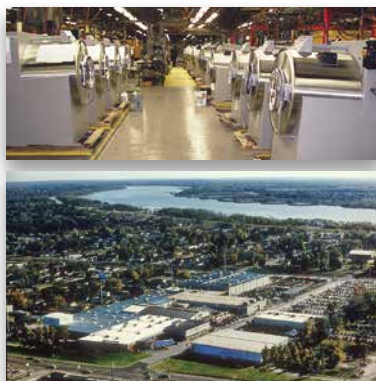


Milnor Laundry Equipment and the Milnor Technical Knowledge Base



Milnor is a leading manufacturer of commercial laundry machinery based in Kenner, Louisiana. Milnor's Made-in-USA washer-extractors range from 25-700 lbs. capacity. Milnor's equipment is designed to serve a broad spectrum of customers, from OPL washers to automated tunnel washing systems that process 7,000 lbs. per hour or more, as well as dryers, material handling systems, and laundry computer networks.

Have a question about your Milnor equipment? Call Minnesota Chemical today, or search the Milnor Technical Knowledge Base at <https://www.milnor.com/technical-knowledge-base/>



Equipment

New Milnor Washer/Extractors at MSRP

– 30015T6X, 40#, EP Express Micro, RinSave, 4 Speed, 208/240/60/3.....	\$17,995
– 30015VRJ, 40#, EP Plus Micro, Temp Control, RinSave 7 Speed, 208/240/60/3.....	\$19,445
– 30015V8Z, 40#, MilTouch Programmer, Temp Control, RinSave, 7 Speed, 208/240/60/3	\$21,525
– 30022T6X, 60#, EP Express Micro, RinSave, 4 Speed, 208/240/60/3.....	\$19,195
– 30022VRJ, 60#, EP Plus Micro, Temp Control, RinSave 7 Speed, 208/240/60/3	\$20,095
– 30022V8Z, 60#, MilTouch Programmer, Temp Control, RinSave, 7 Speed, 208/240/60/3	\$21,795
– 36021V5J, 80#, EP Plus, Temp Control, RinSave, 7 Speed, 208/240/60/3	\$28,495
– 36021V7Z, 80#, MilTouch Programmer, Temp Control, RinSave, 7 Speed, 208/240/60/3	\$33,875
– 36026V5J, 100#, EP Plus, Temp Control, RinSave, 7 Speed, 208/240/60/3	\$31,895
– 36026V7Z, 100#, MilTouch Programmer, Temp Control, RinSave, 7 Speed, 208/240/60/3	\$37,495

- 42026V6Z, 140#, MilTouch Programmer, Temp Control, RinSave, 7 Speed, 208/240/60/3\$42,135
- 42030V6Z, 160#, MilTouch Programmer, Temp Control, RinSave, 7 Speed, 208/240/60/3\$45,945

RinSave saves water and formula time by special speeds and saving 1 or 2 rinses. MilTouch is touchscreen programmer with laptop programmability – transfer formulas by USB stick.

New Dryers at MSRP

- Huebsch HT055FN, Gas, 50#, Dual Digital Timers, Slimline, reversing, passes through 34.5" doorway, various voltages \$6,697
- 120#, 170#, and 200# dryers are available in reversing and with Galaxy Micro Control and OPT True Moisture Sensing Drying*
- Huebsch HT075FN, Gas, 75#, Dual Digital Timers, non reverse, various voltages\$7,010
- Huebsch HT075FN, Gas, 75#, Dual Digital Timers, reversing, various voltages \$8,388
- Huebsch HT075NN, Gas, 75#, Galaxy Micro Control, reversing, OPT True Moisture Sensing Drying various voltages..... \$9,502

All Huebsch dryers (except electric heat) have available in the basket CARE fire suppression including remote connect for cold enclosures.

Other Huebsch dryers in sizes from 25# to 200#. And ask about stainless steel cylinder and panels. Ask about **ADC** and **CLM** dryers in large capacities.

MSRP is a good BUDGET estimate of final washer or dryer price after discount allowed, freight and delivery added back in. Your price could be less!

**SPECIALS IN STOCK: Used Chicago Comet 80" ironer \$7,500 FOB MCC.
New R&B Wire RBSP-1000 Laundry Floor Scale, List \$2,607, special \$2,500 FOB MCC.**



Service Tips By Ed

Drain Troughs

Drain troughs and trough screens are important to keep clean. It is easy to forget to clean drain trough screens on a regular basis, but failure to do so will eventually cause the trough to clog, drain more slowly,

and possibly impede the washer's drain function. It can even cause the trough to overflow and flood your laundry.

If the clog causes the washer drain flow to be obstructed, the machine will not be able to drain properly, and may then go into a safety mode that will not allow the machine to add any additional water.

You may need to check the trough multiple times a day depending on the amount you wash. Another proactive measure you can take to help avoid drain issues is to make sure there is sufficient clearance between the machine's drainpipe and bottom of the trough. If this distance is too small, you may experience problems when the water level is high in the trough. Remember: if needed, you can always cut the drain's rubber boot or PVC pipe to leave as much additional clearance as possible.



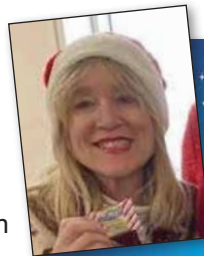
Parts Ideas from Barb: Washer Boards

A reminder that Minnesota Chemical stocks many parts, including numerous computer boards. Milnor computer boards are available, and we have main processing boards in stock, as well as many display boards, power supply boards, start circuit boards and switch panel boards. Software and SIM cards are available with short lead time as well—these are personalized for your machine. Almost all boards have the part numbers written on them. Most of the software will also have a series of numbers or letters referencing the version.

We also carry Huebsch OPL tumbler control assemblies, including hybrid OPL controls and OPL display boards. We can also assist in rebuilding of boards if needed. Our vendors will offer rebuilt boards for less expensive than a new board.

Before simply replacing a board, please call us to speak to a certified technician to troubleshoot that a board is truly needed.

To assist us in providing you with the best service, please have your model and serial number at hand if possible.



Fun Fact: Did you know that the majority of the world's approximately 3.7 million reindeer reside in Northern Scandinavia-Russia, and Iceland?



Washer-Extractor Control Options

Milnor washer-extractors are available with an array of controllers, depending on the size, scope and capabilities required for each washroom's unique operations.

E-P OneTouch® control: This basic control offers four pre-programmed formulas for our cabinet washer-extractors.

E-P Express® control: This median control is equipped with 30 formulas, ten of which are pre-programmed for nine different industries. E-P Express is available on our cabinet line and smaller rigid mount washer-extractors.

E-P Plus® control: This comprehensive control is equipped with 30 formulas, including 10 pre-programmed for nine different industries, and allows the operator advanced flexibility compared to E-P Express. It is available on our cabinet and certain rigid-mount washer-extractors.

MilTouch™ control: This intuitive control features an informative touch screen display and is found on our rigid and soft-mount washers up to 275 lb. capacity.

MilTouch-EX™ control: MilTouch-EX is our most advanced, yet easy-to-use control that features a resistive touchscreen display. This controller is utilized on our X-series, Divided-Cylinder and large M-Series washer extractors.

To learn more about our washer-extractor controllers, visit <https://www.milnor.com/controls#miltouch-ex>.

