

Our Associations: UMVAILM Please Join us for the May Meeting



Please join us on May 13, 2025, for our 2025 Education Series at Healthpartners Methodist Hospital, St. Louis Park, MN

UMVAILM's spring education event is being hosted by HealthPartners Methodist Hospital at their beautiful campus in St. Louis Park. Join us to explore strategies for optimizing FTE efficiencies and harness emerging technologies in laundry equipment, robotics and AI, and network with your peers!

UMVAILM began in 1983 as a local chapter of NAILM (now ALM). UMVAILM strives to provide networking, informational, and educational sessions to support all aspects of the textile care industry. We are excited to share best practices with one another in this field and are eager to see what innovations the future holds. We are eager to welcome new members who wish to learn from the best and teach us new things too!

For more information, and to register for the May Meeting, visit <https://umvailm.org/>



Calendar of Events

Every Tuesday @ 10:30 AM–11:30 PM Central – **Drycleaning & Laundry Institute (DLI): DLI Weekly Peer-to-Peer Zoom Meetings**; FREE; Share ideas and brainstorm with other professional cleaners from around the globe with weekly Zoom open discussions. Members may click to register. <https://dlionline.org/events/>

April 30 @ 2:00–3:30 PM Central – **On the Front Lines: Insights from Today's Laundromat Managers (CLA)** Zoom. Join us for a discussion featuring experienced laundromat managers sharing their firsthand experiences, challenges and best practices. From customer service strategies to operational efficiency, learn how managers navigate today's evolving industry. Whether you're a laundromat owner, aspiring manager or industry investor, this webinar offers valuable insights to enhance your business and stay ahead in the competitive laundry market. Don't miss this opportunity to hear real-world stories and expert advice. <https://laundryassociation.org/cla-event/on-the-front-lines-insights-from-todays-laundromat-managers/>

May 8 @ 1:00 PM Central – **Virtual Roundtable: Laundry Operations (ALM)** Zoom. FREE. Networking is key to building meaningful relationships and exploring new opportunities. Our virtual roundtable discussions provide a dynamic platform for you to connect with peers, share experiences, and foster collaborations. Don't miss out on this chance to expand your professional network. Participation is Complimentary. <https://www.almnet.org/events/EventDetails.aspx?id=1928035&group=>

May 13 @ 12:00 PM Central – **CLA: How to Start a Laundromat: Workshop**: Are you wondering what it takes to run a laundry-based business? This free webinar covers the basics of laundry investment and management. We take the guesswork out of the laundromat investment process and provide you with an overview of what's needed to open a self-service laundry. If you're new to the industry or looking for a refresher, we invite you to join us! <https://laundryassociation.org/cla-event/how-to-start-a-laundromat-virtual-workshop-5/>

3750 Dunlap Street North
Arden Hills, MN 55112
651-646-7521
Toll Free: 1-800-328-5689
Fax: 651-649-1101

13636 Carmen Avenue
Suite 4
Menomonee Falls, WI 53051
262-781-8630

Equipment Coordinator: Christine Evenson
Equipment Sales: Daniel Baker, James Baker,
Tony Crain
Front Desk: Tina Hinrichs

Service Engineers: Dan Elstad,
Phil Hall, Andy Putnam, Anthony Dickenson,
Drake Ristvedt
Supply Sales: John Sullivan,
Chris Schiefelbein, James Riopel
Parts Manager: Barbara Swanson

Warehouse: Mac Dolphy, Warehouse
Manager
Purchasing/Accounts Payable/ Supply
Department Manager: Chris Schiefelbein
CFO: Kwen Johnson
City Desk: Tina Hinrichs

Parts Direct Line: 651-288-4849 • Service Direct Line: 651-288-4857 • Parts & Service Fax: 651-646-7206

NOW HIRING: FT MAINTENANCE TECH – Call 651-288-4857 to discuss

Supply Ideas by Chris Schiefelbein, John Sullivan and James Riopel



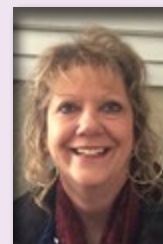
'UNX-Christeyns' Becoming 'Christeyns'

UNX-Christeyns, a long-trusted MCC vendor in commercial cleaning solutions, is excited to announce that the company will transition its brand identity from UNX-Christeyns to Christeyns, reinforcing its place as part of the global Christeyns family of companies.

Since the successful merger of UNX Industries and Christeyns USA in July 2022, the organization has strategically implemented changes in phases to ensure a seamless experience for both employees and customers. "This rebrand has been part of our long-term vision since merging in 2022," said Josh Lilley, CEO of UNX-Christeyns. "This transition communicates a clear and unified message about our global identity, which is increasingly focused on market-leading customer partnerships, innovation, and technology."

The many popular UNX products such as 'Spec-Tak' and 'Breakthrough' will continue under the new branding. More to come!

Ask your Minnesota Chemical supply sales rep for more info today!



Upgrade your Laundry Operation by Saving Time, Money, and Labor in Your Laundry with RinSave®

Milnor's RinSave® proprietary, industry-leading water-saver feature is standard on all T-Series, V-Series, X-Series, and 48040 open-pocket washer-extractors.

This exclusive tech allows the basket to reach a precise G-force that "slings" the wash liquor (including water, chemistry, and soil) out of the goods after a wash step. Milnor's RinSave® will save up to 2 rinses per load and fill/rinse time. Laundries with the Milnor RinSave® feature will get more loads per hour to save you money! You can save up to .4 gallons of water per pound of processed goods.

That's up to two rinse steps and ten minutes saved per load! When time is money—and water and energy cost, well, money—saving hundreds of gallons of water every day with Milnor's RinSave® can add up to real savings. Not just for your bottom line, but for the planet as well. For more information, please contact your MCC sales rep, or visit <https://www.milnor.com/save/>.



Sankosha PS-290U-V3 Autobagger with Lift

Our flagship model Automatic Bagging Machine With Elevator (PS-290U-V3) sets the standard for efficiency and ease of use. Featuring a new user-friendly control panel and the ability to load from either side. With auto feed and discharge, it's designed to streamline your workflow and increase productivity. Experience unmatched performance with Sankosha.

Process up to 240 Bundles/Hour worry-free with Sankosha from Minnesota Chemical!

<https://www.sankosha-inc.com/bagging-machines/ps-290u-v3.php>

Ask your Minnesota Chemical rep for more information today!



Equipment

New Milnor Washer/Extractors at MSRP

– 30015T6X, 40#, EP Express Micro, RinSave, 4 Speed, 208/240/60/3.....	\$19,995
– 30015VRJ, 40#, EP Plus Micro, Temp Control, RinSave, 7 Speed, 208/240/60/3.....	\$21,325
– 30015V8Z, 40#, MilTouch Programmer, Temp Control, RinSave, 7 Speed, 208/240/60/3.....	\$23,725
– 30022T6X, 60#, EP Express Micro, RinSave, 4 Speed, 208/240/60/3.....	\$21,325
– 30022VRJ, 60#, EP Plus Micro, Temp Control, RinSave, 7 Speed, 208/240/60/3.....	\$22,145
– 30022V8Z, 60#, MilTouch Programmer, Temp Control, RinSave, 7 Speed, 208/240/60/3.....	\$23,975
– 36021V5J, 80#, EP Plus, Temp Control, RinSave, 7 Speed, 208/240/60/3.....	\$31,645
– 36021V7Z, 80#, MilTouch Programmer, Temp Control, RinSave, 7 Speed, 208/240/60/3.....	\$37,535
– 36026V5J, 100#, EP Plus, Temp Control, RinSave, 7 Speed, 208/240/60/3.....	\$35,195
– 36026V7Z, 100#, MilTouch Programmer, Temp Control, RinSave, 7 Speed, 208/240/60/3.....	\$41,285
– 42026V6Z, 140#, MilTouch Programmer, Temp Control, RinSave, 7 Speed, 208/240/60/3.....	\$45,295

– 42030V6Z, 160#, MilTouch Programmer, Temp Control, RinSave, 7 Speed, 208/240/60/3.....	\$50,075
--	----------

RinSave saves water and formula time by special speeds and saving 1 or 2 rinses. MilTouch is a touchscreen programmer with laptop programmability—transfer formulas by USB stick.

New Dryers at MSRP

– Huebsch HT055FN, Gas, 50#, Dual Digital Timers, Slimline, reversing, passes through 34.5" doorway, various voltages.....	\$6,864
<i>120#, 170#, and 200# dryers are available in reversing and with Galaxy Micro Control and OPT True Moisture Sensing Drying</i>	
– Huebsch HT075FN, Gas, 75#, Dual Digital Timers, non reverse, various voltages.....	\$7,185
– Huebsch HT075FN, Gas, 75#, Dual Digital Timers, reversing, various voltages.....	\$8,597
– Huebsch HT075NN, Gas, 75#, Galaxy Micro Control, reversing, OPT True Moisture Sensing Drying, various voltages.....	\$9,739

All Huebsch dryers (except electric heat) have available in the basket CARE fire suppression including remote connect for cold enclosures.

Other Huebsch dryers in sizes from 25# to 200#. And ask about stainless steel cylinder and panels. Ask about **ADC** and **CLM** dryers in large capacities.



MSRP is a good BUDGET estimate of final washer or dryer price after discount allowed, freight and delivery added back in. Your price could be less!

SPECIALS IN STOCK: New R&B Wire RBSP-1000 Laundry Floor Scale, List \$2,607, special \$2,500 FOB MCC.



MCC Service Tips

Huebsch Service Training offers several previously-recorded equipment maintenance training sessions to watch on demand.

This service training is the perfect tool for owners and members of their service team to expand their equipment knowledge in terms of how it works, preventative maintenance, troubleshooting, understanding of error codes and more.

Virtual service schools available on demand include:

Hardmount Washer-Extractors: <https://attendee.gotowebinar.com/recording/4400497732366186243>

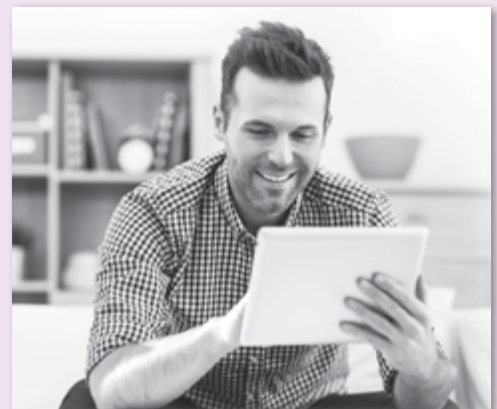
Washer-extractors are the workhorse of any vended laundry. The washer-extractor service school will help you maintain and service your machines to ensure that they continue to work. 3D graphics and high-end visuals provide the viewer with detailed looks at both the construction and function of the washer-extractor. From basic theory of operation to interpreting error codes, this webinar is a must for any operator or service technician.

Tumble Dryer/Tumblers: <https://attendee.gotowebinar.com/recording/5389583208193971215>

The Stack Tumble Dryer webinar experience is designed to provide a thorough knowledge of theory, maintenance and troubleshooting. The information provided in this session will not only give you the knowledge of properly maintaining your tumble dryers, but also the abilities to troubleshoot common service issues. With 3D renderings and short video clips, viewers will have access to machines like never before.

Topload Washers: <https://attendee.gotowebinar.com/recording/7383020879398319631>

When troubleshooting top load washers, it is critical that you understand all the machine's parts and how they work together. The top load washer service school webinar delivers the best visual content to date with several close-up videos and never-before-seen 3D renderings, giving you a detailed look into the machine's components and functionality. From mechanical operation to diagnosing potential noises, this training will give you a comprehensive look at top load washers.



Parts Ideas From Barb

Spring Cleaning and Equipment Tune-Ups

Springtime is here! The flowers are blooming and the weather is warm(ing).

Time for spring cleaning and spring maintenance on your commercial laundry equipment!

Does your door not open and shut cleanly like it used to? Whether it is a washing machine or dryer, you may need a few parts to bring it back up to snuff.

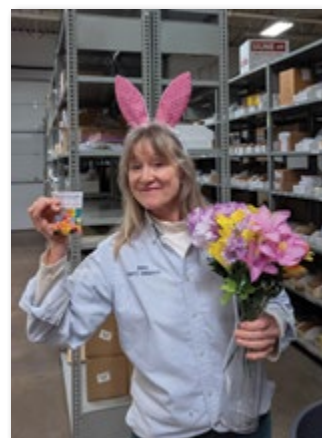
If you are having issues with your Milnor washing machine door, sometimes the solenoids and micro switches are the culprit. Ask me for more details!

For Huebsch or Speed Queen, we stock door components: inner door bezels, door gaskets and door switches, start switches—lint door switches and door latch kits.

For American Dryer—(Whirlpool) door latches, sail switch and lint door switches are parts that may be at issue.

Whatever the make of your machines—if I do not have it—I can find it for you, help with your spring rejuvenation of your machines!

For more information, please contact me in the Minnesota Chemical Parts Department at (651) 288-4849.



Chicago Dryer: Leader in Automated Laundry Feeders, Flatwork Ironers, Folders, Small Piece Folders and Specialty Finishing Equipment

Chicago Dryer has been the made-in-USA leader in innovative flatwork finishing equipment for over 100 years.

From high-end resorts to the most powerful commercial laundries in the industry, the world's leading organizations turn to Chicago Dryer.

Chicago Dryer produces, in its American factory, the widest range of separating, feeding, ironing, folding, and linen handling equipment in the world. Chicago and MCC can help your business operate more cost effectively, save you costly labor hours, help you to streamline your operations and repurpose your overworked employees elsewhere to maximize your efficiency.

Ask your Minnesota Chemical rep today how new Chicago finishing equipment can help improve your operation's efficiency and quality today.

CHICAGO



SEPARATING



FEEDING



IRONING



FOLDING



COMBINATION



TECHNOLOGY

