

THE HORTON FEATURES

**Horton**  
STRENGTH & SAFETY IN EVERY DETAIL™

# DIRECTIONAL SAFETY LIGHTING

SMART LIGHTING FOR INCREASED VISIBILITY.

**Horton's unique Directional Safety Lighting heightens the visibility of the ambulance, enhancing the safety of those inside and outside the vehicle.**

For those who expect and require only the best, Horton redefines and reimagines safety, design and style. Our advanced Directional Safety Lighting directs traffic around the ambulance, helping to enhance the safety of your crews, their patients and those around the scene. Horton's seamless, integrated system is easy to use and designed to provide the greatest visibility so your crews can keep their focus on what matters.

## ■ ■ INTEGRATED WITH HORTON i4G™ SYSTEM

Horton Directional Safety Lighting is integrated with our i4G electrical system, providing seamless operation and saving valuable real estate on the front console. When the ambulance is placed in park, your crew can choose from three lighting directions on the i4G monitor: right to left, left to right or center out.

A Horton exclusive feature automatically turns off all other warning lights (if desired) at the back of the ambulance, except for the two uppermost lights, so the directional lights stand out. Then, when the ambulance is taken out of park, i4G will automatically turn off the directional lighting and turn on the emergency lights. An optional switch panel on the rear door provides another area where the directional lights can be operated.

## ■ ■ STRATEGICALLY LOCATED

Unlike other manufacturers, Horton Directional Safety Lighting is located above the drip rail so it doesn't take up valuable space at the top rear of the ambulance. That means there's more space for emergency lights, graphics or other customization.

## ■ ■ LIGHT YOUR OWN WAY

Offering the ultimate in customization, we designed our Directional Safety Lighting with several options. The lights can be programmed to remain on even after the ambulance is taken out of park. They can also be mounted on the front of the ambulance, in addition to the rear, providing you with even more options.

## KEY ADVANTAGES



### SINGLE-CLICK CONTROL



### SAVES SPACE ON THE AMBULANCE BODY AND FRONT CONSOLE

# THE HORTON DIFFERENCE

All Horton ambulances come standard with all the features you know and trust for strength and safety.



## STRENGTH AND SAFETY



### Horton Occupant Protection System™ (HOPS™)

Engineered occupant protection from every direction.



### The Horton Legendary Body™

Engineered and constructed to deliver the ultimate in strength and safety.



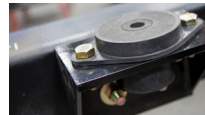
### Tested Beyond the Limits

Designed and built to exceed industry testing standards.



### Horton QuietGuard™

Exclusive sound deadening so crews can perform at their best.



### Horton Vi-Tech™ Mounting System

Superior strength, ensuring body-to-frame integrity.



### HO<sub>2</sub>rton System™

Designed and tested to function virtually failure free.

## DISTINCTION IN EVERY DETAIL

### Horton Advanced Customization

You're the expert on your department's needs, and we're the experts at getting it done.

### Horton Design Culture

You're investing in your future. We're driven to do more for you than most think possible.

### Horton Distinctive Style

Safety, functionality and style aren't mutually exclusive, so you can make your Horton look as good as it performs.

## ADDITIONAL FEATURES

COOL-TECH®

i4G™

HORTON 360™

DIRECTIONAL SAFETY LIGHTING

CUSTOM RUB-RAIL LIGHTS

CUSTOM BACKLIT FEATURES

CUSTOM GRAPHICS

CUSTOM INTERIOR



## COMPREHENSIVE SUPPORT

Backed by our dealer network, the Horton team and REV Financial Services, we are ready as your first line of defense for your next purchase or when you need support.

### Horton Dealer Network

One-of-a-kind ambulances demand our extraordinarily qualified service and support.

### Horton Comprehensive Coverage

Our warranties deliver confidence and peace of mind.



Contact us at 1-800-282-5113 or scan to find your local dealer  
[HORTONAMBULANCE.COM](http://HORTONAMBULANCE.COM) | [INFO@HORTONAMBULANCE.COM](mailto:INFO@HORTONAMBULANCE.COM)

**Horton**  
STRENGTH & SAFETY IN EVERY DETAIL™