

Enhanced Marketing Package



Consider an Enhanced Marketing package if:

- networking and relationship building with local businesses is important
- customers are searching for your products or services on-line
- a picture is worth a thousand words in your marketing strategy
- you want to save \$700 on a \$940 annual marketing package!



Take control of your online advertising with the help of Spruce Grove & District Chamber of Commerce. Show prospects and customers how to find you with our powerful advertising solutions. Our Enhanced Marketing Package is designed to accommodate varying budgets and is one of the most effective ways for businesses of all sizes to expand their reach, and find new customers.

The Spruce Grove Chamber offers business owners the freedom to advertise and promote their products or services and receive immediate responses. Business owners can reap the benefits of this method of marketing as it is inexpensive and easy to start.

Thousands of consumers connect with our website and community app to find our members which demonstrates the commitment our community has to shopping locally. Don't miss your chance to rise to the top with our Enhanced Marketing Package!

Basic Membership

Included with Annual Membership

- Driving directions
- Name, address, phone, email, website
- Business description in on-line Directory (200 characters)
- Hours of operation
- Keywords (240 characters)
- Facebook, LinkedIn & Twitter
- Member to Member discount cards
- Member to Member postings option
- Hot Deals
- Job Listings
- News Releases
- Events
- Business@ Breakfast \$10/visit
- Chamber on Tap \$10/visit

Enhanced Marketing Package

Basic Membership Package included

- Enhanced Marketing \$240 (+GST) Annually****
- Priority listing in Chamber On-line Business Directory and Community App
- Business Description in On-line Directory (1600 characters)
- Directory search results summary (200 characters)
- Keywords (unlimited)
- Your Logo
- Photo Gallery (unlimited)
- YouTube Video
- Search results priority
- Highlights: up to 5 bullets with URLs
- Google Map
- Business@ Breakfast (*2 Free Admissions per Breakfast - Value \$600 - approx. 30 events per year)
- Chamber on Tap (*2 Free Admissions per Chamber on Tap - Value \$140 - approx. 30 events per year)

For more information or to purchase your EMP, email info@sprucegrovechamber.com or call 780-962-2561

* Subject to availability. Due to limited seating, registration is required and accepted on a first come, first served basis.

** The Enhanced Marketing Package is valid for 12 months from the date of purchase and is in addition to your annual Membership fee. A valid Membership is required to access the Enhanced features.

Membership On-line Profile

Share:      

Solare Distributors Inc..

Automotive Dealers & Sales

[VISIT WEBSITE](#)

28 - 308 Westgrove Dr
Spruce Grove, AB T7X 4P9
(780) 960-2044
1-855-960-2044
(780) 960-2144 (fax)

LinkedIn

Hours:
Mon-Friday 9am-5pm
Thurs until 6pm
Sat 10am-4pm Sun Closed

About

Power Bill Auditing, LED Lighting, and Solar PV using a three-step system to save big money on your energy costs. Specializing in Commercial, Municipal, and residential solutions, we make magic!



200 Character description

Enhanced Marketing Package On-line Profile

Solare Distributors Inc.

← Priority listing in the on-line directory and Community App

Share:      

Environmental | Solar Providers

↓ Highlights: up to 5 bullets with URLs



← Your logo

[VISIT WEBSITE](#)

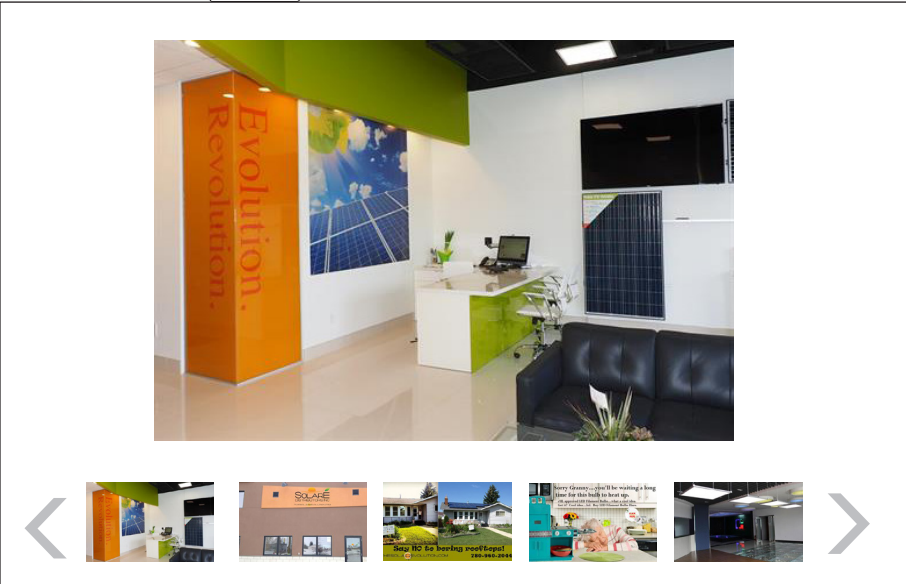
[REQUEST INFO](#)

28 - 308 Westgrove Dr
Spruce Grove, AB T7X 4P9
(780) 960-2044
1-855-960-2044
(780) 960-2144 (fax)
solaredistributors.com

 LinkedIn

Hours:
Mon-Friday 9am-5pm
Thurs until 6pm
Sat 10am-4pm
Sun Closed

About Highlights Media Map



Photos and videos

← 1600 Character description

About Us

Power Bill Auditing, LED Lighting, and Solar PV using a three-step system to save big money on your energy costs. Specializing in Commercial, Municipal, and residential solutions...[read more](#) →

Businesses with dual chamber memberships (Spruce & Stony) will share the total cost of the Enhanced Marketing Package with each chamber.