



WELCOME TO AMERICINN.

Delivering the service and amenities you need to feel refreshed and restored is our mission.

We invite you to:

Connect to our complimentary, hotel-wide wifi to keep in touch with your family and friends;

Get comfortable in one of our cozy Serta® Perfect Sleeper beds;

Wake to a hot cup of Perk coffee and a free home style breakfast.

Best of all, we offer Wyndham Rewards.

To find out more stop by the Front Desk or visit wyndhamrewards.com

So relax and make yourself at home. If there's anything we can do to make your Americinn experience more memorable and enjoyable simply let us know.

– Your Americinn Staff


Americinn[®]
BY WYNDHAM

Americinn Litchfield

1525 E. Highway 12, Litchfield, Minnesota 55355

Phone 320.693.1600 Fax 320.593.1500

wyndhamhotels.com/amicinn 800.634.3444



GUEST SERVICES

AmericInn Perk Breakfast

Breakfast is served in our Lobby area from 6:00 a.m. to 10:00 a.m. daily.

Business Center

Our Business Center is open 24 hours a day and is located near the Front Desk.

Check-Out – Dial "0"

Check-out time is 11:00 a.m. Please notify the Front Desk if your departure will be delayed.

Church/Worship Services

Please contact the Front desk for more information.

Copies/Fax Machine – Dial "0"

Photocopy services and fax services are available 24 hours a day at the Front Desk for a nominal fee.

Credit Cards

We honor all major credit cards, as well as debit cards.

Emergency – Dial "0"

Fire Emergency – Dial "0"



GUEST SERVICES

Guest Laundry

Conveniently located on the first floor, near the back entrance. Change and soap are available at the Front Desk.

High Speed Wireless Internet

High speed wireless internet is available in all guest rooms and throughout the Hotel.

Housekeeping – Dial “0”

Please contact the Front Desk should you desire early housekeeping service, late check-out or extra linens, towels or blankets.

Ice Machines/Vending

Ice and Vending Machines are located by the back entrance.

Lost and Found – Dial “0”

Please contact the Front Desk. If an item is left behind in the guest room, it may be shipped at the guest's expense.

Mail and Messages – Dial “0”

Guest mail can be dropped off at the Front Desk. To check messages, please dial 0.

Newspapers

Complimentary newspapers are available each weekday morning in the lobby.

Pool

The pool is open everyday from 6:00 a.m. to 11:00 p.m. for children, for adults 6:00 a.m. to midnight. Pool towels are provided in the pool area.

Reservations

For nationwide reservations, please call [800]634.3444 or visit us on the web at wyndhamhotels.com/americinn.

Telephone Guide

Local calls are free. For long distance rates, please call the Front Desk.

Wake-Up Call – Dial “0”

To schedule a wake-up call, please contact the Front Desk. There is an alarm clock on the nightstand for your convenience.



HOUSE RULES

- This AmericInn property ("Hotel") reserves the right to have guests removed from the Hotel if the rules are not being followed. This includes any disruptions to other guests in the Hotel. This Hotel reserves the right to remove said guest from the premises without refund.
- Children must be supervised at all times. This is not limited to, but includes, the swimming pool and breakfast area.
- All guests must have a valid credit card on file in order to rent a room. You may still pay with another method of payment at the time of check-out.
- This hotel is not responsible for guest valuables left unattended. For your convenience there are safe deposit boxes available at the Front Desk.
- If you choose to decorate your door or your guest room, the decorations and method of attaching decorations must be pre-approved by the Manager on duty.
- All public areas close at 10:00 p.m. and noise levels are strictly enforced.
- Non-Registered guests are asked to leave at 10:00 p.m. After this time, an additional \$10.00 per non-registered guest fee may be charged to the room violating this rule.
- Linens, room supplies, furnishings or furniture found missing or damaged in a guest room after departure will be charged to the person whose signature appears on the guest folio.
- Sports equipment, such as hockey sticks, are not permitted in the guest rooms or in any public area of the Hotel. We will be happy to store them for you in a secure location.
- A maximum of five people per room is permitted in accordance with state fire codes.
- Our hotel is dog friendly. 1 dog per room, per night. There is a \$20.00 per night fee. For more information on our pet policy, please contact the Front Desk.
- Smoking in a non-smoking room will result in a minimum cleaning charge of \$200.00.
- Firearms are not permitted in the Hotel.

Forget something?

We want to make sure you're comfortable. If you've forgotten or are in need of any essential toiletry item, please come to our Front Desk for a complimentary replacement.





FIRE SAFETY

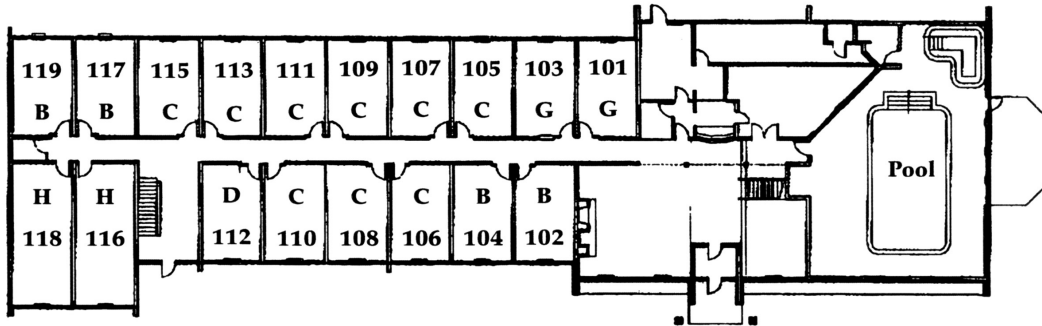
Take a moment to familiarize yourself with the floor diagram on the back of your guest room door. In the unlikely event of a fire, leave your guest room immediately. Take your room key and close the door behind you. If the fire is in your room, get out and close the door. Alert the Front Desk. If the fire is not in your room, leave if you can. First, feel the door. If it is cool, slowly open the door and proceed to the nearest exit. If the hallway is full of smoke, crawl to the nearest exit. If the door is hot to the touch, do not open the door. Wet towels and sheets and place them over the cracks on the door. Shut off fans and the heating/air conditioning unit. Call the fire department and Front Desk. Signal from your window so rescue crews know where you are located.

GUEST SECURITY

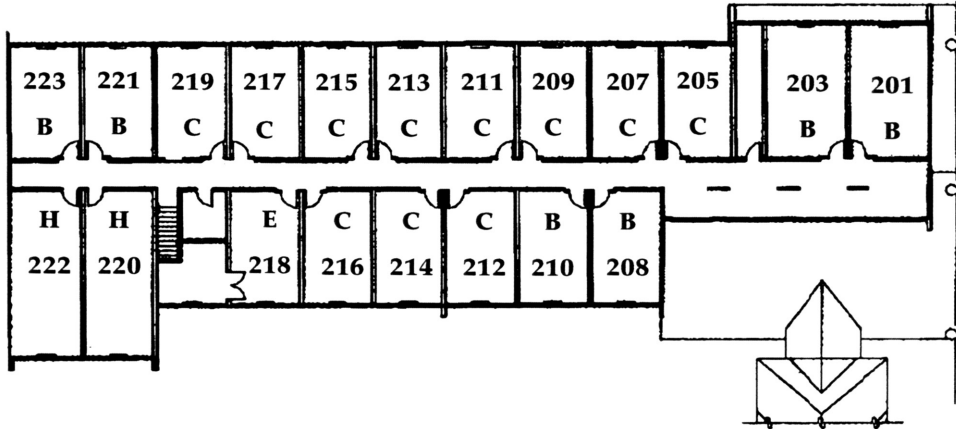
Lock your vehicle and do not leave money or valuable items visible inside. We are not responsible for damage, loss or theft of articles. Don't answer the door in your room without verifying who is there. If a person claims to be an employee call the Front Desk and ask if someone from the staff is supposed to have access to your room and for what purpose. Close the door securely whenever you are in your room and use all of the locking devices provided on your guest room door. Do safeguard your key. Be sure to leave it with the Front Desk upon departure. Please do not leave the key in your room. For your safety, do not give your key to anyone. Safes are available in many rooms; please inquire at the front desk. Do not leave valuables or money in your room. The Hotel is not responsible for loss of items.

HOTEL LAYOUT

FIRST FLOOR

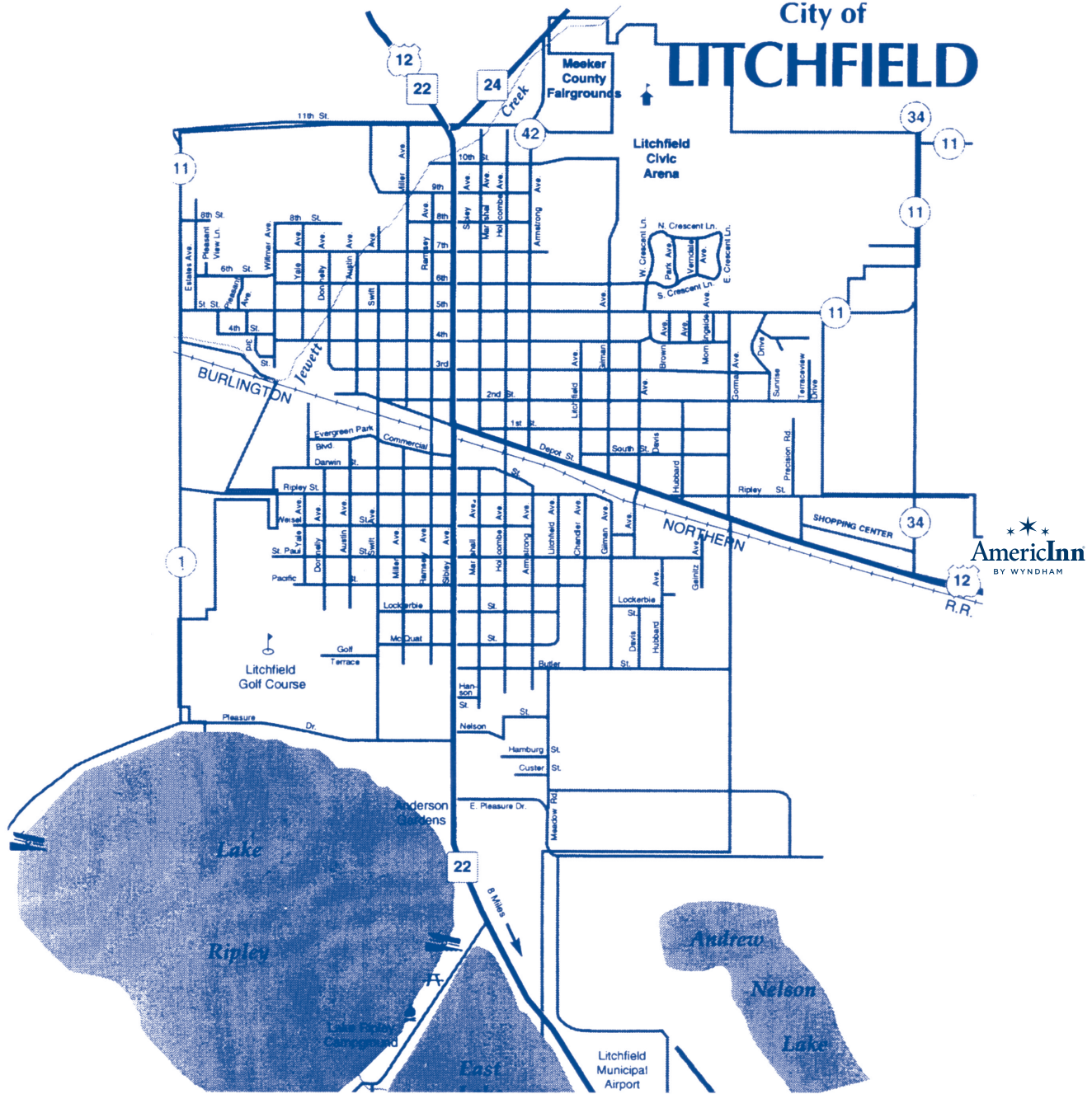










SECOND FLOOR



AREA MAP

City of LITCHFIELD



-  Golf Courses
-  Public Landings
-  Airports
-  Campgrounds
-  Fairgrounds
-  Federal Highways
-  State Highways
-  County Roads

LOCAL ATTRACTIONS

HISTORICAL SITES

- **Frank Daggett Post 35 G.A.R. Hall:** Which also is the Meeker County Historical Society Museum, is located at 308 Marshall Ave. North. The hall includes artifacts from pioneer days, Civil War artifacts, original Library Society books from 1876, Indian artifacts and displays, old Medical facilities, school supplies, farm machinery and tools, household appliances, and sports. Museum hours are noon to 4p.m. Tuesday through Sunday. For more information call (320) 693-8911.
- **“Take a Walk Through History”:** Litchfield is alive with history. A walk down Litchfield Street, along with Marshall Ave., Holcome Ave., Armstrong Ave. North, Sibley Ave. South and Donnelly Ave. South will showcase the town’s most impressive historic homes. See the front desk or call the Litchfield Chamber of Commerce at 693-8184 for more information.

LITCHFIELD PARKS

- **Central Park:** Located in the middle of town at 300 Sibley Ave. No., Central Park is the city’s most visible park and the site of several community activities throughout the year. Some activities include Music in the Park and Pie in the Park during the summer months, Crazy Days and the Farmer’s Market.
- **Memorial Park:** The Army tank marks Memorial Park near Lake Ripley. The park includes a beach, concession stand, bath house with bathrooms, a volleyball area and play equipment.
- **Jaycee Park:** Next door to Memorial Park is Jaycee Park, home of the “hamster wheel,” three swing sets, a jungle gym and other play equipment. The public boat landing also is located here.
- **Anderson Gardens:** Volunteer groups design and care for flower beds in Anderson Gardens, a 2 1/2 acre botanical area located on the northeast edge of Lake Ripley. The property was donated to the city and the Parks Dept. maintains the grounds.
- **Lion’s Park:** Lion’s shelter is located in Lion’s Park, near the golf course on West Pleasure Drive. The shelter is equipped with electric hook-up and a wooden play structure is nearby. To reserve the shelter, call Community Education at 692-2354.
- **South Park:** South Park at 300 Miller Ave. South, includes two new tennis courts. The park also has play equipment and a volleyball court.
- **North Park:** North Park has playground equipment and a volleyball court. The park is located at 611 Miller Ave. North.
- **Becker Park:** In the winter, Becker Park has an outdoor ice rink. The park is located at 621 Chandler Ave. South.
- **Sunrise Park:** This park, located along 206 Sunrise Drive, recently received \$10,000 play equipment upgrade.
- **Prairie Park:** Located in the southeast part of town along Butler Street, features a walking trail and playground equipment. The trail winds through an area that has been planted with native prairie grasses, as well as a wide variety of native trees and bushes.

LOCAL ATTRACTIONS

- Softball field along Gilman Ave.: Located near the Litchfield High School, this area features 2 VFW fields that are lighted at night; 2 Civic Arena fields that do not have lights; 4 tennis courts, a horseshoe court, 2 outdoor hockey rings, a baseball field sponsored by the Eagles, and Optimist Park, home of the Litchfield Blues amateur baseball team.
- Other city parks that have playground equipment: Pleasant View Park, 600 Willmar Ave. North; Casey Park, 9th Street West and Miller Ave. North; Crescent Park, 721 Crescent Lane West; SuperValu Park at the intersection of South Davis Ave, and East South Street; Thompson Park, 402 Chandler Ave. South. According to the Park Dept., each city park has one picnic table and one garbage can.

LOCAL FESTIVALS & EVENTS

- Antique Car Run: The New London to New Brighton antique car run, which takes place each August goes through the heart of Meeker County. Stops along the way have been in Manannah, Litchfield and Kingston.
- Harvest Madness: Community togetherness is celebrated in October on the Thursday that falls during Fire Week. Downtown Litchfield is bustling with Harvest Madness customer appreciation sales at downtown merchants, the Farmer's Market is at full swing in Central Park and the Fire Station opens its doors to let everyone view their Firehouse and Fire trucks.
- Memorial Day Parade: Litchfield's veterans organizations plan a stirring tribute each Memorial Day. Kicking off with a parade through Litchfield's downtown, the event wraps up with a Memorial service at Ripley Cemetery.
- Manannah Daze: The small village of Manannah puts its best foot forward the second weekend of June each year. Manannah Daze includes a parade and a variety of competitive activities.
- Kraut & Wurst Day: It isn't the worst day. It's the Wurst Day. The residents of Watkins band together on the first Saturday in August to celebrate the area's German heritage.
- Meeker County Fair: It's the "Best Four Days of Summer" for county residents during the first weekend in August. Traditional county fair activities, such as the showing of livestock mingle with carnival rides and games during the weekend. Grandstand shows in the past have included a demolition derby, and truck and tractor pulls.
- Watercade: The weekend immediately following the 4th of July is Litchfield's four biggest days of celebration each year. Watercade is a weekend of fun, food and competition. The events include: water fights between area fire departments, craft fair in Central park, water-ski show, Saturday evening parade and Queen Coronation ending festivities Sunday Night.
- Litchfield Parade of Bands: The Litchfield Visitors Bureau will be sponsoring the first annual Litchfield Parade of Bands event pm Tuesday, June 18, 2019. The parade contest which begins at 6:00 p.m. will feature 10 bands from around the state of Minnesota. Judging will be by the Tri-State Judging association and results announced in a ceremony following the parade. Award will be given to the top 3 in each class as well as a Grand Champion award. Best Drum Major, Drum Line, Color Guard and Winds will also receive awards. Concessions will be available throughout the parade route as well as a Pork Chop feed in one location.